



**CAPACITORS, FIXED, CHIPS, CERAMIC
DIELECTRIC, TYPES I AND II**

ESCC Generic Specification No. 3009

Issue 2	April 2015
---------	------------



LEGAL DISCLAIMER AND COPYRIGHT

European Space Agency, Copyright © 2015. All rights reserved.

The European Space Agency disclaims any liability or responsibility, to any person or entity, with respect to any loss or damage caused, or alleged to be caused, directly or indirectly by the use and application of this ESCC publication.

This publication, without the prior permission of the European Space Agency and provided that it is not used for a commercial purpose, may be:

- copied in whole, in any medium, without alteration or modification.
- copied in part, in any medium, provided that the ESCC document identification, comprising the ESCC symbol, document number and document issue, is removed.

DOCUMENTATION CHANGE NOTICE

(Refer to <https://escies.org> for ESCC DCR content)

DCR No.	CHANGE DESCRIPTION
695, 706	Specification up issued to incorporate changes per DCR. Specification converted to MSWORD. Changes in presentation are possible.

TABLE OF CONTENTS

1	INTRODUCTION	7
1.1	SCOPE	7
1.2	APPLICABILITY	7
2	APPLICABLE DOCUMENTS	7
2.1	ESCC SPECIFICATIONS	7
2.2	OTHER (REFERENCE) DOCUMENTS	8
2.3	ORDER OF PRECEDENCE	8
3	TERMS, DEFINITIONS, ABBREVIATIONS, SYMBOLS AND UNITS	8
4	REQUIREMENTS	8
4.1	GENERAL	8
4.1.1	Specifications	9
4.1.2	Conditions and Methods of Test	9
4.1.3	Manufacturer's Responsibility for Performance of Tests and Inspections	9
4.1.4	Inspection Rights	9
4.2	QUALIFICATION AND QUALIFICATION MAINTENANCE REQUIREMENTS ON A MANUFACTURER	9
4.3	DELIVERABLE COMPONENTS	9
4.3.1	ESCC Qualified Components	9
4.3.2	ESCC Components	9
4.3.3	Lot Failure	10
4.4	MARKING	10
4.5	MATERIALS AND FINISHES	10
5	PRODUCTION CONTROL	10
5.1	GENERAL	10
5.2	SPECIAL IN-PROCESS CONTROLS	11
5.2.1	Microsection Inspection	11
5.2.2	Dimension Check	11
5.2.3	Weight	11
5.2.4	Documentation	11
6	SCREENING TESTS	11
6.1	GENERAL	11
6.2	FAILURE CRITERIA	11
6.2.1	Environmental and Mechanical Test Failure	11
6.2.2	Parameter Limit Failure	11
6.2.3	Other Failures	12
6.3	FAILED COMPONENTS	12

6.4	LOT FAILURE	12
6.4.1	Lot Failure during 100% Testing	12
6.4.2	Lot Failure during Sample Testing	12
6.5	DOCUMENTATION	12
7	QUALIFICATION, QUALIFICATION MAINTENANCE AND LOT VALIDATION TESTING	12
7.1	QUALIFICATION TESTING	13
7.1.1	General	13
7.1.2	Distribution within the Qualification Test Lot	13
7.2	QUALIFICATION WITHIN A TECHNOLOGY FLOW	13
7.3	QUALIFICATION MAINTENANCE (PERIODIC TESTING)	13
7.4	LOT VALIDATION TESTING	14
7.5	FAILURE CRITERIA	14
7.5.1	Environmental and Mechanical Test Failures	14
7.5.2	Electrical Failures	14
7.5.3	Other Failures	14
7.6	FAILED COMPONENTS	14
7.7	LOT FAILURE	15
7.8	QUALIFICATION, QUALIFICATION MAINTENANCE AND LOT VALIDATION TESTING SAMPLES	15
7.9	DOCUMENTATION	15
8	TEST METHODS AND PROCEDURES	15
8.1	MICROSECTION EXAMINATION	15
8.2	STEADY STATE HUMIDITY (85/85)	16
8.3	ELECTRICAL MEASUREMENTS	16
8.3.1	General	16
8.3.1.1	Capacitance	16
8.3.1.2	Tangent of Loss Angle	16
8.3.1.3	Insulation Resistance	17
8.3.1.4	Voltage Proof	17
8.3.1.5	Temperature Coefficient	17
8.3.1.6	Temperature Characteristic	18
8.3.2	Room Temperature Electrical Measurements	18
8.3.3	High and Low Temperatures Electrical Measurements	18
8.3.4	Intermediate and End-Point Electrical Measurements	18
8.4	BURN-IN	18
8.5	EXTERNAL VISUAL INSPECTION AND DIMENSION CHECK	19
8.6	MOUNTING	19
8.7	ROBUSTNESS OF TERMINATIONS	19

8.8	RAPID CHANGE OF TEMPERATURE	19
8.9	OPERATING LIFE	20
8.10	CAPACITANCE-TEMPERATURE CHARACTERISTICS	21
8.11	SOLDERABILITY	21
8.12	PERMANENCE OF MARKING	21
9	DATA DOCUMENTATION	21
9.1	GENERAL	21
9.1.1	Qualification and Qualification Maintenance	22
9.1.2	Component Procurement and Delivery	22
9.1.3	Additional Documentation	22
9.1.4	Data Retention/Data Access	22
9.2	COVER SHEET(S)	22
9.3	LIST OF EQUIPMENT USED	22
9.4	LIST OF TEST REFERENCES	22
9.5	SPECIAL IN-PROCESS CONTROLS DATA (CHART F2)	22
9.6	SCREENING TESTS DATA (CHART F3)	23
9.7	QUALIFICATION AND PERIODIC TESTS DATA (CHART F4)	23
9.7.1	Qualification Testing	23
9.7.2	Periodic Testing for Qualification Maintenance	23
9.7.3	Lot Validation Testing	23
9.8	FAILED COMPONENTS LIST AND FAILURE ANALYSIS REPORT	23
9.9	CERTIFICATE OF CONFORMITY	23
10	DELIVERY	24
11	PACKAGING AND DISPATCH	24
12	CHARTS	25
12.1	CHART F1 – GENERAL FLOW OF PROCUREMENT	25
12.2	CHART F2 – PRODUCTION CONTROL	26
12.3	CHART F3 – SCREENING TESTS	27
12.4	CHART F4 – QUALIFICATION AND PERIODIC TESTS	28

1 INTRODUCTION

1.1 SCOPE

This specification defines the general requirements for the qualification, qualification maintenance, procurement, and delivery of fixed ceramic dielectric chip capacitors, types I and II, for space applications. This specification contains the appropriate inspection and test schedules and also specifies the data documentation requirements.

1.2 APPLICABILITY

This specification is primarily applicable to the granting of qualification approval to components qualified in accordance with one of the following ESCC methods:

- Qualification of Standard Components per ESCC Basic Specification No. 20100.
- Technology Flow Qualification per ESCC Basic Specification No. 25400.

It is also primarily applicable to the procurement of components so qualified.

This specification may also be applied to the procurement of unqualified components, recommendations for which are given in ESCC Basic Specification No. 23100.

2 APPLICABLE DOCUMENTS

The following documents form part of, and shall be read in conjunction with, this specification. The relevant issues shall be those in effect on the date of starting qualification or placing the Purchase Order.

2.1 ESCC SPECIFICATIONS

- No. 20100, Requirements for the Qualification of Standard Electronic Components for Space Application.
- No. 20400, Internal Visual Inspection.
- No. 20500, External Visual Inspection.
- No. 20600, Preservation, Packaging and Dispatch of ESCC Components.
- No. 21300, Terms, Definitions, Abbreviations, Symbols and Units.
- No. 21700, General Requirements for the Marking of ESCC Components.
- No. 22800, ESCC Non-Conformance Control System.
- No. 23100, Recommendations on the use of the ESCC Specification System for the Evaluation and Procurement of Unqualified Components.
- No. 23400, Microsection, Examination, Preparation and Evaluation of Capacitors Fixed Ceramic Leaded and Chips.
- No. 24600, Minimum Quality System Requirements.
- No. 24800, Resistance to Solvents of Marking, Materials and Finishes.
- No. 25400, Requirements for the Technology Flow Qualification of Electronic Components for Space Application

For qualification and qualification maintenance or procurement of qualified components, with the exception of ESCC Basic Specifications Nos. 20100, 21700, 22800, 24600 and 25400, where Manufacturers' specifications are equivalent to, or more stringent than, the ESCC Basic Specifications listed above, they may be used in place of the latter, subject to the approval of the ESCC Executive.

Such replacements shall be clearly identified in the applicable Process Identification Document (PID).

For procurement of unqualified components, where Manufacturers' specifications are equivalent to or more stringent than the ESCC Basic Specifications listed above, they may be used in place of the latter subject to the approval of the Orderer.

Such replacements may be listed in an appendix to the appropriate Detail Specification at the request of the Manufacturer or Orderer, subject to the approval of the ESCC Executive.

Unless otherwise stated herein, references within the text of this specification to "the Detail Specification" shall mean the relevant ESCC Detail Specification.

2.2 OTHER (REFERENCE) DOCUMENTS

- IEC Publication No. 60068 Part 2, Basic Environmental Testing Procedures.
- IEC Publication No. 60384-1 Part 1, Generic Specification for Fixed Capacitors for Use in Electronic Equipment.

2.3 ORDER OF PRECEDENCE

For the purpose of interpretation and in case of conflict with regard to documentation, the following order of precedence shall apply:

- (a) ESCC Detail Specification.
- (b) ESCC Generic Specification.
- (c) ESCC Basic Specification.
- (d) Other documents, if referenced herein.

3 TERMS, DEFINITIONS, ABBREVIATIONS, SYMBOLS AND UNITS

The terms, definitions, abbreviations, symbols and units specified in ESCC Basic Specification No. 21300 shall apply.

4 REQUIREMENTS

4.1 GENERAL

The requirements for the qualification of a component shall be in accordance with ESCC Basic Specification No. 20100.

The requirements for Technology Flow Qualification and the listing of qualified component types shall be in accordance with ESCC Basic Specification No. 25400.

The test requirements for procurement of both qualified and unqualified components (see Chart F1) shall comprise:

- Special In-Process Controls.
- Screening Tests.
- Periodic Testing (for qualified components only).
- Lot Validation Testing if stipulated in the Purchase Order.

4.1.1 Specifications

For qualification, qualification maintenance, procurement and delivery of components in conformity with this specification, the applicable specifications listed in Section 2 of this document shall apply in total unless otherwise specified herein or in the Detail Specification.

4.1.2 Conditions and Methods of Test

The conditions and methods of test shall be in accordance with this specification, the ESCC Basic Specifications referenced herein and the Detail Specification.

4.1.3 Manufacturer's Responsibility for Performance of Tests and Inspections

The Manufacturer shall be responsible for the performance of tests and inspections required by the applicable specifications. These tests and inspections shall be performed at the plant of the Manufacturer of the components unless it is agreed by the ESCC Executive (for qualification, qualification maintenance, or procurement of qualified components) or the Orderer (for procurement of unqualified components), to use an approved external facility.

4.1.4 Inspection Rights

The ESCC Executive (for qualification, qualification maintenance, or procurement of qualified components) or the Orderer (for procurement of unqualified components if stipulated in the Purchase Order) reserves the right to monitor any of the tests and inspections scheduled in the applicable specifications.

4.2 QUALIFICATION AND QUALIFICATION MAINTENANCE REQUIREMENTS ON A MANUFACTURER

To obtain and maintain the qualification of a component, or family of components, a Manufacturer shall satisfy the requirements of ESCC Basic Specification No. 20100.

To obtain and maintain the qualification of a component produced using a qualified Technology Flow, a Manufacturer shall satisfy the requirements of ESCC Basic Specification No. 25400.

4.3 DELIVERABLE COMPONENTS

4.3.1 ESCC Qualified Components

Components delivered to this specification shall be processed and inspected in accordance with the relevant Process Identification Document (PID).

4.3.2 ESCC Components

Each component, irrespective of qualification status, identified with an ESCC component number and delivered to this specification shall:

- be traceable to its production lot.
- have satisfactorily completed all the tests required by the relevant issues of the applicable specifications.
- be produced from lots that are considered by the Manufacturer to be capable of passing all applicable tests, and sequences of tests, that are defined in Chart F4. The Manufacturer shall not knowingly supply components that cannot meet this requirement. In the event that, subsequent to delivery and prior to operational use, a component is found to be in a condition such that, demonstrably, it could not have passed these tests at the time of manufacture, this shall be grounds for rejection of the delivered lot.

4.3.3 Lot Failure

Lot failure may occur during, Screening Tests (Chart F3), or Qualification and Periodic Tests (Chart F4).

Should such failure occur during qualification, qualification maintenance or procurement of qualified components the Manufacturer shall initiate the non-conformance procedure in accordance with ESCC Basic Specification No. 22800. The Manufacturer shall notify the Orderer and the ESCC Executive by any appropriate written means, within 5 working days, giving details of the number and mode of failure and the suspected cause. No further testing or analysis shall be performed on the failed components until so instructed by the ESCC Executive.

Should such failure occur during procurement of unqualified components the Manufacturer shall notify the Orderer by any appropriate written means within 5 working days, giving details of the number and mode of failure and the suspected cause. No further testing or analysis shall be performed on the failed components until so instructed by the Orderer. The Orderer shall inform the Manufacturer within 5 working days of receipt of notification what action shall be taken.

4.4 MARKING

All components procured and delivered to this specification shall be marked in accordance with ESCC Basic Specification No. 21700.

4.5 MATERIALS AND FINISHES

Specific requirements for materials and finishes are specified in the Detail Specification. Where a definite material or finish is not specified a material or finish shall be used so as to ensure that the component meets the performance requirements of this specification and the Detail Specification. Acceptance or approval of any constituent material or finish does not guarantee acceptance of the finished product.

All materials and finishes of the components specified in the Detail Specification shall comply with the restrictions on materials specified in ESCC Basic Specification No. 22600.

5 PRODUCTION CONTROL

5.1 GENERAL

Unless otherwise specified herein or in the Detail Specification all lots of components used for qualification and qualification maintenance, Lot Validation Testing and for delivery shall be subject to tests and inspections in accordance with Chart F2 in the sequence shown.

Any components which do not meet these requirements shall be removed from the lot and at no future time be resubmitted to the requirements of this specification.

The applicable test requirements are detailed in the paragraphs referenced in Chart F2.

For qualified components the full production control provisions are defined in the PID.

In the case of lot failure, the Manufacturer shall act in accordance with Para. 4.3.3.

5.2 SPECIAL IN-PROCESS CONTROLS

5.2.1 Microsection Inspection

Microsection Examination shall be performed on a sample of components from each manufacturing lot, in accordance with Para. 8.1. If the number of allowable defects is exceeded, the lot shall be rejected.

5.2.2 Dimension Check

Dimension Check shall be performed in accordance with Para. 8.5 on 3 samples only.

In the event of any failure a 100% Dimension Check shall be performed.

5.2.3 Weight

The maximum weight of the component specified in the Detail Specification shall be guaranteed but not tested.

5.2.4 Documentation

Documentation of Special In-Process Controls shall be in accordance with Para. 9.5.

6 SCREENING TESTS

6.1 GENERAL

Unless otherwise specified herein or in the Detail Specification, all lots of components used for qualification and qualification maintenance, Lot Validation Testing, and for delivery, shall be subjected to tests and inspections in accordance with Chart F3 in the sequence shown.

Any components which do not meet these requirements shall be removed from the lot and at no future time be resubmitted to the requirements of this specification.

The applicable test methods and conditions are specified in the paragraphs referenced in Chart F3.

6.2 FAILURE CRITERIA

6.2.1 Environmental and Mechanical Test Failure

The following shall be counted as component failures:

- components which fail during tests for which the pass/fail criteria are inherent in the test method, i.e. External Visual Inspection.

6.2.2 Parameter Limit Failure

A component shall be counted as a limit failure if one or more parameters exceed the limits shown in Room Temperature Electrical Measurements or High and Low Temperatures Electrical Measurements in the Detail Specification.

Any component which exhibits a limit failure prior to the submission to Burn-in shall be rejected and not counted when determining lot rejection.

6.2.3 Other Failures

A component shall be counted as a failure in any of the following cases:

- Visual failure.
- Mechanical failure.
- Handling failure.
- Lost component.

6.3 FAILED COMPONENTS

A component shall be considered as a failed component if it exhibits one or more of the failure modes described in Para. 6.2.

6.4 LOT FAILURE

In the case of lot failure, the Manufacturer shall act in accordance with Para. 4.3.3.

6.4.1 Lot Failure during 100% Testing

If the number of components failed on the basis of the failure criteria specified in Para. 6.2.2 exceeds 5% (rounded upwards to the nearest whole number) of the components submitted to Burn-in of Chart F3, the lot shall be considered as failed.

If a lot is composed of groups of components of one family defined in one ESCC Detail Specification, but separately identifiable for any reason, then the lot failure criteria shall apply separately to each identifiable group.

6.4.2 Lot Failure during Sample Testing

A lot shall be considered as failed if the number of allowable failures during sample testing as specified herein or in the Detail Specification, is exceeded.

Unless otherwise specified, if a lot failure occurs, a 100% testing may be performed but the cumulative percent defective shall not exceed that specified in Para. 6.4.1.

6.5 DOCUMENTATION

Documentation of Screening Tests shall be in accordance with Para. 9.6.

7 QUALIFICATION, QUALIFICATION MAINTENANCE AND LOT VALIDATION TESTING

The requirements of this paragraph are applicable to the tests performed on components or test structures as part of qualification or qualification maintenance in accordance with either ESCC Basic Specification No. 20100 or 25400 as applicable. They are also applicable to Lot Validation Testing as part of the procurement of qualified or unqualified components.

All components shall be serialised prior to the tests and inspections.

7.1 QUALIFICATION TESTING

7.1.1 General

Qualification testing shall be in accordance with the requirements specified in Chart F4. The tests of Chart F4 shall be performed on the specified sample, chosen at random from components which have successfully passed the tests in Chart F3. This sample constitutes the Qualification Test Lot.

The Qualification Test Lot is divided into subgroups of tests and all components assigned to a subgroup shall be subjected to all of the tests in that subgroup, in the sequence shown. The applicable test requirements are detailed in the paragraphs referenced in Chart F4.

The conditions governing qualification testing are specified in ESCC Basic Specification No. 20100.

7.1.2 Distribution within the Qualification Test Lot

Where a Detail Specification covers a range, or series of components that are considered similar, then the Qualification Test Lot shall be comprised of component types so selected that they adequately represent all of the various mechanical, structural and electrical peculiarities of that range or series.

In addition the Qualification Test Lot shall be comprised in accordance with the following provisions:

- Components with the maximum and minimum rated voltage proposed for Qualification shall be selected.
- Components with the maximum and minimum case size proposed for Qualification shall be selected. If there are more than 4 sizes an intermediate size shall also be selected.
- For each voltage/case size combination selected, the maximum capacitance and tightest tolerance proposed for Qualification shall be selected.

The component types may be specified by, but in any case shall be agreed with, the ESCC Executive, prior to the commencement of qualification testing and the justification for the selection shall be declared in the qualification test report.

7.2 QUALIFICATION WITHIN A TECHNOLOGY FLOW

The qualification of a component produced using a qualified Technology Flow shall be in accordance with ESCC Basic Specification No. 25400.

7.3 QUALIFICATION MAINTENANCE (PERIODIC TESTING)

Qualification is maintained through periodic testing and the test requirements of Para. 7.1 shall apply. For each subgroup the sample size and the period between successive subgroup testing shall be as specified in Chart F4. The conditions governing qualification maintenance are specified in ESCC Basic Specification No. 20100.

Qualification of a component, produced using a qualified Technology Flow, is maintained by the maintenance of the Technology Flow Qualification itself in accordance with ESCC Basic Specification No. 25400.

7.4 LOT VALIDATION TESTING

For procurement of qualified components, Lot Validation Testing is not required and shall only be performed if specifically stipulated in the Purchase Order.

For procurement of unqualified components the need for Lot Validation Testing shall be determined by the Orderer (ref. ESCC Basic Specification No. 23100).

When Lot Validation Testing is required, it shall consist of the performance of one or more of the tests or subgroup test sequences of Chart F4. The testing to be performed and the sample size shall be as stipulated in the Purchase Order.

When procurement of more than one component type is involved from a family, range or series, the selection of representative samples shall also be stipulated in the Purchase Order.

7.5 FAILURE CRITERIA

The following criteria shall apply to qualification, qualification maintenance and Lot Validation Testing.

7.5.1 Environmental and Mechanical Test Failures

The following shall be counted as component failures:

- Components which fail during tests for which the pass/fail criteria are inherent in the test method, e.g. Robustness of Terminations, Solderability, etc.

7.5.2 Electrical Failures

The following shall be counted as component failures:

Components which fail one or more of the applicable limits at each of the relevant data points specified for environmental, mechanical, endurance and electrical testing in Intermediate and End-Point Electrical Measurements in the Detail Specification.

7.5.3 Other Failures

A component shall be counted as a failure in any of the following cases:

- Visual failure.
- Mechanical failure.
- Handling failure.
- Lost component.

7.6 FAILED COMPONENTS

A component shall be considered as failed if it exhibits one or more of the failure modes detailed in Para. 7.5.

When requested by the ESCC Executive (for qualification, qualification maintenance or procurement of qualified components) or the Orderer (for procurement of qualified or unqualified components), failure analysis of failed components shall be performed under the responsibility of the Manufacturer and the results provided.

Failed components shall be retained at the Manufacturer's plant until the final disposition has been agreed and certified.

7.7 LOT FAILURE

For qualification and qualification maintenance, the lot shall be considered as failed if one component in any subgroup of Chart F4 is a failed component based on the criteria specified in Para. 7.5.

For procurement, the lot shall be considered as failed if one component in any test specified for Lot Validation Testing is a failed component based on the criteria specified in Para. 7.5.

In the case of lot failure, the Manufacturer shall act in accordance with Para. 4.3.3.

7.8 QUALIFICATION, QUALIFICATION MAINTENANCE AND LOT VALIDATION TESTING SAMPLES

All tests of Chart F4 are considered to be destructive and therefore components so tested shall not form part of the delivery lot.

7.9 DOCUMENTATION

Documentation of qualification, qualification maintenance and Lot Validation Testing shall be in accordance with Para. 9.7.

8 TEST METHODS AND PROCEDURES

If a Manufacturer elects to eliminate or modify a test method or procedure, the Manufacturer is still responsible for delivering components that meet all of the performance, quality and reliability requirements defined in this specification and the Detail Specification.

For a qualified component, documentation supporting the change shall be approved by the ESCC Executive and retained by the Manufacturer. It shall be copied, when requested, to the ESCC Executive. The change shall be specified in an appendix to the Detail Specification and in the PID.

For an unqualified component the change shall be approved by the Orderer. The change may be specified in an appendix to the Detail Specification at the request of the Manufacturer or Orderer, subject to the approval of the ESCC Executive.

8.1 MICROSECTION EXAMINATION

ESCC Basic Specification No. 23400.

8.2 STEADY STATE HUMIDITY (85/85)

Components mounted in accordance with Para. 8.6 shall be exposed to a temperature of $T_{amb} = +85^{\circ}\text{C}$ with 85% relative humidity for 1000 hours minimum, with a continuous bias of 1.5Vdc maximum applied across a series combination of the component under test and a 100kohm resistor.

- Data Points:
Prior to the test, Capacitance shall be measured as specified in Room Temperature Electrical Measurements in the Detail Specification.

On completion of 85/85 testing the components shall be subjected to standard atmospheric conditions for recovery for 3 to 4 hours.

After recovery, Capacitance, Change in Capacitance, Tangent of Loss Angle and Insulation Resistance shall be measured as specified in Intermediate and End-Point Electrical Measurements in the Detail Specification. Change in Capacitance shall be related to the initial measurements.

NOTE:

Unless otherwise specified, Insulation Resistance shall be measured with a measuring voltage of 1.5Vdc through a 100kohm resistor.

8.3 ELECTRICAL MEASUREMENTS

8.3.1 General

Electrical measurements and methods shall be as follows.

8.3.1.1 *Capacitance*

In accordance with IEC Publication No. 60384-1 clause 4.7. Unless otherwise specified, the following details shall apply:

- Test Conditions:
 - (a) For type I capacitors
 - Measuring frequency: 1MHz for $C \leq 1000\text{pF}$; 1kHz for $C > 1000\text{pF}$
 - Measuring voltage: $\leq 5\text{Vrms}$
 - (b) For type II capacitors
 - Measuring frequency: 1MHz for $C \leq 100\text{pF}$; 1kHz for $C > 100\text{pF}$
 - Measuring voltage: $\leq 1\text{Vrms}$
 - In order to take into account capacitance ageing, the reference age at which the component shall meet the specified capacitance tolerance shall be 1000 hours.
 - In order to de-age the component, preconditioning may be performed prior to measurement of Capacitance, at the Manufacturer's discretion. Preconditioning shall consist of exposure to $T_{amb} = +150^{\circ}\text{C}$ for a duration of 1 hour minimum followed by recovery at standard atmospheric conditions for 24 hours. Traceability of preconditioning shall be included in the data documentation.

8.3.1.2 *Tangent of Loss Angle*

In accordance with IEC Publication No. 60384-1 clause 4.8.1. Unless otherwise specified, the details applicable to Capacitance in accordance with Para. 8.3.1.1 shall apply.

8.3.1.3 *Insulation Resistance*

In accordance with IEC Publication No. 60384-1 clause 4.5, test A (Dielectric). Unless otherwise specified, the following details shall apply:

- Test Conditions:
The voltage shall be applied continuously for 1 minute while the Insulation Resistance is read. If the specified limit is met and the reading is steady or increasing, the test may be stopped before the minute has elapsed.

8.3.1.4 *Voltage Proof*

In accordance with IEC Publication No. 60384-1 clause 4.6, tests A (Dielectric). Unless otherwise specified, the following details shall apply:

- Test Conditions:
 - (a) Test voltage:
 - for Rated Voltage < 500V: 2.5x Rated Voltage (DC)
 - for Rated Voltage = 500V: 2x Rated Voltage (DC)
 - for Rated Voltage > 500V, ≤ 1250V: 1.5x Rated Voltage (DC)
 - for Rated Voltage > 1250V: 1.3x Rated Voltage (DC) (components may be immersed in an inert medium to prevent arcing or high leakage currents)
 - (b) Voltage application time: 5 ±1s
 - (c) Charging current: 0.05A maximum
 - (d) Charging circuit time constant: 1s maximum

8.3.1.5 *Temperature Coefficient*

Only applicable to type I capacitors.

Temperature Coefficient shall be measured as follows:

Components shall be maintained at each of the following temperature steps in turn until both chamber temperature and capacitance have fully stabilised:

- (a) minimum operating temperature rating ±2°C, as specified in the Detail Specification.
- (b) +20 ±2°C (reference point).
- (c) maximum operating temperature rating ±2°C, as specified in the Detail Specification.

- Data Points:
At each step, after stabilisation, Capacitance and chamber temperature shall be measured. Temperature measurement shall be accurate to within 0.5°C. The capacitance change over temperature at each step, referred to the capacitance at the reference point, shall meet the Temperature Coefficient limits specified in High and Low Temperatures Electrical Measurements in the Detail Specification.

Measurements performed during Screening Tests shall be on a go-no-go basis. Measurements performed during Qualification and Periodic Tests shall be recorded against serial number.

8.3.1.6 *Temperature Characteristic*

Only applicable to type II capacitors.

Temperature Characteristic shall be measured as follows:

Components shall be maintained at each of the following temperature steps in turn until both chamber temperature and capacitance have fully stabilised:

- (a) minimum operating temperature rating $\pm 2^{\circ}\text{C}$, as specified in the Detail Specification; no voltage applied.
- (b) $+20 \pm 2^{\circ}\text{C}$; no voltage applied (reference point).
- (c) maximum operating temperature rating $\pm 2^{\circ}\text{C}$, as specified in the Detail Specification; no voltage applied.
- (d) maximum operating temperature rating $\pm 2^{\circ}\text{C}$, as specified in the Detail Specification; Rated Voltage (DC) or 500Vdc, whichever is less, shall be applied.
- (e) $+20 \pm 2^{\circ}\text{C}$; Rated Voltage (DC) or 500Vdc, whichever is less, shall be applied.
- (f) minimum operating temperature rating $\pm 2^{\circ}\text{C}$, as specified in the Detail Specification; Rated Voltage (DC) or 500Vdc, whichever is less, shall be applied.

- **Data Points:**

At each step, after stabilisation, Capacitance and chamber temperature shall be measured. Temperature measurement shall be accurate to within 0.5°C . The capacitance change over temperature at each step, referred to the capacitance at the reference point, shall meet the Temperature Characteristic limits specified in High and Low Temperatures Electrical Measurements in the Detail Specification.

Measurements performed during Screening Tests shall be on a go-no-go basis. Measurements performed during Qualification and Periodic Tests shall be recorded against serial number.

8.3.2 Room Temperature Electrical Measurements

Room Temperature Electrical Measurements shall be performed as specified in the Detail Specification.

8.3.3 High and Low Temperatures Electrical Measurements

High and Low Temperatures Electrical Measurements shall be performed as specified in the Detail Specification. Unless otherwise specified, measurements shall be performed on a sample of 5 components from each manufacturing lot with 0 failures allowed. In the event of any failure a 100% inspection may be performed.

8.3.4 Intermediate and End-Point Electrical Measurements

At each of the relevant data points during Qualification and Periodic Tests, Intermediate and End-Point Electrical Measurements shall be performed as specified in the Detail Specification. All values obtained shall be recorded against serial numbers and the parameter drift calculated if specified.

8.4 BURN-IN

Components shall be subjected to an endurance test in accordance with IEC Publication No. 60384-1 clause 4.23. Unless otherwise specified, the following details shall apply:

- **Test Conditions:**
 - (a) Duration: 96 hours minimum.
 - (b) Temperature: maximum operating temperature rating $(+0 -5)^{\circ}\text{C}$, as specified in the Detail Specification.

(c) Applied Voltage:

- for Rated Voltage < 500V: 2x Rated Voltage (DC)
- for Rated Voltage = 500V: 1.5x Rated Voltage (DC)
- for Rated Voltage > 500V, ≤ 1250V: 1.3x Rated Voltage (DC)
- for Rated Voltage > 1250V: 1x Rated Voltage (DC) (components may be immersed in an inert medium to prevent arcing or high leakage currents)

8.5 EXTERNAL VISUAL INSPECTION AND DIMENSION CHECK

External Visual Inspection shall be performed in accordance with ESCC Basic Specification Nos. 20400 and 20500.

Dimension Check shall be performed in accordance with ESCC Basic Specification No. 20500.

8.6 MOUNTING

Components shall be mounted on a suitable substrate in accordance with IEC Publication No. 60384-1, Clause 4.33:

- Data Points:
After mounting, components shall be visually examined. There shall be no evidence of damage. Terminations and substrate shall be inspected for good wetting.

Capacitance, Tangent of Loss Angle and Insulation Resistance shall be measured as specified in Intermediate and End-Point Electrical Measurements in the Detail Specification.

8.7 ROBUSTNESS OF TERMINATIONS

Components mounted in accordance with Para. 8.6 shall be subjected to a shear (adhesion) test in accordance with IEC Publication No. 60384-1, clause 4.34. Unless otherwise specified, the following details shall apply:

- Test Conditions:
A force of 5N shall be applied normal to the line joining the terminations and in a plane parallel to the substrate. The force shall be applied progressively (without any shock) and then maintained for a period of 10 ±1s.
- Data Points:
On completion of testing components shall be visually examined. There shall be no evidence of damage, cracking, lifting or dry solder joints.

Capacitance shall be measured as specified in Intermediate and End-Point Electrical Measurements in the Detail Specification.

8.8 RAPID CHANGE OF TEMPERATURE

Components mounted in accordance with Para. 8.6 shall be subjected to Test Na of IEC Publication No. 60068-2-14. The following details shall apply:

- Test Conditions:
 - (a) Low temperature: minimum storage temperature rating as specified in the Detail Specification.
 - (b) High temperature: maximum storage temperature rating as specified in the Detail Specification.
 - (c) Number of cycles: 10
 - (d) Exposure time (each cycle, each temperature): 30 minutes
 - (e) Transition time: 1 minute

- Data Points:
Prior to the test, Capacitance shall be measured as specified in Intermediate and End-Point Electrical Measurements in the Detail Specification.

On completion of testing the components shall be subjected to standard atmospheric conditions for recovery for 24 ±2 hours.

After recovery, the components shall be visually examined. There shall be no evidence of damage. Capacitance, Change in Capacitance and Tangent of Loss Angle shall be measured as specified in Intermediate and End-Point Electrical Measurements in the Detail Specification. Change in Capacitance shall be related to the initial measurements.

8.9 OPERATING LIFE

Components mounted in accordance with Para. 8.6 shall be subjected to an endurance test in accordance with IEC Publication No. 60384-1 clause 4.23. Unless otherwise specified, the following details shall apply:

- Test Conditions:
 - (a) Duration:
 - 2000 ±48 hours; applicable to Qualification Testing, and to Periodic Testing for renewal of qualification after lapse.
 - 1000 ±24 hours; applicable to Periodic Testing for extension of qualification.
 - (b) Temperature: maximum operating temperature rating (+0 -5)°C, as specified in the Detail Specification.
 - (c) Applied Voltage:
 - for Rated Voltage < 500V: 2x Rated Voltage (DC)
 - for Rated Voltage = 500V: 1.5x Rated Voltage (DC)
 - for Rated Voltage > 500V, ≤ 1250V: 1.3x Rated Voltage (DC)
 - for Rated Voltage > 1250V: 1x Rated Voltage (DC) (components may be immersed in an inert medium to prevent arcing or high leakage currents)
- Data Points:
Prior to the test, Capacitance shall be measured (initial measurements) as specified in Intermediate and End-Point Electrical Measurements in the Detail Specification.

For a 2000 hour Operating Life test, at the Manufacturer's discretion, testing may be stopped after 1000 ±48 hours for optional intermediate measurements. The components shall be subjected to standard atmospheric conditions for recovery (1 hour minimum for type I capacitors; 24 ±2 hours for type II capacitors). After recovery, Capacitance, Change in Capacitance and Insulation Resistance shall be measured as specified in Intermediate and End-Point Electrical Measurements in the Detail Specification. Change in Capacitance shall be related to the initial measurements. On completion of intermediate electrical measurements, components shall be returned to Operating Life testing.

On completion of testing (1000 **or** 2000 hours), the components shall be subjected to standard atmospheric conditions for recovery for 24 ±2 hours.

After recovery, the components shall be visually examined. There shall be no evidence of damage. Capacitance, Change in Capacitance, Tangent of Loss Angle, Insulation Resistance and Voltage Proof shall be measured as specified in Intermediate and End-Point Electrical Measurements in the Detail Specification. Change in Capacitance shall be related to the initial measurements.

8.10 CAPACITANCE-TEMPERATURE CHARACTERISTICS

The capacitance-temperature characteristics of the components mounted in accordance with Para. 8.6 shall be measured as specified in Intermediate and End-Point Electrical Measurements in the Detail Specification. The following details shall apply:

- Test Conditions:
 - (a) For type I capacitors: Temperature Coefficient in accordance with Para. 8.3.1.5.
 - (b) For type II capacitors: Temperature Characteristic in accordance with Para. 8.3.1.6.

8.11 SOLDERABILITY

The components shall be subjected to Test T_d of IEC Publication No. 60068-2-58. Unless otherwise specified, the following details shall apply:

- Test Conditions:

Solder bath test method (+235 ±5°C) shall apply. The components shall be fully immersed for 5 ±0.5s.
- Final Inspection:

On completion of testing the components shall be visually examined. There shall be no evidence of damage. At least 75% of the terminations shall be covered by a smooth solder covering. The remaining 25% may contain small pin-holes or rough spots but these shall not be concentrated in one area.

8.12 PERMANENCE OF MARKING

ESCC Basic Specification No. 24800.

9 DATA DOCUMENTATION

9.1 GENERAL

For the qualification, qualification maintenance and procurement for each lot a data documentation package shall exist in a printed or electronic form.

This package shall be compiled from:

- (a) Cover sheet (or sheets).
- (b) List of equipment (testing and measuring).
- (c) List of test references.
- (d) Special In-Process Controls data (Chart F2),
- (e) Screening Tests data (Chart F3).
- (f) Qualification and Periodic Tests data including Lot Validation Testing data (when applicable) (Chart F4).
- (g) Failed components list and failure analysis report (when applicable).
- (h) Certificate of Conformity.

Items (a) to (h) inclusive shall be grouped, preferably as sub-packages and, for identification purposes, each page shall include the following information:

- ESCC Component Number.
- Manufacturer's name.
- Lot identification.
- Date of establishment of the document.
- Page number.

Whenever possible, documentation should preferably be available in electronic format suitable for reading using a compatible PC. The format supplied shall be legible, durable and indexed. The preferred storage medium is CD-ROM and the preferred file format is PDF.

9.1.1 Qualification and Qualification Maintenance

In the case of qualification or qualification maintenance, the items listed in Para. 9.1(a) to (h) are required.

9.1.2 Component Procurement and Delivery

For all deliveries of components procured to this specification, the following documentation shall be supplied:

- (a) Cover sheet (if all of the information is not included on the Certificate of Conformity).
- (b) Certificate of Conformity.

9.1.3 Additional Documentation

The Manufacturer shall deliver additional documentation containing data and reports to the Orderer, if stipulated in the Purchase Order.

9.1.4 Data Retention/Data Access

If not delivered, all data shall be retained by the Manufacturer for a minimum of 5 years during which time it shall be available for review, if requested, by the Orderer or the ESCC Executive (for qualified components).

9.2 COVER SHEET(S)

The cover sheet(s) of the data documentation package shall include as a minimum:

- (a) Reference to the Detail Specification, including issue and date.
- (b) Reference to the applicable ESCC Generic Specification, including issue and date.
- (c) ESCC Component Number and the Manufacturer's part type number.
- (d) Lot identification.
- (e) Number of the Purchase Order.
- (f) Information relative to any additions to this specification and/or the Detail Specification.
- (g) Manufacturer's name and address.
- (h) Location of the manufacturing plant.
- (i) Signature on behalf of Manufacturer.
- (j) Total number of pages of the data package.

9.3 LIST OF EQUIPMENT USED

A list of equipment used for tests and measurements shall be prepared. Where applicable, this list shall contain inventory number, Manufacturer's type number, serial number, etc. This list shall indicate for which tests such equipment was used.

9.4 LIST OF TEST REFERENCES

This list shall include all Manufacturer's references or codes which are necessary to correlate the test data provided with the applicable tests specified in the tables of the Detail Specification.

9.5 SPECIAL IN-PROCESS CONTROLS DATA (CHART F2)

A test result summary shall be compiled showing the total number of components submitted to, and the total number rejected after each of the tests. For Microsection Inspection, an examination report that includes photographs shall be prepared.

9.6 SCREENING TESTS DATA (CHART F3)

A test result summary shall be compiled showing the total number of components submitted to and the total number rejected after each of the tests.

9.7 QUALIFICATION AND PERIODIC TESTS DATA (CHART F4)

9.7.1 Qualification Testing

A test result summary shall be compiled showing the components submitted to, and the number rejected after each test in each subgroup. Component serial numbers for each subgroup shall be identified. For each test requiring electrical measurements the results shall be recorded against component serial number. Where a drift value is specified during a test the drift calculation shall be recorded against component serial number.

9.7.2 Periodic Testing for Qualification Maintenance

A test result summary shall be compiled showing the components submitted to and the number rejected after each test in each subgroup. Component serial numbers for each subgroup shall be identified. For each test requiring electrical measurements the results shall be recorded against component serial number. Where a drift value is specified during a test the drift calculation shall be recorded against component serial number.

In addition to the full test data a report shall be compiled for each subgroup of Chart F4 to act as the most recent Periodic Testing summary. These reports shall include a list of all tests performed in each subgroup, the ESCC Component Numbers and quantities of components tested, a statement confirming all the results were satisfactory, the date the tests were performed and a reference to the full test data.

9.7.3 Lot Validation Testing

A test result summary shall be compiled showing the components submitted to and the number rejected after each test in each subgroup (as applicable). Component serial numbers for each subgroup shall be identified. For each test requiring electrical measurements the results shall be recorded against component serial number. Where a drift value is specified during a test the drift calculation shall be recorded against component serial number.

9.8 FAILED COMPONENTS LIST AND FAILURE ANALYSIS REPORT

The failed components list and failure analysis report shall provide full details of:

- (a) The reference and description of the test or measurement performed as defined in this specification and/or the Detail Specification during Special In-Process Controls, Screening Tests and Qualification and Periodic Tests.
- (b) Traceability information including serial number (if applicable) of the failed component.
- (c) The failed parameter and the failure mode of the component.
- (d) Detailed failure analysis (if requested by the ESCC Executive or Orderer).

9.9 CERTIFICATE OF CONFORMITY

A Certificate of Conformity shall be established in accordance with the requirements of ESCC Basic Specification Nos. 20100 or 25400.

10 **DELIVERY**

For procurement, for each order, the items forming the delivery are:

- (a) The delivery lot.
- (b) The components used for Lot Validation Testing (as applicable), but not forming part of the delivery lot, if stipulated in the Purchase Order.
- (c) The relevant documentation in accordance with the requirements of Paras. 9.1.2 and 9.1.3.

In the case of a component for which a valid qualification is in force, all data of all components submitted to Lot Validation Testing shall also be copied, when requested, to the ESCC Executive.

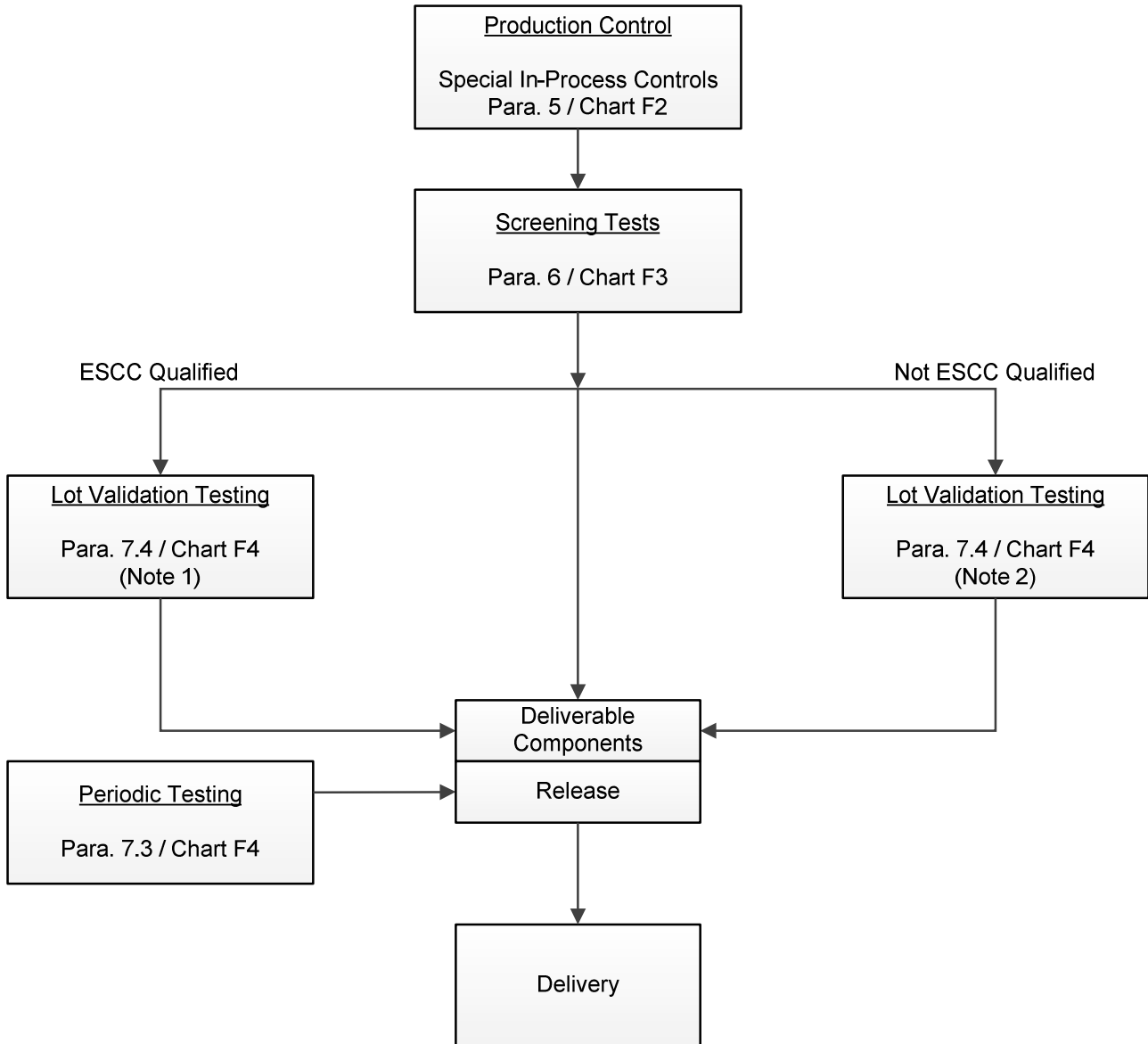
For qualification or qualification maintenance, the disposition of the Qualification Test Lot and its related documentation shall be as specified in ESCC Basic Specification Nos. 20100 or 25400 and the relevant paragraphs of Section 9 of this specification.

11 **PACKAGING AND DISPATCH**

The packaging and dispatch of components to this specification shall be in accordance with the requirements of ESCC Basic Specification No. 20600.

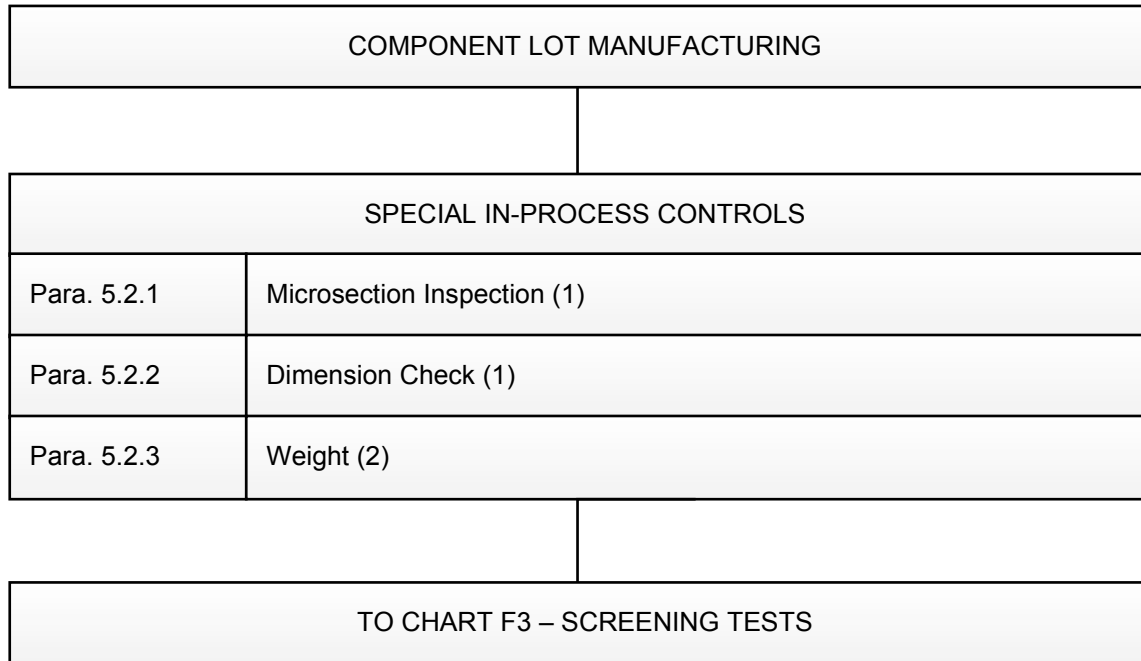
12 CHARTS

12.1 CHART F1 – GENERAL FLOW OF PROCUREMENT



NOTES:

1. Lot Validation Testing is not required for qualified components unless specifically stipulated in the Purchase Order.
2. For unqualified components, the need for Lot Validation Testing shall be determined by the Orderer and the required testing shall be as stipulated in the Purchase Order (ref. ESCC Basic Specification No. 23100).

12.2 CHART F2 – PRODUCTION CONTROL**NOTES:**

1. Performed on a sample basis.
2. Guaranteed but not tested.

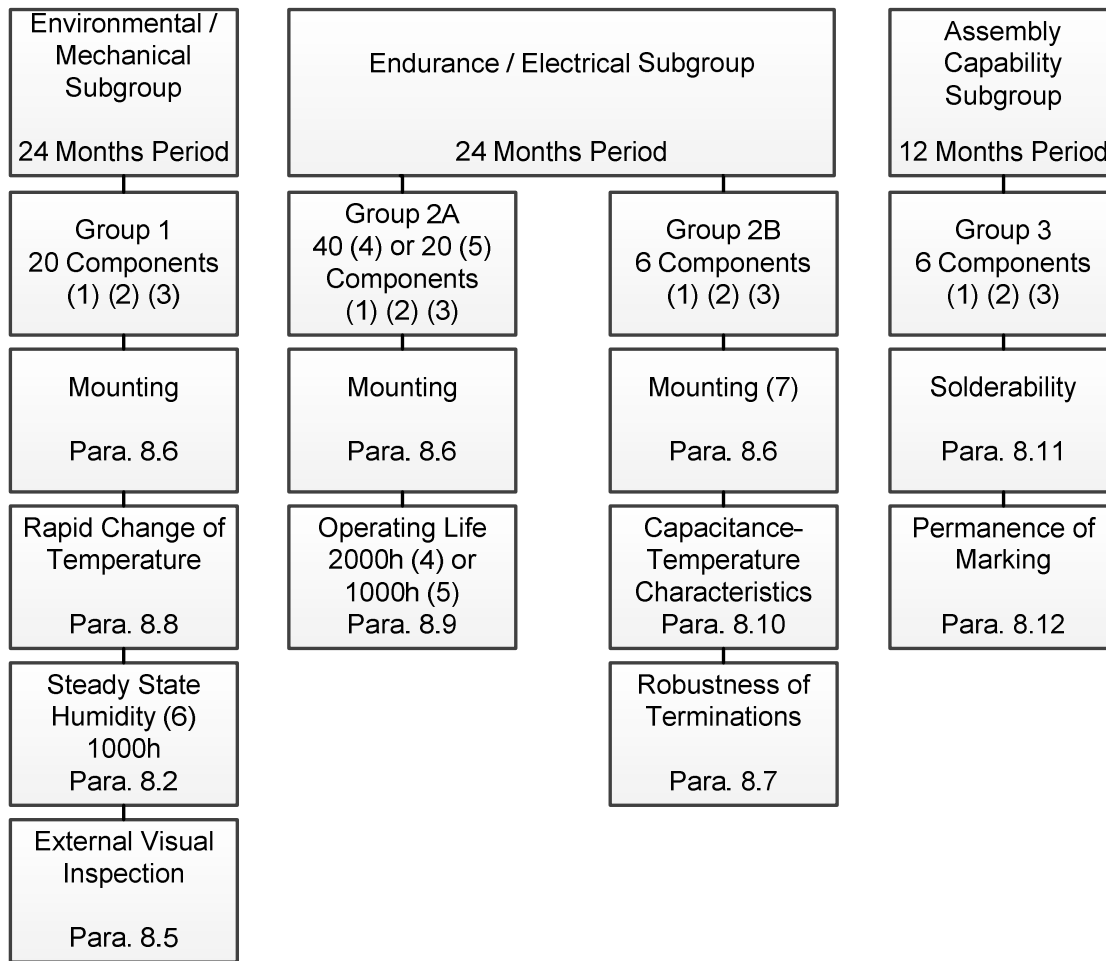
12.3 CHART F3 – SCREENING TESTS

COMPONENTS FROM PRODUCTION CONTROL	
Para. 8.3.2	Room Temperature Electrical Measurements (1)
Para. 8.4	Burn-in
Para. 8.3.2	Room Temperature Electrical Measurements (2)
Para. 8.3.3	High and Low Temperatures Electrical Measurements (2) (3)
Para. 6.4	Check For Lot Failure (4)
Para. 8.5	External Visual Inspection
TO CHART F4 WHEN APPLICABLE	

NOTES:

1. Optional at the Manufacturer's discretion.
2. The lot failure criteria of Para. 6.4 apply to this test.
3. Performed on a sample basis.
4. Check for Lot Failure shall take into account all electrical parameter failures that may occur during Screening Tests in accordance with para. 8.3.2 and 8.3.3 subsequent to Burn-in.

12.4 CHART F4 – QUALIFICATION AND PERIODIC TESTS



NOTES:

1. For distribution within the subgroups, see Para. 7.1.2 for qualification and qualification maintenance, and Para. 7.4 for Lot Validation Testing. The minimum quantity of components per test vehicle must be :
 - Group 1: 20 components
 - Group 2A: 10 components
 - Group 2B: 3 components
 - Group 3: 3 components
2. All components shall be serialised prior to testing.
3. No failures are permitted.
4. Applicable to Qualification Testing, and to Periodic Testing for renewal of qualification after lapse.
5. Applicable to Periodic Testing for extension of qualification.
6. Not applicable to capacitors with Rated Voltage $\geq 500V$
7. Mounting may be performed before or after Capacitance-Temperature Characteristics.