




Pages 1 to 15

CONTACTS, ELECTRICAL, CRIMP
FOR 3401/044 CONNECTORS
ESCC Detail Specification No. 3401/045

ISSUE 2
September 2009



Document Custodian: European Space Agency - see <https://escies.org>

	ESCC Detail Specification No. 3401/045		PAGE i ISSUE 2
--	---	--	-------------------

LEGAL DISCLAIMER AND COPYRIGHT

European Space Agency, Copyright © 2009. All rights reserved.

The European Space Agency disclaims any liability or responsibility, to any person or entity, with respect to any loss or damage caused, or alleged to be caused, directly or indirectly by the use and application of this ESCC publication.

This publication, without the prior permission of the European Space Agency and provided that it is not used for a commercial purpose, may be:

- copied in whole in any medium without alteration or modification.
- copied in part, in any medium, provided that the ESCC document identification, comprising the ESCC symbol, document number and document issue, is removed.



ESCC Detail Specification
No. 3401/045

PAGE 2

ISSUE 2

DOCUMENTATION CHANGE NOTICE

(Refer to <https://escies.org> for ESCC DCR content)

DCR No.	CHANGE DESCRIPTION
435	Specification upissued to incorporate technical and editorial changes per DCR.

TABLE OF CONTENTS

		<u>Page</u>
1.	<u>GENERAL</u>	5
1.1	Scope	5
1.2	Component Type Variants	5
1.3	Maximum Ratings	5
1.4	Parameter Derating Information	5
1.5	Physical Dimensions	5
2.	<u>APPLICABLE DOCUMENTS</u>	7
3.	<u>TERMS, DEFINITIONS, ABBREVIATIONS, SYMBOLS AND UNITS</u>	7
4.	<u>REQUIREMENTS</u>	7
4.1	General	7
4.2	Deviations from Generic Specification	10
4.2.1	Deviations from Special In-process Controls	10
4.2.2	Deviations from Final Production Tests	10
4.2.3	Deviations from Burn-in and Electrical Measurements	10
4.2.4	Deviations from Qualification Tests	10
4.2.5	Deviations from Lot Acceptance Tests	10
4.3	Mechanical Requirements	10
4.3.1	Dimension Check	10
4.3.2	Weight	10
4.3.3	Contact Capability	10
4.3.4	Contact Retention	10
4.3.5	Mating and Unmating Forces	10
4.3.6	Insert Retention	10
4.3.7	Jackscrew Retention	10
4.3.8	Contact Insertion and Withdrawal Forces	11
4.3.9	Engagement and Separation Forces	11
4.3.10	Oversize Pin Exclusion	11
4.3.11	Probe Damage	11
4.4	Materials and Finishes	11
4.4.1	Shell, Coupling Ring and Nuts	11
4.4.2	Inserts	11
4.4.3	Contacts	11
4.4.4	Contact Retaining Clip	11
4.4.5	Guiding and Locking Devices	11
4.4.6	Magnetism Level	11
4.5	Marking	12
4.5.1	General	12
4.5.2	The ESCC Component Number	12
4.5.3	Traceability Information	12
4.6	Electrical Measurements	12
4.6.1	Electrical Measurements at Room Temperature	12
4.6.2	Electrical Measurements at High and Low Temperatures	12
4.6.3	Circuits for Electrical Measurements	12
4.7	Burn-in Tests	12
4.8	Environmental and Endurance Tests	14
4.8.1	Measurements and Inspections on Completion of Environmental Tests	14
4.8.2	Measurements and Inspections at Intermediate Points during Endurance Tests	14
4.8.3	Measurements and Inspections on Completion of Endurance Tests	14
4.8.4	Conditions for Operating Life Test	14
4.8.5	Electrical Circuits for Operating Life Test	14
4.8.6	Conditions for High Temperature Storage Test	14



TABLES

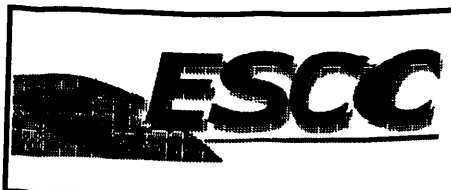
	<u>Page</u>
1(a) Type Variants	6
1(b) Maximum Ratings	7
2 Electrical Measurements at Room Temperature	13
3 Not applicable	N/A
4 Not applicable	N/A
5 Not applicable	N/A
6 Measurements and Inspections on Completion of Environmental and Endurance Tests	14

FIGURES

1 Parameter Derating Information	N/A
2 Physical Dimensions	
- Variants with Uneven Numbers - Male Contact	8
- Variants with Even Numbers - Female Contact	9

APPENDICES (Applicable to specific Manufacturers only)

None.



1. GENERAL

1.1 SCOPE

This specification details the ratings, physical and electrical characteristics, test and inspection data for Contacts, Electrical, Crimp, Gauge 22, 20, 16, 12, for 3401/044 Connectors.

These contacts shall be packed separately from the connectors and may be procured either with the connectors or separately.

This specification shall be read in conjunction with:

- ESCC Generic Specification No. 3401, Connectors, Electrical, Non-Filtered, Circular and Rectangular,
- ESCC Detail Specification No. 3401/044, Connectors, Electrical, Circular, Bayonet Coupling, Removable Crimp Contacts, Based on MIL-C-38999 Series II.

the requirements of which are supplemented herein.

1.2 COMPONENT TYPE VARIANTS

Variants of the different sizes of contacts specified herein, which are also covered by this specification are scheduled in Table 1(a).

1.3 MAXIMUM RATINGS

The maximum ratings, which shall not be exceeded at any time during use or storage, applicable to the contacts specified herein, are scheduled in Table 1(b).

1.4 PARAMETER DERATING INFORMATION (FIGURE 1)

Not applicable.

1.5 PHYSICAL DIMENSIONS

The physical dimensions of the contacts specified herein are shown in Figure 2.



ESCC Detail Specification

No. 3401/045

PAGE 6

ISSUE 2

TABLE 1(a) - TYPE VARIANTS

VAR- IANT	TYPE	MATING END SIZE	CRIMP BARREL SIZE	RATED CUR- RENT	ACCEPT WIRE AWG	MAX WEIGHT g	ENGAGEMENT & SEPARATION		TEST PIN			CONTACT CAPABILITY			CON- TACT RETENT. FORCE MAX N	CON- TACT INSERT WITHDR. FORCES MAX N	PROBE DAMAGE		OVERSIZE PIN EXCL.	
							ENGAG. max N (1)	SEPAR. min N (1)	DIA mm		Pick-up g (2)	Drop g (3)	MO- MENT N.cm	PROBE DIA mm			FORCE MAX N	TEST PIN DIA mm		
									min	max				min				max	min	max
01	Male	22	22	5.0	22 24	0.08	-	-	-	-	-	-	-	44	44	-	-	-	-	
02	Female				26	0.11	3.33 2.22	0.19 0.19	0.773 0.749	- 19.84	340.2 -	44	44	1.34	0.749	0.774	2.45	0.905	0.907	
03	Male	20	20	7.5	20 22 24	0.16	-	-	-	-	-	67	89	-	-	-	-	-	-	
04	Female				16 18 20	0.21	5.01 2.22	0.19 0.19	1.039 0.990	- 19.84	510.3 -	67	89	5.64	1.003	1.029	3.33	1.180	1.182	
05	Male	16	16	13	16 18 20	0.33	-	-	-	-	-	111	89	-	-	-	-	-	-	
06	Female				12 14	0.42	8.34 3.50	0.56 0.56	1.611 1.562	56.71	850.5	111	89	22.56	1.575	1.60	5.49	1.738	1.740	
07	Male	12	12	23	12 14	0.68	-	-	-	-	-	111	133	-	-	-	-	-	-	
08	Female					0.82	8.34 6.34	0.83 0.83	2.411 2.362	85.05	850.5	111	133	22.56	2.375	2.40	8.24	2.550	2.552	

NOTES

- 1st line with maximum diameter test pin; 2nd line with minimum diameter test pin.
- With minimum diameter test pin and minimum insertion depth of 4mm.
- With maximum diameter test pin and minimum insertion depth of 4mm.

TABLE 1(b) - MAXIMUM RATINGS

NO.	CHARACTERISTICS	SYMBOL	MAXIMUM RATINGS	UNITS
1	Rated current	I_{CR}	See Table 1(a)	A
2	Operating Temperature Range	T_{op}	-65 to +200	°C
3	Storage Temperature Range	T_{stg}	-65 to +200	°C

FIGURE 1 - PARAMETER DERATING INFORMATION

Not applicable.

2. APPLICABLE DOCUMENTS

The following documents form part of this specification and shall be read in conjunction with it:-

- (a) ESCC Generic Specification No. 3401, Connectors, Electrical, Non-Filtered, Circular and Rectangular.
- (b) ESCC Detail Specification No. 3401/044, Connectors, Electrical, Circular, Bayonet Coupling, Scoop-proof, Removable Crimp Contacts, Based on MIL-C-38999 Series II.

3. TERMS, DEFINITIONS, ABBREVIATIONS, SYMBOLS AND UNITS

For the purpose of this specification, the terms, definitions, abbreviations, symbols and units specified in ESCC Basic Specification No. 21300 shall apply.

4. REQUIREMENTS

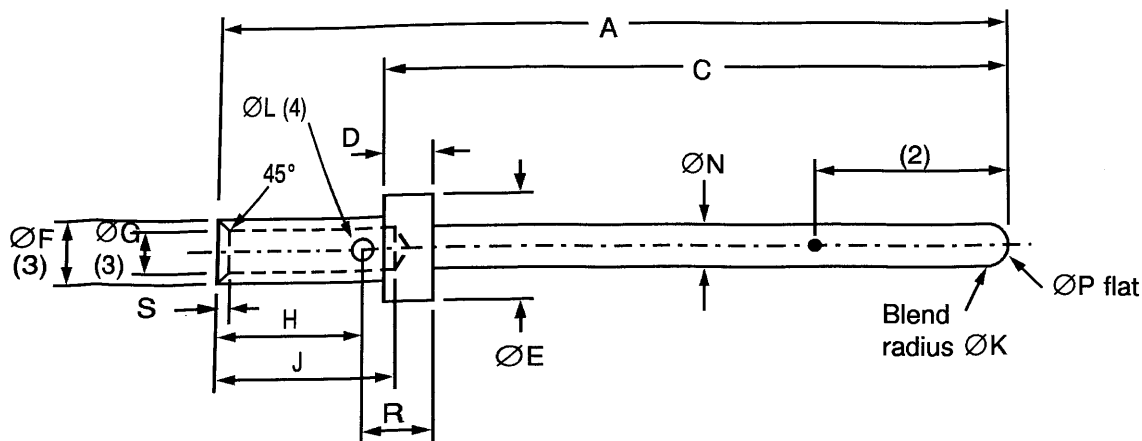
4.1 GENERAL

The complete requirements for procurement of the contacts specified herein are stated in this specification and ESCC Generic Specification No. 3401. Deviations from the Generic Specification applicable to this specification only, are listed in Para 4.2.

Deviations from the applicable Generic Specification and this Detail Specification, formally agreed with specific Manufacturers on the basis that the alternative requirements are equivalent to the ESCC requirements and do not affect the components' reliability, are listed in the Appendices attached to this specification.

FIGURE 2 - PHYSICAL DIMENSIONS

VARIANTS WITH UNEVEN NUMBERS - MALE CONTACT



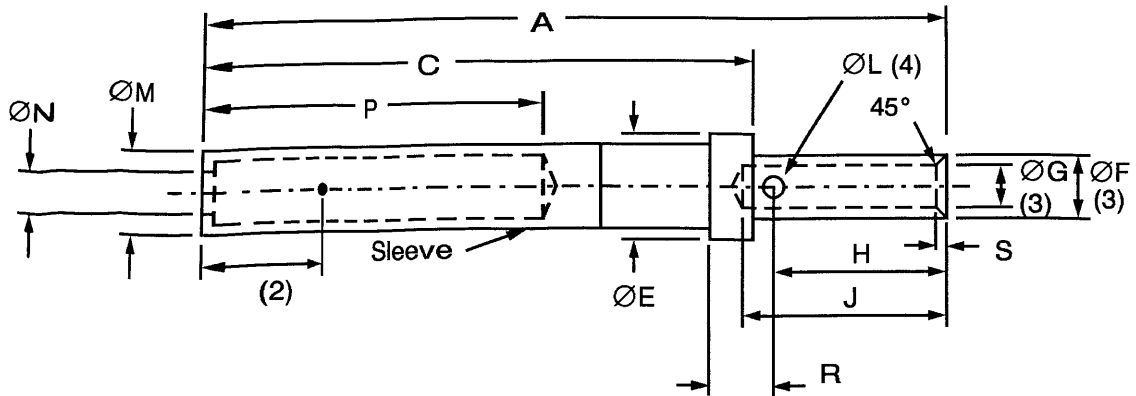
Type Variant		A	C	D	ØE	ØF	ØG	H	J	ØK	ØL	ØN	ØP	R	S
01	Min	-	7.49	0.74	1.52	1.17	0.85	3.09	3.58	0.25	0.46	0.75	-	-	0.08
	Max	13.64	7.62	0.84	1.57	1.22	0.90	3.27	3.99	0.51	0.56	0.77	0.20	-	0.13
03	Min	-	7.49	0.74	2.31	1.73	1.17	-	5.31	0.38	0.66	0.99	-	1.82	0.13
	Max	13.64	7.62	0.84	2.39	1.78	1.22	-	5.82	0.64	0.81	1.04	0.38	1.98	0.25
05	Min	-	7.49	0.74	3.23	2.57	1.68	-	5.31	0.51	0.91	1.56	0.28	2.08	0.13
	Max	13.64	7.62	0.84	3.30	2.62	1.73	-	5.82	0.64	1.02	1.61	0.76	2.24	0.25
07	Min	-	7.49	0.74	4.55	3.76	2.49	-	5.31	0.51	0.91	2.36	1.09	2.08	0.13
	Max	13.64	7.62	0.84	4.62	3.84	2.59	-	5.82	0.64	1.07	2.41	1.57	2.24	0.25

NOTES

1. All dimensions are in millimetres.
2. Measurement point for plating thickness: 4.0 ± 1.0 .
3. ØF and ØG to be concentric within 0.05 TIR.
4. Inspection hole shall only penetrate one wall of the crimp barrel.

FIGURE 2 - PHYSICAL DIMENSIONS (CONTINUED)


VARIANTS WITH EVEN NUMBERS - FEMALE CONTACT



Type Variant		A	C	ØE	ØF	ØG	H	J	ØL	ØM	ØN	P	R	S
02	Min	-	7.08	1.52	1.17	0.85	3.09	3.58	0.46	-	0.78	4.22	-	0.08
	Max	13.41	7.34	1.57	1.22	0.90	3.27	3.99	0.56	1.57	-	-	-	0.13
04	Min	-	7.08	2.31	1.73	1.17	-	5.31	0.66	-	1.05	4.22	1.82	0.13
	Max	13.41	7.34	2.39	1.78	1.22	-	5.82	0.81	1.98	-	-	1.98	0.25
06	Min	-	7.08	3.23	2.57	1.68	-	5.31	0.91	-	1.63	4.22	2.08	0.13
	Max	13.41	7.34	3.30	2.62	1.73	-	5.82	1.02	2.87	-	-	2.24	0.25
08	Min	-	7.08	4.55	3.76	2.49	-	5.31	0.91	-	2.42	4.22	2.08	0.13
	Max	13.41	7.34	4.62	3.84	2.59	-	5.82	1.07	4.09	-	-	2.24	0.25

NOTES

1. All dimensions are in millimetres.
2. Measurement point for plating thickness: 2.0 ± 1.0 .
3. ØF and ØG to be concentric within 0.05 TIR.
4. Inspection hole shall only penetrate one wall of the crimp barrel.

	<p style="text-align: center;">ESCC Detail Specification No. 3401/045</p>	<p>PAGE 10 ISSUE 2</p>
---	---	----------------------------

4.2 DEVIATIONS FROM GENERIC SPECIFICATION

4.2.1 Deviations from Special In-process Controls

None.

4.2.2 Deviations from Final Production Tests (Chart II)

None.

4.2.3 Deviations from Burn-in and Electrical Measurements (Chart III)

Not applicable.

4.2.4 Deviations from Qualification Tests (Chart IV)

(a) Para. 9.31, Solderability: Not applicable.

4.2.5 Deviations from Lot Acceptance Tests (Chart V)

(a) Para. 9.31, Solderability: Not applicable.

4.3 MECHANICAL REQUIREMENTS

4.3.1 Dimension Check

The dimensions of the contacts specified herein shall be verified in accordance with the requirements set out in Para 9.6 of ESCC Generic Specification No. 3401 and shall conform to those shown in Figure 2 of this specification.

4.3.2 Weight

The maximum weight of the contacts specified herein shall be as specified in Table 1(a).

4.3.3 Contact Capability

For the purpose of this test, the pick-up and drop weights shall be as specified in Table 1(a).

4.3.4 Contact Retention (in insert)

The contact retention force shall be as specified in Table 1(a).

4.3.5 Mating and Unmating Forces

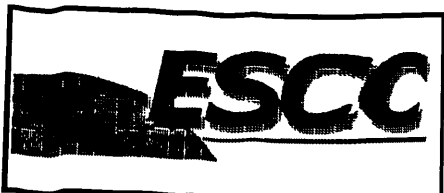
As specified in ESCC Detail Specification No. 3401/044.

4.3.6 Insert Retention (In Shell)

As specified in ESCC Detail Specification No. 3401/044.

4.3.7 Jackscrew Retention

As specified in ESCC Detail Specification No. 3401/044.



4.3.8 Contact Insertion and Withdrawal Forces

The contact insertion and withdrawal forces shall be as specified in Table 1(a).

4.3.9 Engagement and Separation Forces

The diameter of the test pin and the contact engagement and separation forces of the female contacts shall be as specified in Table 1(a).

4.3.10 Oversize Pin Exclusion

The diameter of the test pin and the force applied to it shall be as specified in Table 1(a).

4.3.11 Probe Damage

The probe diameter and the moment at the end of the probe shall be as specified in Table 1(a).

4.4 MATERIALS AND FINISHES

The materials and finishes shall be as specified herein. Where a definite material is not specified, a material which will enable the connectors specified herein to meet the performance requirements of this specification shall be used. Acceptance or approval of any constituent material does not guarantee acceptance of the finished product.

4.4.1 Shell, Coupling Ring and Nuts

As specified in ESCC Detail Specification No. 3401/044.

4.4.2 Inserts

As specified in ESCC Detail Specification No. 3401/044.

4.4.3 Contacts

The contact body shall be made of copper base alloy selected from raw materials with a minimum of impurities. It shall be plated as follows:-

- 1 μ m minimum nickel underplate.
- 1.27 μ m minimum gold plate.

4.4.4 Contact Retaining Clip

As specified in ESCC Detail Specification No. 3401/044.

4.4.5 Guiding and Locking Devices

Not applicable.

4.4.6 Magnetism Level

As specified in ESCC Detail Specification No. 3401/044.

4.5 MARKING

4.5.1 General

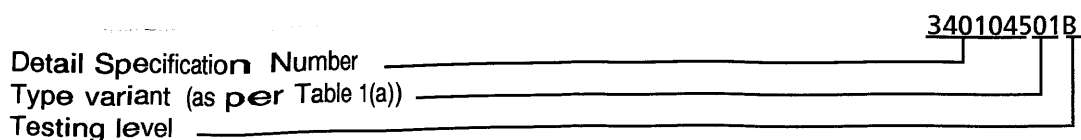
The marking of all components delivered to this specification shall be in accordance with the requirements of ESCC Basic Specification No. 21700 and the following paragraphs.

These components being too small to accommodate the marking as specified hereafter, the full marking information shall accompany each lot of components in its primary package. Such marking shall comprise:-

- (a) The ESCC Component Number.
- (b) Traceability information.

4.5.2 The ESCC Component Number

The ESCC component number shall be constituted and marked as follows:-



4.5.3 Traceability Information

Traceability information shall be marked in accordance with ESCC Basic Specification No. 21700.

4.6 ELECTRICAL MEASUREMENTS

4.6.1 Electrical Measurements at Room Temperature

The parameters to be measured in respect of electrical characteristics are scheduled in Table 2. Unless otherwise specified these measurements shall be performed at $T_{amb} = +22 \pm 3 \text{ }^\circ\text{C}$.

4.6.2 Electrical Measurements at High and Low Temperatures (Table 3)

Not applicable.

4.6.3 Circuit for Electrical Measurements (Figure 4)

Not applicable.

4.7 BURN-IN TESTS (TABLES 4 AND 5)

Not applicable.

TABLE 2 - ELECTRICAL MEASUREMENTS AT ROOM TEMPERATURE

NO	CHARACTERISTICS	SYMBOL	SPEC. AND/OR TEST METHOD	TEST CONDITION	VARIANTS	LIMITS		UNIT
						MIN	MAX	
1	Contact Resistance (Low Level Current)	Rcl	ESCC No. 3401 Para 9.1.1.3	Para 9.1.1.3	All	-	8.0	mΩ
2	Contact Resistance (Rated Current)	Rcr	ESCC No. 3401 Para 9.1.1.3	Para 9.1.1.3				mΩ
				5.0A	01, 02	-	14.0	
				7.5A	03, 04	-	7.0	
				13A	05, 06	-	4.0	
				23A	07, 08	-	3.5	

TABLES 3, 4 AND 5

Not applicable.

4.8 ENVIRONMENTAL AND ENDURANCE TESTS

4.8.1 Measurements and Inspections on Completion of Environmental Tests

The parameters to be measured and inspections to be performed on completion of environmental testing are scheduled in Table 6.

Unless otherwise specified, these measurements shall be performed at $T_{amb} = +22 \pm 3 \text{ }^\circ\text{C}$.

4.8.2 Measurements and Inspections at Intermediate Points during Endurance Tests.

Not applicable.

4.8.3 Measurements and Inspections on Completion of Endurance Tests

The parameters to be measured and inspections to be performed on completion of endurance tests shall be those specified in Table 6. Unless otherwise specified, these measurements shall be performed at $T_{amb} = +22 \pm 3 \text{ }^\circ\text{C}$.

4.8.4 Conditions for Operating Life Test (Part of Endurance Testing)

Not applicable.

4.8.5 Electrical Circuits for Operating Life Test

Not applicable.

4.8.6 Conditions for High Temperature Storage Test (Part of Endurance Testing)

The requirements for the high temperature storage test are specified in Section 9 of ESCC Generic Specification No. 3401. The conditions for high temperature storage testing shall be the maximum storage temperature specified in Table 1(b) of this specification.

TABLE 6 - MEASUREMENTS AND INSPECTIONS ON COMPLETION OF ENVIRONMENTAL AND ENDURANCE TESTS

NO.	ESCC GENERIC NO. 3401		MEASUREMENTS AND INSPECTIONS		SYMBOL	LIMITS		UNIT
	ENVIRONMENTAL AND ENDURANCE TESTS (1)	TEST METHOD AND CONDITIONS	IDENTIFICATION	CONDITIONS		MIN	MAX	
01	Wiring	Para. 9.10 & Table 1(a) of this spec.	Low Level Contact Resistance	Table 2 Item 1	Rcl	Table 2 Item 1		
02	Vibration	Para. 9.11	ESCC 3401/044					
03	Shock or Bump	Para. 9.12	ESCC 3401/044					
04	Climatic Sequence	Para. 9.13	ESCC 3401/044					
05	Seal Test	Para. 9.9	ESCC 3401/044					
06	Plating Thickness	Para. 9.14	Thickness	-	-	Para. 4.4.3 of this spec.		
07	Joint Strength	Para. 9.15	ESCC 3401 Para 9.15					
08	Rapid Change of Temperature	Para. 9.16	ESCC 3401/044					
09	Contact Retention (in insert)	Para. 9.17 & Para. 4.3.4 of this spec.	Contact Displacement		-	ESCC 3401 Para. 9.17		
10	Endurance	Para. 9.18	Initial Low Level Contact Resist	Table 2 Item 1	Rcl	Record Values		mΩ
			Final Low Level Contact Resistance Drift	Table 2 Item 1	ΔRcl	-	3.0	
11	Permanence of Marking	Para. 9.19	As applicable					
12	Mating/Unmating Forces	Para. 9.20	ESCC 3401/044					
13	High Temperature Storage	Para. 9.21	Initial Low Level Contact Resist	Table 2 Item 1	Rcl	Record Values		mΩ
			Final Low Level Contact Resistance Drift	Table 2 Item 1	ΔRcl	-	3.0	
			Rated Current Contact Resistance	Table 2 Item 2	Rcr	Table 2 Item 2		
			Contact Retention (in insert)	Para. 4.3.4 of this spec.	-	ESCC 3401 Para. 9.17		
14	Corrosion	Para. 9.22	Visual Examination					

NOTES

1. The tests in this table refer to either Chart IV or V and shall be used as applicable.

TABLE 6 - MEASUREMENTS AND INSPECTIONS ON COMPLETION OF ENVIRONMENTAL AND ENDURANCE TESTS (CONTINUED)

NO.	ESCC GENERIC NO. 3401		MEASUREMENTS AND INSPECTIONS		SYMBOL	LIMITS		UNIT
	ENVIRONMENTAL AND ENDURANCE TESTS (1)	TEST METHOD AND CONDITIONS	IDENTIFICATION	CONDITIONS		MIN	MAX	
15	Insert Retention (in shell)	Para. 9.23 & Para. 4.3.6 of this spec.	ESCC 3401/044					
16	Jackscrew Retention	Para. 9.24 & Para. 4.3.7 of this spec.	ESCC 3401/044					
17	High Temperature Measurements	Para. 9.25	ESCC 3401/044					
18	Overload Test	Para. 9.26	Rated Current Contact Resistance	Table 2 Item 2	Rcr	Table 2 Item 2		
19	Maintenance Aging	Para. 9.27	Visual Examination Contact Retention Contact Insertion & Withdrawal Forces	- Para. 4.3.4 of this spec. Para. 4.3.8 of this spec.	- - -	ESCC 3401 Para.9.17 Para. 4.3.		
20	Engage/Separation Forces	Para. 9.28 & Para. 4.3.9 of this spec.	Force		-	Para. 4.3.9		
21	Oversize Pin Exclusion	Para. 9.29 & Para. 4.3.10 of this spec.			-	ESCC 3401 Para.9.29		
22	Probe Damage	Para. 9.30 & Para. 4.3.11 of this spec.	Contact Separation Force	Para. 4.3.9 of this spec.	-	Para. 4.3.9		
23	Solderability	Para. 9.31 & Para. 4.3.12 of this spec.	Not applicable					

NOTES

1. The tests in this table refer to either Chart IV or V and shall be used as applicable.