



**CAPACITORS, FIXED, GLASS DIELECTRIC,  
BASED ON TYPE CYR10  
ESCC Detail Specification No. 3004/001**

**ISSUE 1  
October 2002**



	ESCC Detail Specification		PAGE ii ISSUE 1
---	---------------------------	--	--------------------

### **LEGAL DISCLAIMER AND COPYRIGHT**

European Space Agency, Copyright © 2002. All rights reserved.

The European Space Agency disclaims any liability or responsibility, to any person or entity, with respect to any loss or damage caused, or alleged to be caused, directly or indirectly by the use and application of this ESCC publication.

This publication, without the prior permission of the European Space Agency and provided that it is not used for a commercial purpose, may be:

- copied in whole in any medium without alteration or modification.
- copied in part, in any medium, provided that the ESCC document identification, comprising the ESCC symbol, document number and document issue, is removed.



europaean space agency  
agence spatiale européenne

Pages 1 to 15

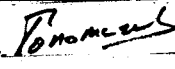

**CAPACITORS, FIXED, GLASS DIELECTRIC,**

**BASED ON TYPE CYR10**

**ESA/SCC Detail Specification No. 3004/001**



**space components  
coordination group**

Issue/Rev.	Date	Approved by	
		SCCG Chairman	ESA Director General or his Deputy
Issue 2	December 1995		

**DOCUMENTATION CHANGE NOTICE**

Rev. Letter	Rev. Date	Reference	CHANGE Item	Approved DCR No.
		This Issue supersedes Issue 1 and incorporates all modifications defined in Revision 'A' to Issue 1 and the changes agreed in the following DCR's:-		
		Cover page		None
		DCN		None
		Para. 2	: Reference to MIL-STD-1276 deleted	21025
		Para. 3	: Second sentence added	23785
		Table 1(a)	: Table columns numbered	23785
			: Symbol 'U <sub>R</sub> ' added to rated voltage column heading	23785
			: '±' moved from tolerance values to column heading	23785
		Table 1(b)	: Column heading 'Limit Ratings' amended to 'Maximum Ratings'	23785
			: Characteristic 'Test Voltage' deleted and others renumbered accordingly	23785
			: No 2, Characteristic amended to 'Operating Temperature Range', Symbol corrected to 'T <sub>op</sub> ' and Tamb added to the remarks column	23785
			: No 3, Characteristic amended to 'Storage Temperature Range, Symbol corrected to 'T <sub>stg</sub> '	23785
			: No 4, Characteristic amended to 'Soldering Temperature', Symbol corrected to 'T <sub>sol</sub> ' and remarks moved to Note 1	23785
		Figure 2	: Imperial dimensions deleted from Table	23785
		Para. 4.2.3	: Title amended	23785
		Para. 4.2.4	: Title amended and deviation added	23785
		Para. 4.2.5	: Deviation added	23785
		Para. 4.3.1	: Wording amended	23785
		Para. 4.3.3	: Test conditions and method deleted	23785
		Para. 4.4.2	: Wording amended	21025
		Para. 4.5.1	: Wording amended	23785
		Para. 4.5.2	: Type Variant reference added	21021
			: Note added	23785
		Para. 4.5.3	: 'Tolerance (1%)' amended to 'Tolerance (± 1.0%)'	23785
		Para. 4.5.3.1	: Wording amended	23785
		Para. 4.5.3.2	: Wording amended and '±' moved to column heading	23785
		Para. 4.6	: Title amended	23785
		Para. 4.6.1	: Second sentence amended	23785
		Para. 4.7	: Title amended	23785
		Para. 4.7.3	: New paragraph added	23785
		Table 2	: Columns standardised and entries reordered	23785
			: No 1, Limits entry amended to 'Note 1'	23785
			: No 2, Symbol corrected to 'Tgδ' and Note reference added	23785
			: No 4, Symbol corrected to 'VP', Limit entry amended to '2.0U <sub>R</sub> ' and Note reference added	23785
			: Notes 1 and 3 added and existing Note numbered as '2'	23785
		Table 3	: Columns standardised	23785
		Figure 4	: Title amended	23785
		Table 4	: Column headings standardised	23785
			: Entries for 'Spec. and/or Test Method' and 'Test Condition' amended to 'As per Table 2'	23785



**ESASCC**

ESA/SCC Detail Specification  
No. 3004/001

PAGE 2A

ISSUE 2

**DOCUMENTATION CHANGE NOTICE**

Rev. Letter	Rev. Date	Reference	CHANGE Item	Approved DCR No.
		Table 5	: Characteristic corrected to 'Capacitance Change'	23785
		Para. 4.8	: Title amended and Symbol corrected to ' $V_T$ '	23785
		Para. 4.8.1	: Title amended	23785
		Para. 4.8.2	: Title and first sentence amended	23785
		Para. 4.8.2	: Title and first sentence amended, second sentence added	23785
		Para. 4.8.3	: Title and first sentence amended	23785
		Para. 4.8.5	: New paragraph added	23785
		Table 6	: Format amended and corrected	23785

**TABLE OF CONTENTS**

	<u>Page</u>
<b>1. <u>GENERAL</u></b>	<b>5</b>
1.1 Scope	5
1.2 Range of Components	5
1.3 Maximum Ratings	5
1.4 Parameter Derating Information	5
1.5 Physical Dimensions	5
1.6 Functional Diagram	5
<b>2. <u>APPLICABLE DOCUMENTS</u></b>	<b>5</b>
<b>3. <u>TERMS, DEFINITIONS, ABBREVIATIONS, SYMBOLS AND UNITS</u></b>	<b>5</b>
<b>4. <u>REQUIREMENTS</u></b>	<b>8</b>
4.1 General	8
4.2 Deviations from Generic Specification	8
4.2.1 Deviations from Special In-process Controls	8
4.2.2 Deviations from Final Production Tests	8
4.2.3 Deviations from Burn-in and Electrical Measurements	8
4.2.4 Deviations from Qualification Tests	8
4.2.5 Deviations from Lot Acceptance Tests	8
4.3 Mechanical Requirements	8
4.3.1 Dimension Check	8
4.3.2 Weight	8
4.3.3 Terminal Strength	8
4.4 Materials and Finishes	9
4.4.1 Case	9
4.4.2 Leads	9
4.5 Marking	9
4.5.1 General	9
4.5.2 The SCC Component Number	9
4.5.3 Electrical Characteristics and Ratings	10
4.5.4 Traceability Information	11
4.6 Electrical Measurements	11
4.6.1 Electrical Measurements at Room Temperature	11
4.6.2 Electrical Measurements at High and Low Temperatures	11
4.6.3 Circuits for Electrical Measurements	11
4.7 Burn-in Tests	11
4.7.1 Parameter Drift Values	11
4.7.2 Conditions for Burn-in	11
4.7.3 Electrical Circuit for Burn-in	11
4.8 Environmental and Endurance Tests	14
4.8.1 Measurements and Inspections on Completion of Environmental Tests	14
4.8.2 Measurements and Inspections at Intermediate Points during Endurance Tests	14
4.8.3 Measurements and Inspections on Completion of Endurance Tests	14
4.8.4 Conditions for Operating Life Tests	14
4.8.5 Electrical Circuit for Operating Life Tests	14



**TABLES**

1(a)	Range of Components	6
1(b)	Maximum Ratings	6
2	Electrical Measurements at Room Temperature	12
3	Electrical Measurements at High and Low Temperatures	12
4	Parameter Drift Values	13
5	Conditions for Burn-in and Operating Life Tests	13
6	Measurements and Inspections on Completion of Environmental Tests and at Intermediate Points and on Completion of Endurance Testing	15

**FIGURES**

1	Parameter Derating Information	6
2	Physical Dimensions	7
3	Functional Diagram	7
4	Circuits for Electrical Measurements	13
5	Electrical Circuit for Burn-in and Operating Life Tests	13

**APPENDICES (Applicable to specific Manufacturers only)**

None.

**1. GENERAL****1.1 SCOPE**

This specification details the ratings, physical and electrical characteristics, test and inspection data for Capacitors, Fixed, Glass Dielectric, based on Type CYR10. It shall be read in conjunction with ESA/SCC Generic Specification No. 3004, the requirements of which are supplemented herein.

**1.2 RANGE OF COMPONENTS**

The range of capacitors covered by this specification is scheduled in Table 1(a).

**1.3 MAXIMUM RATINGS**

The maximum ratings, which shall not be exceeded at any time during use or storage, applicable to the capacitors specified herein, are scheduled in Table 1(b).

**1.4 PARAMETER DERATING INFORMATION (FIGURE 1)**

Not applicable.

**1.5 PHYSICAL DIMENSIONS**

The physical dimensions of the capacitors specified herein are shown in Figure 2.

**1.6 FUNCTIONAL DIAGRAM**

The functional diagram for the capacitors specified herein is shown in Figure 3.

**2. APPLICABLE DOCUMENTS**

The following documents form part of this specification and shall be read in conjunction with it:-

(a) ESA/SCC Generic Specification No. 3004 for Capacitors, Fixed, Glass Dielectric.

**3. TERMS, DEFINITIONS, ABBREVIATIONS, SYMBOLS AND UNITS**

For the purpose of this specification, the terms, definitions, abbreviations, symbols and units specified in ESA/SCC Basic Specification No. 21300 shall apply. In addition, the following symbol is used:-

$V_T$  = Test Voltage.



**TABLE 1(a) - RANGE OF COMPONENTS**

(1) Item No.	(2) Capacitance Range (pF)	(3) Tolerance		(4) Rated Voltage $U_R$ (V)
		(±%)	(±pF)	
01	0.5 to 12	-	0.25	500
02	5.6 to 200	5.0	-	500
03	13 to 200	2.0	-	500
04	27 to 200	1.0	-	500
05	220 to 300	5.0	-	300
06	220 to 300	2.0	-	300
07	220 to 300	1.0	-	300

**TABLE 1(b) - MAXIMUM RATINGS**

No.	Characteristics	Symbol	Maximum Ratings	Unit	Remarks
1	Rated Voltage	$U_R$	See Table 1(a)	V	
2	Operating Temperature Range	$T_{op}$	- 55 to +125	°C	$T_{amb}$
3	Storage Temperature Range	$T_{stg}$	- 55 to +125	°C	
4	Soldering Temperature	$T_{sol}$	+ 350	°C	Note 1

**NOTES**

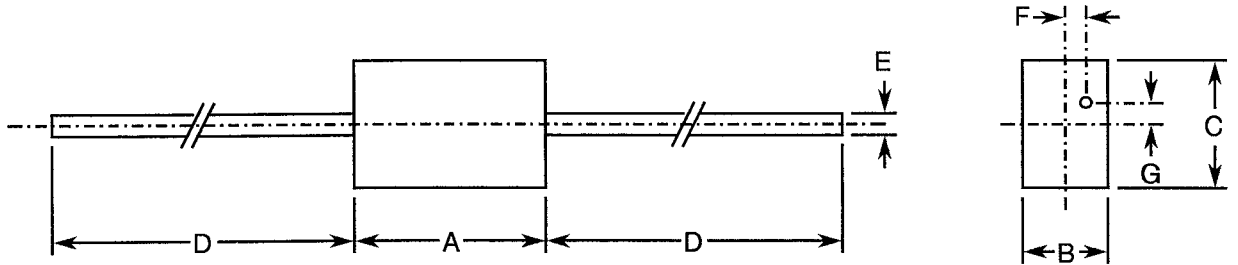
1. Duration 5.0 seconds maximum at a distance of not less than 3.0mm from the device body.

**FIGURE 1 - PARAMETER DERATING INFORMATION**

Not applicable.

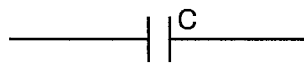


**FIGURE 2 - PHYSICAL DIMENSIONS**



Symbol	Millimetres	
	Min.	Max.
A	7.50	9.90
B	1.20	2.80
C	3.60	5.20
D	28.60	-
E	0.49	0.61
F	-	0.40
G	-	0.40

**FIGURE 3 - FUNCTIONAL DIAGRAM**





#### 4. REQUIREMENTS

##### 4.1 GENERAL

The complete requirements for procurement of the capacitors specified herein are stated in this specification and ESA/SCC Generic Specification No. 3004 for Capacitors, Fixed, Glass Dielectric. Deviations from the Generic Specification, applicable to this specification only, are listed in Para. 4.2.

Deviations from the applicable Generic Specification and this Detail Specification, formally agreed with specific Manufacturers on the basis that the alternative requirements are equivalent to the ESA/SCC requirements and do not affect the components' reliability, are listed in the appendices attached to this specification.

##### 4.2 DEVIATIONS FROM GENERIC SPECIFICATION

###### 4.2.1 Deviations from Special In-process Controls

None.

###### 4.2.2 Deviations from Final Production Tests (Chart II)

None.

###### 4.2.3 Deviations from Burn-in and Electrical Measurements (Chart III)

None.

###### 4.2.4 Deviations from Qualification Tests (Chart IV)

(a) Para. 9.12, Terminal Strength: Applied Force : 20N.

###### 4.2.5 Deviations from Lot Acceptance Tests (Chart V)

(a) Para. 9.12, Terminal Strength: Applied Force : 20N.

##### 4.3 MECHANICAL REQUIREMENTS

###### 4.3.1 Dimension Check

The dimensions of the capacitors specified herein shall be verified in accordance with the requirements set out in Para. 9.5 of ESA/SCC Generic Specification No. 3004 and they shall conform to those shown in Figure 2 of this specification.

###### 4.3.2 Weight

The maximum weight of the capacitors specified herein shall be 0.5 grammes.

###### 4.3.3 Terminal Strength

The requirements for terminal strength testing are specified in Para. 9.12 of ESA/SCC Generic Specification No. 3004.



**4.4 MATERIALS AND FINISHES**

The materials and finishes shall be as specified herein. Where a definite material is not specified, a material which will enable the capacitors specified herein to meet the performance requirements of this specification shall be used. Acceptance or approval of any constituent material does not guarantee acceptance of the finished product.

**4.4.1 Case**

The case shall be glass, hermetically sealed.

**4.4.2 Lead Material and Finish**

The lead material shall be Type 'C' with Type '3' finish in accordance with the requirements of ESA/SCC Basic Specification No. 23500.

**4.5 MARKING**

**4.5.1 General**

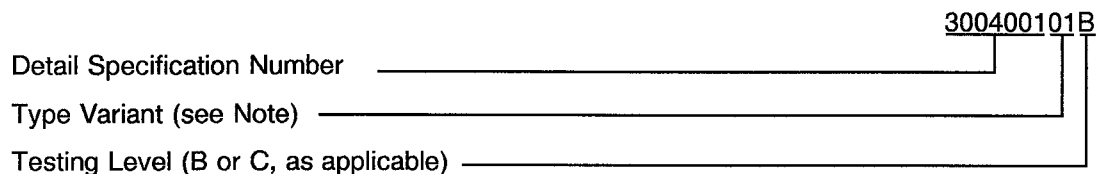
The marking of components delivered to this specification shall be in accordance with the requirements of ESA/SCC Basic Specification No. 21700 and the following paragraphs. When the component is too small to accommodate all of the marking as specified, as much as space permits shall be marked and the marking information, in full, shall accompany the component in its primary package.

The information to be marked and the order of precedence, shall be as follows:-

- (a) The SCC Component Number.
- (b) Electrical Characteristics and Ratings.
- (c) Traceability Information.

**4.5.2 The SCC Component Number**

The SCC Component Number shall be constituted and marked as follows:-



**N.B.**

Marking of the Type Variant Number is mandatory. No further reference to Type Variants is made in this specification.

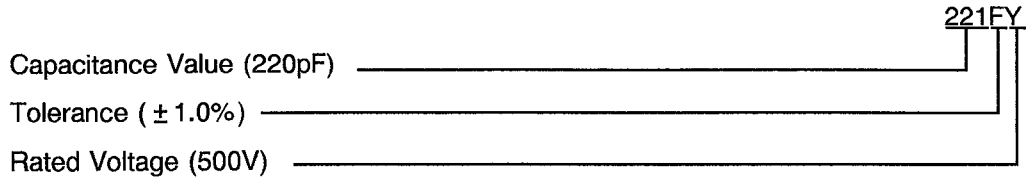


4.5.3 Electrical Characteristics and Ratings

The electrical characteristics and ratings to be marked in the following order of precedence are:-

- (a) Capacitance Value.
- (b) Tolerance.
- (c) Rated Voltage.

The information shall be constituted and marked as follows:-



4.5.3.1 Capacitance Values

Capacitance values shall be expressed by means of the following codes. The unit quantity for marking shall be picofarads.

Capacitance Value	Code
X.X	XCX
XX	XX0
XX10 <sup>1</sup>	XX1

4.5.3.2 Tolerances

The tolerances on capacitance values shall be indicated by the code letters specified hereafter.

Tolerance ( ± )	Code Letter
1.0%	F
2.0%	G
5.0%	J
0.25pF	C

4.5.3.3 Rated Voltage

The rated voltage shall be indicated by the code letters specified hereafter.

Rated Voltage (U <sub>R</sub> ) (V)	Code Letter
300	V
500	Y



#### 4.5.4 Traceability Information

Traceability information shall be marked in accordance with the requirements of ESA/SCC Basic Specification No. 21700.

#### 4.6 ELECTRICAL MEASUREMENTS

##### 4.6.1 Electrical Measurements at Room Temperature

The parameters to be measured at room temperature are scheduled in Table 2. Unless otherwise specified, the measurements shall be performed at  $T_{amb} = +22 \pm 3$  °C.

##### 4.6.2 Electrical Measurements at High and Low Temperatures

The parameters to be measured at high and low temperatures are scheduled in Table 3. The AQL shall be 2.5% for each capacitance value. Each capacitance value shall be considered as constituting a complete lot. For qualification or lot acceptance testing, the sample size shall be as specified in ESA/SCC Generic Specification No. 3004.

##### 4.6.3 Circuits for Electrical Measurements

A circuit for use in performing the electrical measurements listed in Table 2 of this specification is shown in Figure 4.

#### 4.7 BURN-IN TESTS

##### 4.7.1 Parameter Drift Values

The parameter drift values applicable to burn-in are specified in Table 4 of this specification. Unless otherwise stated, measurements shall be performed at  $T_{amb} = +22 \pm 3$  °C. The parameter drift values ( $\Delta$ ) applicable to the parameters scheduled shall not be exceeded. In addition to these drift value requirements for a given parameter, the appropriate limit value specified in Table 2 shall not be exceeded.

##### 4.7.2 Conditions for Burn-in

The requirements for burn-in are specified in Section 7 of ESA/SCC Generic Specification No. 3004. The conditions for burn-in shall be as specified in Table 5 of this specification.

On completion of burn-in, a recovery period of  $24 \pm 2$  hours is necessary before performance of the end-measurements.

##### 4.7.3 Electrical Circuit for Burn-in (Figure 5)

Not applicable.

**TABLE 2 - ELECTRICAL MEASUREMENTS AT ROOM TEMPERATURE**

No.	Characteristics	Symbol	ESA/SCC 3004 Test Method	Limits		Unit	Remarks
				Min.	Max.		
1	Capacitance	C	Para. 9.3.1.1	Note 1		pF	
2	Tangent of Loss Angle	Tg $\delta$	Para. 9.3.1.2	-	10	10 <sup>-4</sup>	Note 2
3	Insulation Resistance	Ri	Para. 9.3.1.3	50	-	G $\Omega$	
4	Voltage Proof	VP	Para. 9.3.1.4	2.0U <sub>R</sub>	-	V	Note 3

**NOTES**

1. See Columns 2 and 3 of Table 1(a).
2. Or 15.10<sup>-4</sup> for values  $\leq 47$ pF.
3. See Column 4 of Table 1(a) for U<sub>R</sub>.

**TABLE 3 - ELECTRICAL MEASUREMENTS AT HIGH AND LOW TEMPERATURES**

No.	Characteristics	Symbol	ESA/SCC 3004 Test Method	Test Conditions (Note 1)	Limits		Unit
					Min.	Max.	
3	Insulation Resistance (Between Terminals)	Ri	Para. 9.3.1.3	+125 $\pm$ 3 °C	10	-	G $\Omega$

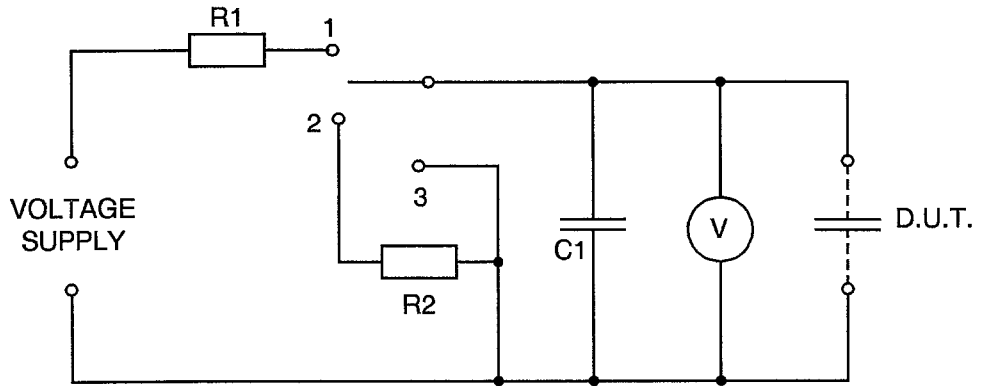
**NOTES**

1. These measurements shall be performed on a sample basis AQL = 2.5, Inspection Level II.



**FIGURE 4 - CIRCUITS FOR ELECTRICAL MEASUREMENTS**

**FIGURE 4(a) - TEST CIRCUIT FOR VOLTAGE PROOF**



**NOTES**

1. The resistance of the Voltmeter shall be not less than 10000 Ω/V. The capacitance of C shall be at least 10 times that of D.U.T.
2. The resistances of R1 and R2 shall be such that the initial charging and discharging current does not exceed 0.05A at the highest test voltage.

**TABLE 4 - PARAMETER DRIFT VALUES**

No.	Characteristics	Symbol	Spec. and/or Test Method	Test Conditions	Change Limits (Δ)	Unit
1	Capacitance Change	$\frac{\Delta C}{C}$	As per Table 2	As per Table 2	± 0.5 or (1) ± 0.5	%  pF

**NOTES**

1. Whichever is greater, referred to the initial value.

**TABLE 5 - CONDITIONS FOR BURN-IN AND OPERATING LIFE TESTS**

No.	Characteristic	Symbol	Condition	Unit
1	Ambient Temperature	T <sub>amb</sub>	+ 125	°C
2	Test Voltage	V <sub>T</sub>	1.5U <sub>R</sub>	V

**FIGURE 5 - ELECTRICAL CIRCUIT FOR BURN-IN AND OPERATING LIFE TESTS**

Not applicable.





4.8 ENVIRONMENTAL AND ENDURANCE TESTS (CHARTS IV AND V OF ESA/SCC GENERIC SPECIFICATION NO. 3004)

4.8.1 Measurements and Inspections on Completion of Environmental Tests

The parameters to be measured and inspections to be performed on completion of environmental tests are scheduled in Table 6. Unless otherwise stated, the measurements shall be performed at  $T_{amb} = +22 \pm 3 \text{ }^{\circ}\text{C}$ .

4.8.2 Measurements and Inspections at Intermediate Points during Endurance Tests

The parameters to be measured and inspections to be performed at intermediate points during endurance tests are scheduled in Table 6. Unless otherwise stated, the measurements shall be performed at  $T_{amb} = +22 \pm 3 \text{ }^{\circ}\text{C}$ .

4.8.3 Measurements and Inspections on Completion of Endurance Tests

The parameters to be measured and inspections to be performed on completion of endurance tests are scheduled in Table 6. Unless otherwise stated, the measurements shall be performed at  $T_{amb} = +22 \pm 3 \text{ }^{\circ}\text{C}$ .

4.8.4 Conditions for Operating Life Tests (Part of Endurance Testing)

The requirements for operating life testing are specified in Section 9 of ESA/SCC Generic Specification No. 3004. The conditions for operating life testing shall be as specified in Table 5 of this specification.

4.8.5 Electrical Circuit for Operating Life Tests (Figure 5)

Not applicable.



**TABLE 6 - MEASUREMENTS AND INSPECTIONS ON COMPLETION OF ENVIRONMENTAL TESTS AND AT INTERMEDIATE POINTS AND ON COMPLETION OF ENDURANCE TESTING**

NO.	ESA/SCC GENERIC SPEC.NO. 3004		MEASUREMENTS AND INSPECTIONS		SYMBOL	LIMITS		UNIT
	ENVIRONMENTAL AND ENDURANCE TESTS (1)	TEST METHOD AND CONDITIONS	IDENTIFICATION	CONDITIONS		MIN.	MAX.	
01	Moisture Resistance	Para. 9.8 During first 10 cycles loading voltage of 90 to 100V to be applied	<b>During Test</b> <b>Final Measurements</b> Insulation Resistance Visual Examination Capacitance Tangent of Loss Angle Voltage Proof	Once a day Shorts After a recovery period of 1 to 4 hours Table 2 Item 3 Between 4 and 24 hours later Corrosion or mechanical damage Table 2 Item 1 Table 2 Item 2 Table 2 Item 4	- Ri - C $T_g\delta$ $V_P$	- 50 - Table 2 Item 1 - $2.0U_R$	- - - 10 (2) -	- GΩ - pF $10^{-4}$ V
02	Shock	Para. 9.9	<b>During Shock</b> Intermittent Contact Visual Examination	Open or Shorts Arcing or Damage	- -	- -	- -	- -
03	Vibration	Para. 9.10	<b>During Last Cycle</b> Intermittent Contact	Open or Shorts	-	-	-	-
04	Solderability	Para. 9.11	Visual Examination	MIL-STD-202, Method 208, Solid Wire Termination Criteria	-	-	-	-
05	Terminal Strength	Para. 9.12 and Para's 4.2.4 and 4.2.5 of this spec.	Visual Examination	Loose/ruptured terminals or damage to terminals or seal	-	-	-	-
06	Barometric Pressure	Para. 9.13 During test $1.5U_R$ for between 1 and 5 seconds	Visual Examination	Arcing, breakdown or damage	-	-	-	-
07	Temperature Coefficient	Para. 9.14.1	Temperature Coefficient	Para. 9.14.1 of ESA/SCC 3004	TC	115	165	ppm
08	Capacitance Drift	Para. 9.14.2	Capacitance Change	Para. 9.14.2 of ESA/SCC 3004	$\frac{\Delta C}{C}$	-	+0.1	% or (3) pF
09	Resistance to Soldering Heat	Para. 9.15	<b>Initial Measurements</b> Capacitance <b>Final Measurements</b> Capacitance Change Tangent of Loss Angle Insulation Resistance	Table 2 Item 1 After a recovery period of $10 \pm 1$ minutes Table 2 Item 1 Table 2 Item 2 Table 2 Item 3	C $\frac{\Delta C}{C}$ $T_g\delta$ Ri	Table 2 Item 1 -0.5 - 50	Table 2 Item 1 +0.5 10 (2) -	pF % or (3) pF $10^{-4}$ GΩ
10	Operating Life	Para. 9.16	<b>Initial Measurements</b> Capacitance <b>Intermediate Measurements</b> Capacitance Change Tangent of Loss Angle Insulation Resistance <b>Final Measurements</b> Capacitance Change Tangent of Loss Angle Insulation Resistance	Table 2 Item 1 Table 2 Item 1 Table 2 Item 2 Table 2 Item 3 Table 2 Item 1 Table 2 Item 2 Table 2 Item 3	C $\frac{\Delta C}{C}$ $T_g\delta$ Ri $\frac{\Delta C}{C}$ $T_g\delta$ Ri	Table 2 Item 1 -0.5 - 50 (4) -0.5 - 50 (4)	Table 2 Item 1 +0.5 15 (4) - +0.5 15 (4) -	pF % or (3) pF $10^{-4}$ GΩ % or (3) pF $10^{-4}$ GΩ

**NOTES**

- The tests in this Table refer to either Chart IV or V and shall be used as applicable.
- Or  $15.10^{-4}$  for values  $\leq 47\text{pF}$ .
- Whichever is greater, referred to the initial value.
- For information only.