



**RELAY, ELECTROMAGNETIC, NON-LATCHING,
28VDC, 10A, 2PDT**

ESCC Detail Specification No. 3601/001

Issue 5	June 2021
---------	-----------



LEGAL DISCLAIMER AND COPYRIGHT

European Space Agency, Copyright © 2021. All rights reserved.

The European Space Agency disclaims any liability or responsibility, to any person or entity, with respect to any loss or damage caused, or alleged to be caused, directly or indirectly by the use and application of this ESCC publication.

This publication, without the prior permission of the European Space Agency and provided that it is not used for a commercial purpose, may be:

- copied in whole, in any medium, without alteration or modification.
- copied in part, in any medium, provided that the ESCC document identification, comprising the ESCC symbol, document number and document issue, is removed.

DOCUMENTATION CHANGE NOTICE

(Refer to <https://escies.org> for ESCC DCR content)

DCR No.	CHANGE DESCRIPTION
1424	Specification updated to incorporate changes per DCR.

TABLE OF CONTENTS

1	GENERAL	5
1.1	SCOPE	5
1.2	APPLICABLE DOCUMENTS	5
1.3	TERMS, DEFINITIONS, ABBREVIATIONS, SYMBOLS AND UNITS	5
1.4	THE ESCC COMPONENT NUMBER AND COMPONENT TYPE VARIANTS	5
1.4.1	The ESCC Component Number	5
1.4.1.1	Characteristics and/or Ratings Codes	5
1.4.2	Component Type Variants and Range of Components	6
1.5	MAXIMUM RATINGS	6
1.6	PHYSICAL DIMENSIONS AND TERMINAL IDENTIFICATION	7
1.6.1	Raised Vertical Flange Mount and Solder Pin Terminals with Polarizing Pin (Variant 03)	7
1.6.2	Raised Vertical Flange Mount and Solder Hook Terminals (Variant 04)	8
1.6.3	Horizontal Flange Mount and Solder Pin Terminals with Polarizing Pin (Variant 05)	9
1.6.4	Horizontal Flange Mount and Solder Hook Terminals (Variant 06)	10
1.7	FUNCTIONAL DIAGRAM	11
1.8	MATERIALS AND FINISHES	11
1.8.1	Case	11
1.8.2	Terminals	11
2	REQUIREMENTS	11
2.1	GENERAL	11
2.1.1	Deviations from the Generic Specification	11
2.2	MARKING	11
2.3	TERMINAL STRENGTH	12
2.4	ELECTRICAL MEASUREMENTS AT ROOM, HIGH AND LOW TEMPERATURES	12
2.4.1	Room Temperature Electrical Measurements	12
2.4.2	High and Low Temperatures Electrical Measurements	13
2.5	PARAMETER DRIFT VALUES	13
2.6	INTERMEDIATE AND END-POINT ELECTRICAL MEASUREMENTS	14
2.7	RUN-IN CONDITIONS	17
	APPENDIX A	18

1 GENERAL

1.1 SCOPE

This specification details the ratings, physical and electrical characteristics, and test and inspection data for the component type variants and/or the range of components specified below. It supplements the requirements of, and shall be read in conjunction with, the ESCC Generic Specification listed under Applicable Documents.

1.2 APPLICABLE DOCUMENTS

The following documents form part of this specification and shall be read in conjunction with it:

- (a) ESCC Generic Specification No. [3601](#).

1.3 TERMS, DEFINITIONS, ABBREVIATIONS, SYMBOLS AND UNITS

For the purpose of this specification, the terms, definitions, abbreviations, symbols and units specified in ESCC Basic Specification No. [21300](#) shall apply.

1.4 THE ESCC COMPONENT NUMBER AND COMPONENT TYPE VARIANTS

1.4.1 The ESCC Component Number

The ESCC Component Number shall be constituted as follows:

Example: 36010010328V

- Detail Specification Reference: 3601001
- Component Type Variant Number: 03 (as required)
- Characteristic code: Rated Coil Voltage (28Vdc): 28V (as required)

1.4.1.1 *Characteristics and/or Ratings Codes*

Characteristics and/or ratings to be codified as part of the ESCC Component Number shall be as follows:

- (a) Rated Coil Voltage expressed by means of the following codes:

Rated Coil Voltage (Vdc)	Code
28	28V
12	12V

1.4.2 Component Type Variants and Range of Components

The component type variants and range of components applicable to this specification are as follows:

Variant Number	Case and Terminal Description (Note 1)	Rated Coil Voltage (Vdc)	Weight max (g)
03	Raised Vertical Flange Mount Solder Pin Terminals with Polarizing Pin	28, 12	41
04	Raised Vertical Flange Mount Solder Hook Terminals	28, 12	41
05	Horizontal Flange Mount Solder Pin Terminals with Polarizing Pin	28, 12	41
06	Horizontal Flange Mount Solder Hook Terminals	28, 12	41

NOTES:

1. See Para. 1.6.

1.5 MAXIMUM RATINGS

The maximum ratings shall not be exceeded at any time during use or storage.

Maximum ratings shall only be exceeded during testing to the extent specified in this specification and when stipulated in Test Methods and Procedures of the ESCC Generic Specification.

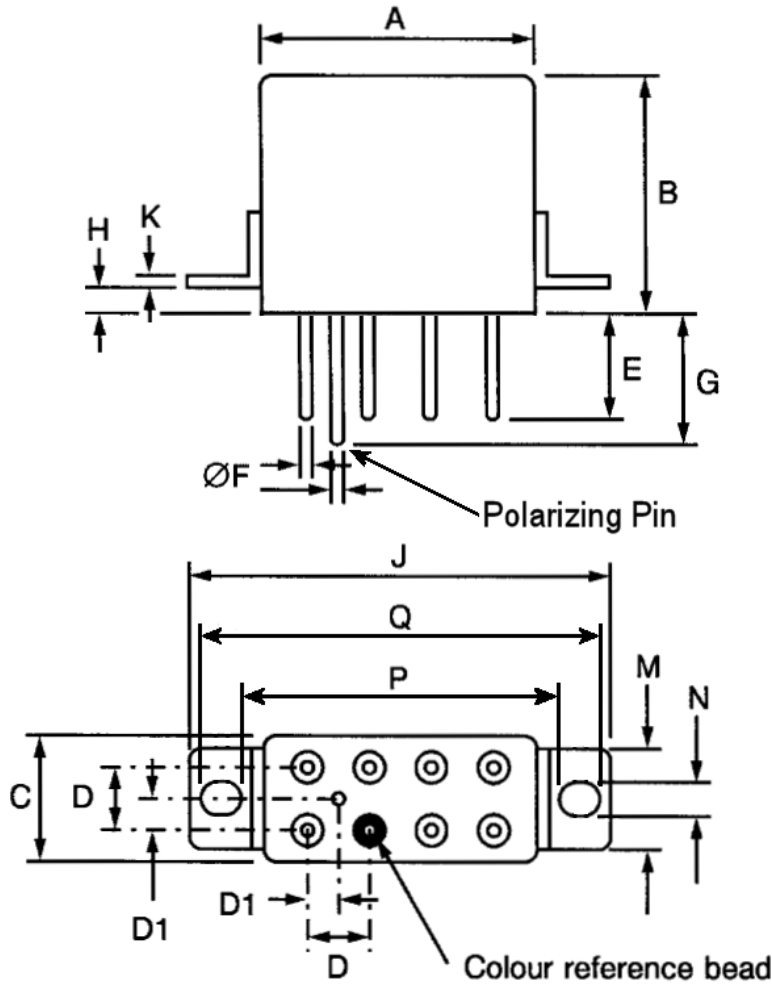
Characteristics	Symbols	Maximum Ratings	Units	Remarks
Coil Voltage Range	V_{CR}	26.5 to 32 11 to 14.8	Vdc	Rated Coil Voltage: 28Vdc Rated Coil Voltage: 12Vdc
Rated Resistive Load Contact Current	I_{CR}	10	A	28Vdc resistive Note 1
Rated Inductive Load Contact Current	I_{CL}	8	A	28Vdc inductive Note 1
Overload Current	$I_{OVERLOAD}$	40	A	28Vdc resistive
Operating Temperature Range	T_{op}	-65 to +125	°C	T_{amb}
Storage Temperature Range	T_{stg}	-65 to +125	°C	T_{amb}
Soldering Temperature	T_{sol}	+260	°C	Note 2

NOTES:

1. Relays should not be used in change-over mode where the potential difference between stationary contacts is greater than 10V and the switched current is greater than 100mA.
2. Duration 10 seconds maximum at a distance not less than 3mm from the device body. The same terminal shall not be resoldered until 3 minutes have elapsed.

1.6 PHYSICAL DIMENSIONS AND TERMINAL IDENTIFICATION

1.6.1 Raised Vertical Flange Mount and Solder Pin Terminals with Polarizing Pin (Variant 03)

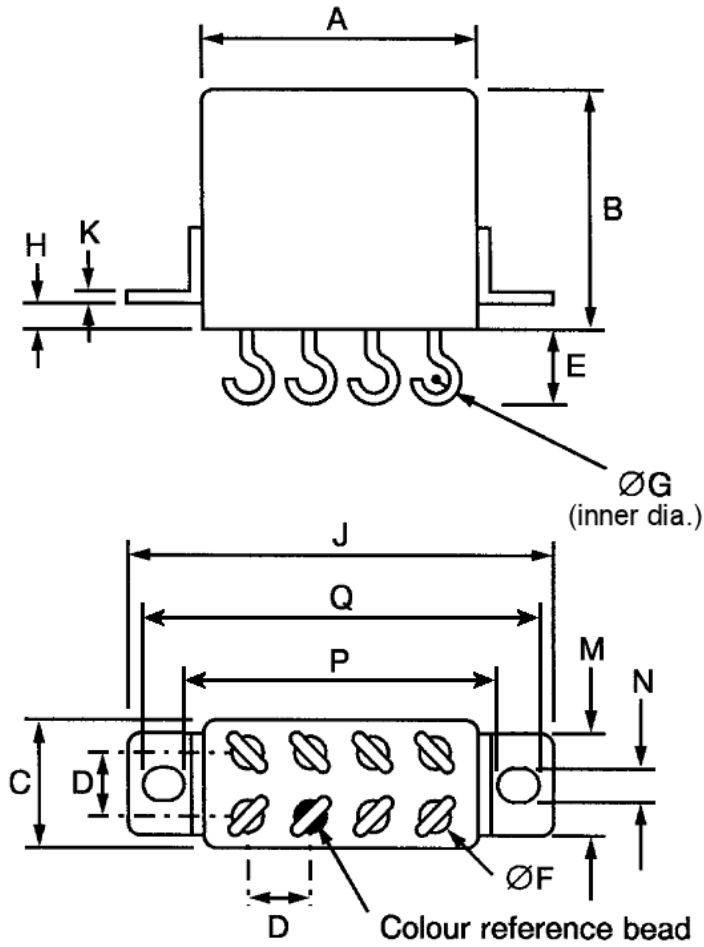


Symbols	Dimensions (mm)		Symbols	Dimensions (mm)	
	Min	Max		Min	Max
A	-	26	H	3.8	4.2
B	-	25.7	J	-	43.6
C	-	13.3	K	0.9	1.1
D	4.88	5.28	M	-	12.3
D1	2.44	2.64	N	3.7	3.9
E	6.7	7.1	P	31.15	32.15
ØF	1.55	1.62	Q	40	41
G	7.4	8			

NOTES:

- Terminal identification is specified by reference to the colour reference bead and the position of the polarizing pin. See Para. 1.7.

1.6.2 Raised Vertical Flange Mount and Solder Hook Terminals (Variant 04)

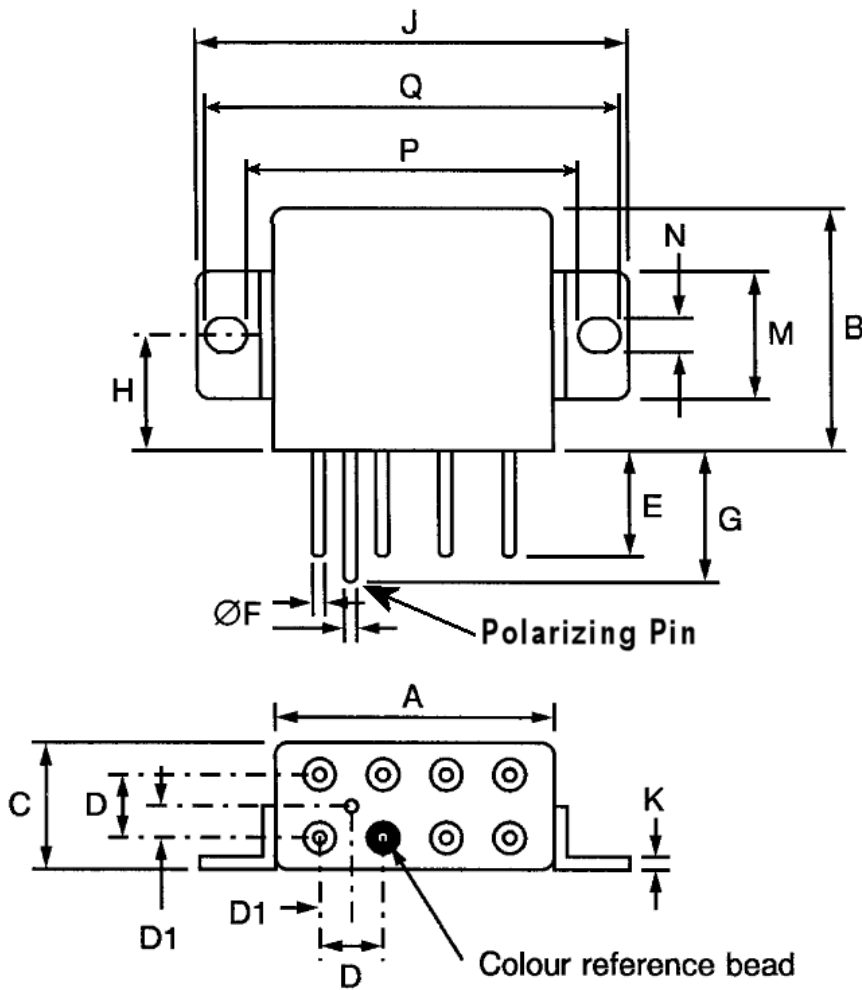


Symbols	Dimensions (mm)		Symbols	Dimensions (mm)	
	Min	Max		Min	Max
A	-	26	H	3.8	4.2
B	-	25.7	J	-	43.6
C	-	13.3	K	0.9	1.1
D	4.88	5.28	M	-	12.3
E	-	8	N	3.7	3.9
ØF	1.52	1.62	P	31.15	32.15
ØG	1.75	2.25	Q	40	41

NOTES:

- Terminal identification is specified by reference to the colour reference bead. See Para. 1.7.

1.6.3 Horizontal Flange Mount and Solder Pin Terminals with Polarizing Pin (Variant 05)

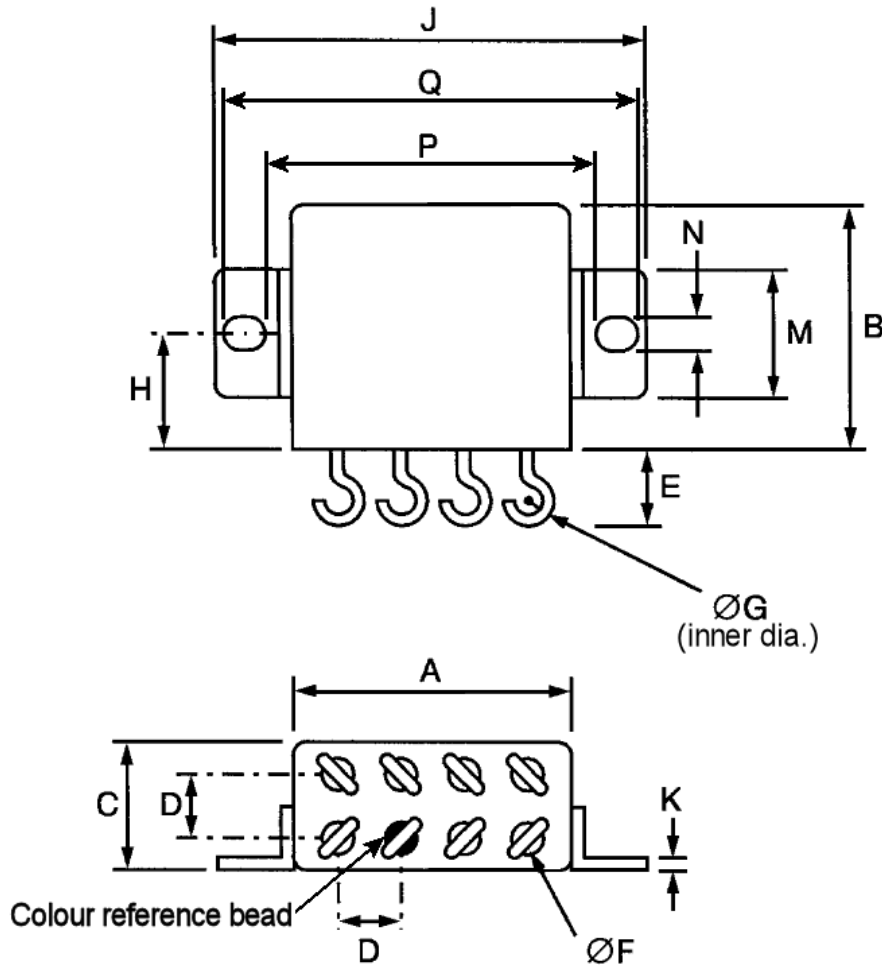


Symbols	Dimensions (mm)		Symbols	Dimensions (mm)	
	Min	Max		Min	Max
A	-	26	H	12.5	12.9
B	-	25.7	J	-	43.6
C	-	13.3	K	0.9	1.1
D	4.88	5.28	M	-	12.3
D1	2.44	2.64	N	3.7	3.9
E	6.7	7.1	P	31.15	32.15
ØF	1.55	1.62	Q	40	41
G	7.4	8			

NOTES:

- Terminal identification is specified by reference to the colour reference bead and the position of the polarizing pin. See Para. 1.7.

1.6.4 Horizontal Flange Mount and Solder Hook Terminals (Variant 06)

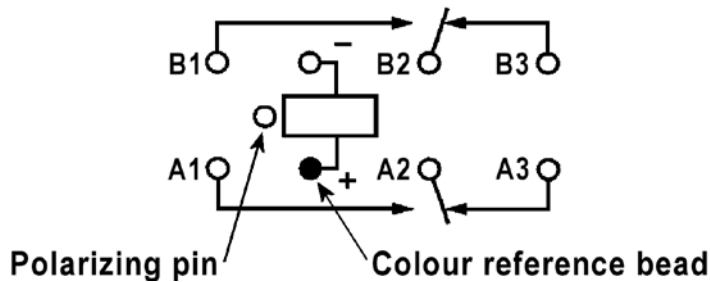


Symbols	Dimensions (mm)		Symbols	Dimensions (mm)	
	Min	Max		Min	Max
A	-	26	H	12.5	12.9
B	-	25.7	J	-	43.6
C	-	13.3	K	0.9	1.1
D	4.88	5.28	M	-	12.3
E	-	8	N	3.7	3.9
ØF	1.52	1.62	P	31.15	32.15
ØG	1.75	2.25	Q	40	41

NOTES:

- Terminal identification is specified by reference to the colour reference bead. See Para. 1.7.

1.7 FUNCTIONAL DIAGRAM



NOTES:

1. As viewed from the terminal side with coil de-energised.
2. Individual terminal designations are for reference purposes only.
3. The polarizing pin is connected to the case (Variants 03, 05 only).

1.8 MATERIALS AND FINISHES

1.8.1 Case

Copper nickel, tin-lead alloy plated, hermetically sealed.

1.8.2 Terminals

The lead material and finish shall be type H3, H4 or H19 in accordance with the requirements of ESCC Basic Specification No. [23500](#).

2 REQUIREMENTS

2.1 GENERAL

The complete requirements for procurement of the components specified herein are as stated in this specification and the ESCC Generic Specification. Permitted deviations from the Generic Specification, applicable to this specification only, are listed below.

Permitted deviations from the Generic Specification and this Detail Specification, formally agreed with specific Manufacturers on the basis that the alternative requirements are equivalent to the ESCC requirement and do not affect the component's reliability, are listed in the appendices attached to this specification.

2.1.1 Deviations from the Generic Specification

None.

2.2 MARKING

The marking shall be in accordance with the requirements of ESCC Basic Specification No. [21700](#) and as follows.

The information to be marked on the component shall be:

- (a) The ESCC qualified components symbol (for ESCC qualified components only).
- (b) The ESCC Component Number (see Para. 1.4.1).
- (c) Traceability information.

2.3 TERMINAL STRENGTH

The terminals of all Variants are defined as rigid.

The test conditions for Terminal Strength, tested as specified in the ESCC Generic Specification, shall be as follows:

- (a) Pull Test :
 - Applied Force: 50N

2.4 ELECTRICAL MEASUREMENTS AT ROOM, HIGH AND LOW TEMPERATURES

Electrical measurements shall be performed at room, high and low temperatures.

2.4.1 Room Temperature Electrical Measurements

The measurements shall be performed at $T_{amb} = +22 \pm 3^{\circ}C$.

Characteristics	Symbols	Test Method and Conditions	Rated Coil Voltage (Vdc)	Limits		Units
				Min	Max	
Pick-up Voltage	U _c	ESCC No. 3601	28	-	13.5	V
			12	-	6.5	
Drop-out Voltage	U _D	ESCC No. 3601	28	2.3	5.5	V
			12	0.75	3.3	
Operate Time	t _E	ESCC No. 3601	All	-	15	ms
Release Time	t _D	ESCC No. 3601	All	-	15	ms
Bounce Time	t _B	ESCC No. 3601	All	-	1	ms
Insulation Resistance	R _I	ESCC No. 3601 V _{TEST} = 500Vdc	All	100	-	MΩ
Voltage Proof (Test Voltage)	V _P	ESCC No. 3601 Maximum Leakage Current I _{LVP} = 1mA	All	1250	-	Vrms
				1000 (1)	-	
Voltage Proof Leakage Current	I _{LVP}	ESCC No. 3601 Note 2	All	-	1	mA
Contact Voltage Drop	V _D	ESCC No. 3601 100mA ≤ I _{TEST} ≤ 10A	All	-	0.015 x I _{TEST}	V
Coil Resistance	R _B	ESCC No. 3601	28	290	350	Ω
			12	72	88	

NOTES:

1. Between coil and case.
2. Measured during Voltage Proof test.

2.4.2 High and Low Temperatures Electrical Measurements

Characteristics	Symbols	Test Method and Conditions	Rated Coil Voltage (Vdc)	Limits		Units
				Min	Max	
Pick-up Voltage	U _C	ESCC No. 3601 T _{amb} = +125(+0 -5)°C and -65 (+5 -0)°C	28 12	- -	19.8 9.9	V
Drop-out Voltage	U _D	ESCC No. 3601 T _{amb} = +125(+0 -5)°C and -65 (+5 -0)°C	28 12	1.5 0.5	7 4.5	V
Operate Time	t _E	ESCC No. 3601 T _{amb} = +125(+0 -5)°C and -65 (+5 -0)°C	All	-	15	ms
Release Time	t _D	ESCC No. 3601 T _{amb} = +125 (+0 -5)°C and -65 (+5 -0)°C	All	-	15	ms
Bounce Time	t _B	ESCC No. 3601 T _{amb} = +125 (+0 -5)°C and -65 (+5 -0)°C	All	-	1	ms
Insulation Resistance	R _I	ESCC No. 3601 T _{amb} = +125 (+0 -5)°C V _{TEST} = 500Vdc	All	50	-	MΩ
Contact Voltage Drop	V _D	ESCC No. 3601 T _{amb} = +125 (+0 -5)°C and -65 (+5 -0)°C 100mA ≤ I _{TEST} ≤ 10A	All	-	0.015 x I _{TEST}	V

2.5 PARAMETER DRIFT VALUES

Parameter Drift Values shall be measured as specified in the ESCC Generic Specification.

Unless otherwise specified, the measurements shall be performed at T_{amb} = +22 ±3°C.

The test methods and test conditions shall be as per the corresponding test defined in Para. 2.4.1 Room Temperature Electrical Measurements.

The corresponding absolute limit values for each characteristic shall not be exceeded.

Characteristics	Symbols	Limits			Units
		Drift Value Δ	Absolute		
			Min	Max	
Pick-up Voltage	U _C	Note 1	Note 2	Note 2	V
Drop-out Voltage	U _D	Note 1	Note 2	Note 2	V

NOTES:

1. Drift Value (Δ) limits are not specified. Drift Values shall be recorded for information purposes only.
2. The limit specified in Para. 2.4.1 shall apply.

2.6 INTERMEDIATE AND END-POINT ELECTRICAL MEASUREMENTS

Unless otherwise specified, the measurements shall be performed at $T_{amb} = +22 \pm 3^{\circ}C$.

Unless otherwise specified the test methods and test conditions shall be as per the corresponding test defined in Para. 2.4.1 Room Temperature Electrical Measurements.

Test Reference per ESCC No. 3601	Characteristics	Symbols	Limits		Units
			Min	Max	
Thermal Shock	<u>During 5th Cycle</u>				
	Pick-up Voltage	U_C	Note 2		V
	Drop-out Voltage	U_D	Note 2		V
	Operate Time	t_E	Note 2		ms
	Release Time	t_D	Note 2		ms
	<u>Final Measurements</u>				
	Voltage Proof	VP	Note 3		Vrms
Voltage Proof Leakage Current	I_{LVP}	Note 3		mA	
Low Level Sine Vibration	<u>Final Measurements</u>				
	Pick-up Voltage	U_C	Note 3		V
	Pick-up Voltage Drift	$\Delta U_C/U_C$	Note 1		%
	Drop-out Voltage	U_D	Note 3		V
Drop-out Voltage Drift	$\Delta U_D/U_D$	Note 1		%	
High Level Sine Vibration	<u>Final Measurements</u>				
	Pick-up Voltage	U_C	Note 3		V
	Pick-up Voltage Drift	$\Delta U_C/U_C$	Note 1		%
	Drop-out Voltage	U_D	Note 3		V
Drop-out Voltage Drift	$\Delta U_D/U_D$	Note 1		%	
Low Level Mechanical Shock	<u>Final Measurements</u>				
	Contact Voltage Drop	V_D	Note 3		V
	Pick-up Voltage	U_C	Note 3		V
	Pick-up Voltage Drift	$\Delta U_C/U_C$	Note 1		%
	Drop-out Voltage	U_D	Note 3		V
	Drop-out Voltage Drift	$\Delta U_D/U_D$	Note 1		%
	Voltage Proof	VP	Note 3		Vrms
Voltage Proof Leakage Current	I_{LVP}	Note 3		mA	
High Level Mechanical Shock	<u>Final Measurements</u>				
	Contact Voltage Drop	V_D	Note 3		V
	Pick-up Voltage	U_C	Note 3		V
	Pick-up Voltage Drift	$\Delta U_C/U_C$	Note 1		%
	Drop-out Voltage	U_D	Note 3		V
	Drop-out Voltage Drift	$\Delta U_D/U_D$	Note 1		%
	Voltage Proof	VP	Note 3		Vrms
Voltage Proof Leakage Current	I_{LVP}	Note 3		mA	

Test Reference per ESCC No. 3601	Characteristics	Symbols	Limits		Units
			Min	Max	
Resistance to Soldering Heat	<u>Final Measurements</u>				
	Insulation Resistance	R _I		Note 3	MΩ
	Contact Voltage Drop	V _D		Note 3	V
	Pick-up Voltage	U _C		Note 3	V
	Drop-out Voltage	U _D		Note 3	V
	Coil Resistance	R _B		Note 3	Ω
Inductive Life	<u>During Monitoring</u>				
	Contact Voltage Drop	V _D	-	2.8	V
	<u>Final Measurements</u>				
	Contact Voltage Drop	V _D	-	0.0175 x I _{TEST}	V
	Insulation Resistance	R _I	50	-	MΩ
	Voltage Proof	VP	1000	-	V _{rms}
	Voltage Proof Leakage Current	I _{LVP}		Note 3	mA
	Pick-up Voltage	U _C		Note 3	V
	Pick-up Voltage Drift	ΔU _C /U _C		Note 1	%
	Drop-out Voltage	U _D		Note 3	V
	Drop-out Voltage Drift	ΔU _D /U _D		Note 1	%
	Operate Time	t _E		Note 3	ms
	Release Time	t _D		Note 3	ms
	Bounce Time	t _B		Note 3	ms
		Coil Resistance	R _B		Note 3
Resistive Life	<u>During Monitoring</u>				
	Contact Voltage Drop	V _D	-	2.8	V
	<u>Final Measurements</u>				
	Contact Voltage Drop	V _D	-	0.0175 x I _{TEST}	V
	Insulation Resistance	R _I	50	-	MΩ
	Voltage Proof	VP	1000	-	V _{rms}
	Voltage Proof Leakage Current	I _{LVP}		Note 3	mA
	Pick-up Voltage	U _C		Note 3	V
	Pick-up Voltage Drift	ΔU _C /U _C		Note 1	%
	Drop-out Voltage	U _D		Note 3	V
	Drop-out Voltage Drift	ΔU _D /U _D		Note 1	%
	Operate Time	t _E		Note 3	ms
	Release Time	t _D		Note 3	ms
	Bounce Time	t _B		Note 3	ms
		Coil Resistance	R _B		Note 3

Test Reference per ESCC No. 3601	Characteristics	Symbols	Limits		Units
			Min	Max	
Coil Life	<u>During Step 1 of each Cycle</u>				
	Contact Voltage Drop	V_D		Note 3	V
	Coil Resistance	R_B		Note 3	Ω
	<u>During Step 3 of 1st Cycle</u>				
	Contact Voltage Drop	V_D		Note 2	V
	Operate Time	t_E		Note 2	ms
	Release Time	t_D		Note 2	ms
	<u>During Steps 4 & 5 of 4th Cycle</u>				
	Pick-up Voltage	U_C		Note 2	V
	Drop-out Voltage	U_D		Note 2	V
	<u>Final Measurements</u>				
	Voltage Proof	VP		Note 3	Vrms
	Voltage Proof Leakage Current	I_{LVP}		Note 3	mA
	Insulation Resistance	R_I		Note 3	M Ω
	Contact Voltage Drop	V_D		Note 3	V
	Coil Resistance	R_B		Note 3	Ω
	Operate Time	t_E		Note 3	ms
	Release Time	t_D		Note 3	ms
	Bounce Time	t_B		Note 3	ms
Intermediate Current	<u>During Monitoring</u>				
	Contact Voltage Drop:	V_D			mV
	Pole 1; Group 1, 2, 3 (10A)		-	175	
	Pole 2; Group 1 (0.5A)		-	30	
	Pole 2; Group 2 (0.3A)		-	18	
	Pole 2; Group 3 (0.1A)		-	6	
	<u>Final Measurements</u>				
	Insulation Resistance	R_I	50	-	M Ω
	Voltage Proof	VP		Note 3	Vrms
	Voltage Proof Leakage Current	I_{LVP}		Note 3	mA
	Pick-up Voltage	U_C		Note 3	V
	Pick-up Voltage Drift	$\Delta U_C/U_C$		Note 1	%
	Drop-out Voltage	U_D		Note 3	V
	Drop-out Voltage Drift	$\Delta U_D/U_D$		Note 1	%
	Operate Time	t_E		Note 3	ms
	Release Time	t_D		Note 3	ms
	Bounce Time	t_B		Note 3	ms
	Coil Resistance	R_B		Note 3	Ω
	Contact Voltage Drop	V_D	-	0.0175 X I _{TEST}	V

Test Reference per ESCC No. 3601	Characteristics	Symbols	Limits		Units
			Min	Max	
Mechanical Life	<u>Final Measurements</u>				
	Contact Voltage Drop	V_D	-	$0.0175 \times I_{TEST}$	V
	Pick-up Voltage	U_C		Note 3	V
	Pick-up Voltage Drift	$\Delta U_C / U_C$		Note 1	%
	Drop-out Voltage	U_D		Note 3	V
	Drop-out Voltage Drift	$\Delta U_D / U_D$		Note 1	%
	Operate Time	t_E		Note 3	ms
	Release Time	t_D		Note 3	ms
	Bounce Time	t_B		Note 3	ms
	Coil Resistance	R_B		Note 3	Ω
Overload	<u>During Monitoring</u>				
	Contact Voltage Drop	V_D	-	2.8	V
	<u>Final Measurements</u>				
	Contact Voltage Drop	V_D	-	$0.0175 \times I_{TEST}$	V
	Insulation Resistance	R_I	50	-	M Ω
	Voltage Proof	VP	1000	-	Vrms
	Voltage Proof Leakage Current	I_{LVP}		Note 3	mA
	Pick-up Voltage	U_C		Note 3	V
	Pick-up Voltage Drift	$\Delta U_C / U_C$		Note 1	%
	Drop-out Voltage	U_D		Note 3	V
	Drop-out Voltage Drift	$\Delta U_D / U_D$		Note 1	%
	Operate Time	t_E		Note 3	ms
	Release Time	t_D		Note 3	ms
	Bounce Time	t_B		Note 3	ms
	Coil Resistance	R_B		Note 3	Ω

NOTES:

- Parameter Drift shall be calculated referenced to the measurement immediately prior to the test in question. An additional initial measurement may be performed prior to the test in question if considered necessary. Drift limits are not specified. Drift Values shall be recorded for information purposes only.
- The limits specified in Para. 2.4.2, as applicable to the same test temperature, shall apply.
- The limits specified in Para. 2.4.1 shall apply.

2.7 RUN-IN CONDITIONS

The test conditions for Run-in, tested as specified in the ESCC Generic Specification, shall be as follows:

- Test Temperature: $+22 \pm 3^\circ\text{C}$.

APPENDIX A
AGREED DEVIATIONS FOR REL STPI (F)

ITEMS AFFECTED	DESCRIPTION OF DEVIATIONS
Para. 2.1.1, Deviations from the Generic Specification: Qualification and Periodic Tests - Chart F4	Chart F4: Coil Life subgroup test sequence (under Endurance Subgroup 1): Coil Life and the subsequent tests shall only be performed for Qualification. They are not required for Periodic Testing except in the case of any significant change to the design.