



**CAPACITOR FILTERS, C-TYPE, FEEDTHROUGH,  
ELECTROMAGNETIC INTERFERENCE  
SUPPRESSION, HERMETICALLY SEALED,  
BASED ON TYPE SFC060  
ESCC Detail Specification No. 3008/026**

**ISSUE 1  
October 2002**



	ESCC Detail Specification		PAGE ii ISSUE 1
--	---------------------------	--	--------------------

### **LEGAL DISCLAIMER AND COPYRIGHT**

European Space Agency, Copyright © 2002. All rights reserved.

The European Space Agency disclaims any liability or responsibility, to any person or entity, with respect to any loss or damage caused, or alleged to be caused, directly or indirectly by the use and application of this ESCC publication.

This publication, without the prior permission of the European Space Agency and provided that it is not used for a commercial purpose, may be:

- copied in whole in any medium without alteration or modification.
- copied in part, in any medium, provided that the ESCC document identification, comprising the ESCC symbol, document number and document issue, is removed.



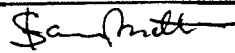
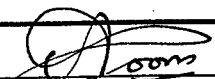

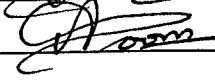
europaean space agency  
agence spatiale européenne

Pages 1 to 19

**CAPACITOR FILTERS, C-TYPE, FEEDTHROUGH,  
ELECTROMAGNETIC INTERFERENCE  
SUPPRESSION, HERMETICALLY SEALED,  
BASED ON TYPE SFC060  
ESA/SCC Detail Specification No. 3008/026**



**space components  
coordination group**

Issue/Rev.	Date	Approved by	
		SCCG Chairman	ESA Director General or his Deputy
Issue 1	June 1996		
Revision 'A'	April 1997		

**SCC**ESA/SCC Detail Specification  
No. 3008/026

Rev. 'A'

PAGE 2


ISSUE 1

**DOCUMENTATION CHANGE NOTICE**

Rev. Letter	Rev. Date	Reference	CHANGE Item	Approved DCR No.
'A'	Apr. '97	P1. Cover page P2. DCN P6. Table 1(a) : P9. Para. 4.2.4 : Para. 4.2.5 : P18. Table 6 :	In column (1), "03, 05" corrected to "03, 06" Deviation "(b)" added Deviation "(b)" added No. 13, Insertion Loss deleted	None None 221384 221384 221384 221384

**TABLE OF CONTENTS**

	<u>Page</u>
<b>1. <u>GENERAL</u></b>	<b>5</b>
1.1 Scope	5
1.2 Component Type Variants and Range of Components	5
1.3 Maximum Ratings	5
1.4 Parameter Derating Information	5
1.5 Physical Dimensions	5
1.6 Functional Diagram	5
<b>2. <u>APPLICABLE DOCUMENTS</u></b>	<b>5</b>
<b>3. <u>TERMS, DEFINITIONS, ABBREVIATIONS, SYMBOLS AND UNITS</u></b>	<b>5</b>
<b>4. <u>REQUIREMENTS</u></b>	<b>9</b>
4.1 General	9
4.2 Deviations from Generic Specification	9
4.2.1 Deviations from Special In-process Controls	9
4.2.2 Deviations from Final Production Tests	9
4.2.3 Deviations from Burn-in and Electrical Measurements	9
4.2.4 Deviations from Qualification Tests	9
4.2.5 Deviations from Lot Acceptance Tests	9
4.3 Mechanical Requirements	9
4.3.1 Dimension Check	9
4.3.2 Weight	9
4.3.3 Robustness of Terminations	9
4.3.4 Solderability	10
4.3.5 Seal Test	10
4.4 Materials and Finishes	10
4.4.1 Case	10
4.4.2 Lead Material and Finish	10
4.4.3 Accessories	10
4.5 Marking	10
4.5.1 General	10
4.5.2 Lead Identification	11
4.5.3 The SCC Component Number	11
4.5.4 Electrical Characteristics and Ratings	11
4.5.5 Traceability Information	12
4.6 Electrical Measurements	12
4.6.1 Electrical Measurements at Room Temperature	12
4.6.2 Electrical Measurements at High and Low Temperatures	12
4.6.3 Circuits for Electrical Measurements	12
4.7 Burn-in Tests	12
4.7.1 Parameter Drift Values	12
4.7.2 Conditions for Burn-in	12
4.7.3 Electrical Circuit for Burn-in	12
4.8 Environmental and Endurance Tests	16
4.8.1 Measurements and Inspections on Completion of Environmental Tests	16
4.8.2 Measurements and Inspections at Intermediate Points during Endurance Tests	16
4.8.3 Measurements and Inspections on Completion of Endurance Tests	16
4.8.4 Conditions for Operating Life Tests	16
4.8.5 Electrical Circuit for Operating Life Tests	16

	<p style="text-align: center;">ESA/SCC Detail Specification No. 3008/026</p>	<p>PAGE 4 ISSUE 1</p>
--	--	---------------------------

**TABLES**



		<u>Page</u>
1(a)	Type Variants and Range of Components	6
1(b)	Maximum Ratings	7
2	Electrical Measurements at Room Temperature - d.c. Parameters	13
	Electrical Measurements at Room Temperature - a.c. Parameters	13
3	Electrical Measurements at High and Low Temperatures	14
4	Parameter Drift Values	15
5(a)	Conditions for Burn-in Tests	15
5(b)	Conditions for Operating Life Tests	15
6	Measurements and Inspections on Completion of Environmental Tests and at Intermediate Points and on Completion of Endurance Testing	17

**FIGURES**

1	Parameter Derating Information	7
2	Physical Dimensions	8
3	Functional Diagram	8
4	Circuits for Electrical Measurements	N/A
5	Electrical Circuit for Burn-in and Operating Life Tests	N/A

**APPENDICES (Applicable to specific Manufacturers only)**

'A'	Agreed Deviations for EUROFARAD (F)	19
-----	-------------------------------------	----

 	ESA/SCC Detail Specification No. 3008/026	PAGE 5 ISSUE 1
---	--	-------------------

**1. GENERAL**

**1.1 SCOPE**

This specification details the ratings, physical and electrical characteristics, test and inspection data for a Capacitor Filter, C-Type, Feedthrough, Electromagnetic Interference Suppression, Hermetically Sealed, based on Type SFC060. It shall be read in conjunction with ESA/SCC Generic Specification No. 3008, the requirements of which are supplemented herein.

**1.2 COMPONENT TYPE VARIANTS AND RANGE OF COMPONENTS**

Variants of the basic type capacitor filters and the range of components covered by this specification, are given in Table 1(a).

**1.3 MAXIMUM RATINGS**

The maximum ratings, which shall not be exceeded at any time during use or storage, applicable to the capacitor filters specified herein, are as scheduled in Table 1(b).

**1.4 PARAMETER DERATING INFORMATION**

The parameter derating information applicable to the capacitor filters specified herein, is shown in Figure 1.

**1.5 PHYSICAL DIMENSIONS**

The physical dimensions of the capacitor filters specified herein, are shown in Figure 2.

**1.6 FUNCTIONAL DIAGRAM**

The functional diagram, showing lead identification, of the capacitor filters specified herein, is shown in Figure 3.

**2. APPLICABLE DOCUMENTS**

The following documents form part of this specification and shall be read in conjunction with it:

- (a) ESA/SCC Generic Specification No. 3008 for Capacitors and Capacitor Filters, Feedthrough.
- (b) MIL-STD-202, Test Methods for Electronic and Electrical Component Parts.

**3. TERMS, DEFINITIONS, ABBREVIATIONS, SYMBOLS AND UNITS**

For the purpose of this specification, the terms, definitions, abbreviations, symbols and units specified in ESA/SCC Basic Specification No. 21300 shall apply. In addition, the following abbreviations are used:-

$V_T$  = Test Voltage.



**TABLE 1(a) - TYPE VARIANTS AND RANGE OF COMPONENTS**

(1) Variant (Notes 1 and 2)	(2) Rated Voltage $U_R$ (V)		(3) Capacitance Range C  (pF) ( $\pm 20\%$ ) (E6 Series)	(4) Voltage Proof VP  (V)	(5) Voltage Drop $V_{dr}$  (V)	(6) d.c. Resistance $R_s$  (m $\Omega$ )	(7) Rated Current $I_R$  (A)
	(a) - 55°C/ + 85°C	(b) + 85°C/ + 125°C					
01, 04	50	25	680 to 220 000	125	0.1	10	10
02, 05	100	75	680 to 47 000	250	0.1	10	10
03, 06	200	150	680 to 10 000	500	0.1	10	10

**NOTES**

1. See Insertion Loss requirements in the following Table.
2. See the Table below and Figure 2 for physical characteristics.

VARIANT	CASE THREAD E
01 to 03	U : 12-32 UNEF
04 to 06	I : M6 $\times$ 0.75

**INSERTION LOSS VALUES ACCORDING TO THE CAPACITANCE VALUE**

(8) Capacitance (pF) (E6 Series)	(9) Insertion Loss ( $I_L$ ) (dB)				
	1.0MHz	10MHz	100MHz	1.0GHz	10GHz
680	-	-	17	37	57
1 000	-	-	21	41	61
1 500	-	-	24	44	64
2 200	-	-	27	48	68
3 300	-	11	31	52	70
4 700	-	14	34	54	70
6 800	-	17	37	57	70
10 000	-	21	41	61	70
15 000	-	25	45	65	70
22 000	8	28	48	68	70
33 000	11	31	51	70	70
47 000	14	34	48	70	70
68 000	17	33	45	70	70
100 000	21	41	50	70	70
150 000	25	45	52	70	70
220 000	28	48	65	70	70

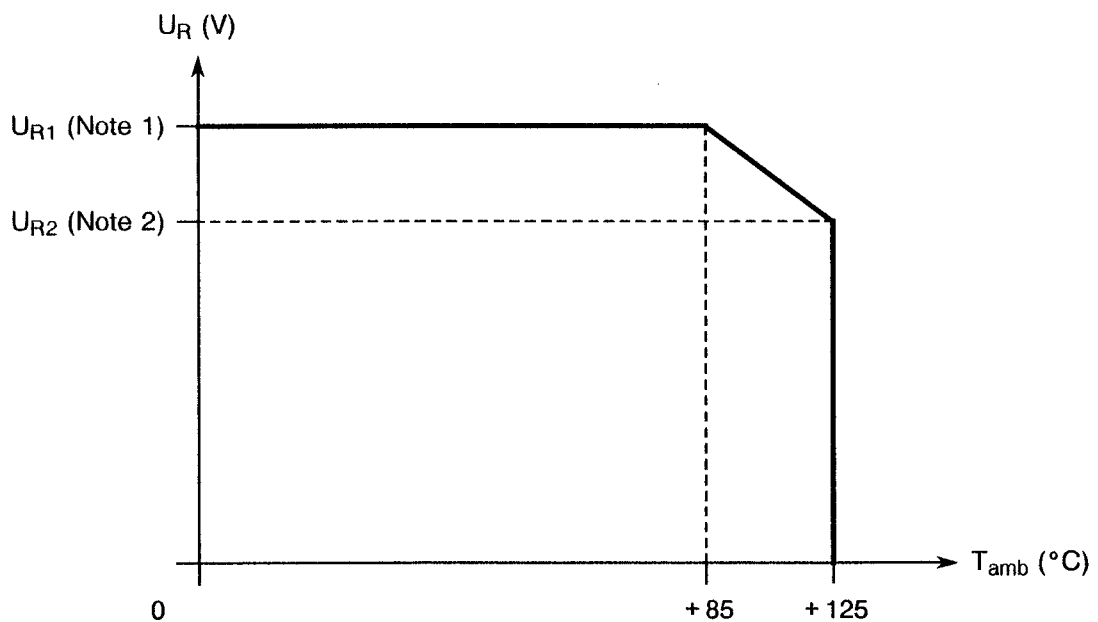


**TABLE 1(b) - MAXIMUM RATINGS**

No.	Characteristic	Symbol	Maximum Ratings	Unit	Remarks
1	Rated d.c. Voltage	$U_R$	See Table 1(a) Column 2	V	Notes 1 and 2
2	Voltage Drop	$V_{dr}$	100	mV	
3	d.c. Resistance	$R_s$	10	$m\Omega$	
4	Rated Current	$I_R$	10	A	Note 3
5	Torque	$T_{qe}$	0.8	Nm	
6	Operating Temperature Range	$T_{op}$	-55 to +125	$^{\circ}C$	$T_{amb}$
7	Storage Temperature Range	$T_{stg}$	-55 to +125	$^{\circ}C$	
8	Soldering Temperature	$T_{sol}$	+260	$^{\circ}C$	Note 4

**NOTES**

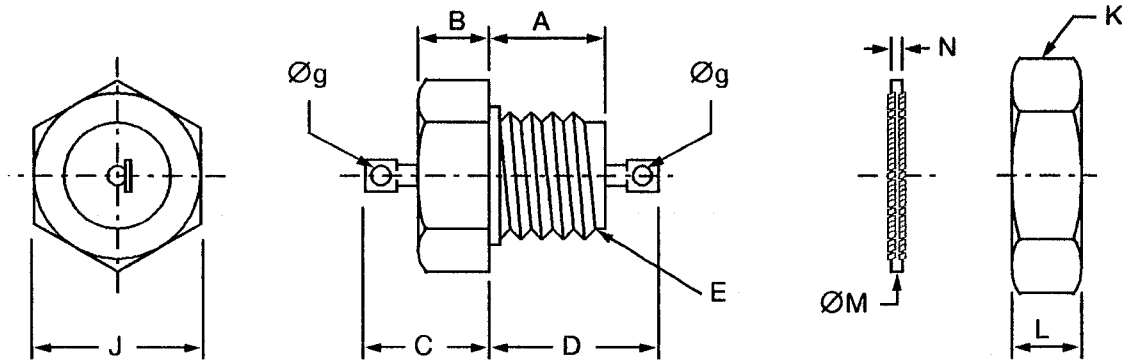
1. At  $T_{amb} \leq +85^{\circ}C$ . For derating at  $T_{amb} > +85^{\circ}C$ , see Figure 1.
2. The addition of d.c. applied voltage and ripple voltage shall never exceed the rated d.c. voltage.
3. d.c. and low frequency.
4. Duration 10 seconds maximum at a distance of not less than 2.0mm from the device body and the same lead shall not be resoldered until 3 minutes have elapsed.

**FIGURE 1 - PARAMETER DERATING INFORMATION****Rated Voltage versus Temperature****NOTES**

1. See  $U_{R1}$  Voltage value for each variant on Table 1(a), Column 2(a).
2. See  $U_{R2}$  Voltage value for each variant on Table 1(a), Column 2(b).



**FIGURE 2 - PHYSICAL DIMENSIONS**

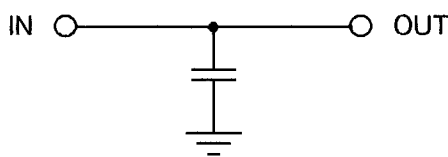




Symbol	Variants 01 to 03		Variants 04 to 06		Notes
	Millimetres		Millimetres		
	Min.	Max.	Min.	Max.	
A	6.90	7.10	6.90	7.10	1, 2 1, 2 Thread  Across flats
B	4.90	5.10	4.90	5.10	
C	7.00	9.00	7.00	9.00	
D	9.00	11.00	9.00	11.00	
E	See Table 1(a)		See Table 1(a)		
Øg	1.50		1.50		
J	-	6.00	-	6.00	
K	-	7.00	-	8.00	
L	-	3.00	-	2.50	
ØM	-	10.20	-	9.40	
N	-	0.60	-	0.40	3

**NOTES**

1. Lead finish shall commence not more than 1.5mm from encapsulant.
2. The terminals are defined as rigid.
3. Internal fan lockwasher

**FIGURE 3 - FUNCTIONAL DIAGRAM**



		<p style="text-align: center;">ESA/SCC Detail Specification No. 3008/026</p>	<p style="text-align: center;">Rev. 'A'</p>	<p>PAGE 9 ISSUE 1</p>
---	---	--	---	---------------------------

#### 4. REQUIREMENTS

##### 4.1 GENERAL

The complete requirements for procurement of the components specified herein are stated in this specification and ESA/SCC Generic Specification No. 3008 for Capacitors and Capacitor Filters, Feedthrough. Deviations from the Generic Specification, applicable to this specification only, are detailed in Para. 4.2.

Deviations from the applicable Generic Specification and this Detail Specification, formally agreed with specific Manufacturers on the basis that the alternative requirements are equivalent to the ESA/SCC requirements and do not affect the components' reliability, are listed in the appendices attached to this specification.

##### 4.2 DEVIATIONS FROM GENERIC SPECIFICATION

###### 4.2.1 Deviations from Special In-process Controls

None.

###### 4.2.2 Deviations from Final Production Tests (Chart II)

(a) Para. 9.7, External Visual Inspection: For variants with a silver plated case, a change of shade is acceptable.

###### 4.2.3 Deviations from Burn-in and Electrical Measurements (Chart III)

(a) Para. 9.7, External Visual Inspection: For variants with a silver plated case, a change of shade is acceptable.

###### 4.2.4 Deviations from Qualification Tests (Chart IV)

(a) Para. 9.7, External Visual Inspection: For variants with a silver plated case, a change of shade is acceptable.

(b) Para. 9.19, Operating Life: At intermediate and final measurements, Insertion Loss shall not be performed.

###### 4.2.5 Deviations from Lot Acceptance Tests (Chart V)

(a) Para. 9.7, External Visual Inspection: For variants with a silver plated case, a change of shade is acceptable.

(b) Para. 9.19, Operating Life: At intermediate and final measurements, Insertion Loss shall not be performed.

##### 4.3 MECHANICAL REQUIREMENTS

###### 4.3.1 Dimension Check

The dimensions of the components specified herein shall be verified in accordance with the requirements set out in Para. 9.5 of ESA/SCC Generic Specification No. 3008 and they shall conform to those shown in Figure 2 of this specification.

###### 4.3.2 Weight

The maximum weight of the components specified herein shall be 5.0 grammes.

###### 4.3.3 Robustness of Terminations

The requirements for the robustness of terminations tests are specified in Section 9 of ESA/SCC Generic Specification No. 3008. The leads are defined as "Rigid".

- Test Ua1, Tensile : The load shall be 20N.



#### 4.3.4 Solderability

The requirements for solderability testing are specified in Section 9 of ESA/SCC Generic Specification No. 3008.

Test Method 1 shall apply and a thermal screen of 1.6mm may be used. The terminal shall be immersed up to the terminal slot which shall be fully filled.

#### 4.3.5 Seal Test

The requirements for seal testing are specified in Section 9 of ESA/SCC Generic Specification No. 3008.

The limit for fine leak shall be  $5.10^{-3}$  Pa.cm<sup>3</sup>/s [ $5.10^{-8}$  bar.cm<sup>3</sup>/s].

### 4.4 MATERIALS AND FINISHES

The materials and finishes shall be as specified herein. Where a definite material is not specified, a material which will enable the components specified herein to meet the performance requirements of this specification shall be used. Acceptance or approval of any constituent material does not guarantee acceptance of the finished product.

#### 4.4.1 Case

The case shall be silver plated brass and hermetically sealed with glass to metal sealing the filter element.

#### 4.4.2 Lead Material and Finish

The lead material shall be Type 'G' with Type '3 or 4' finish in accordance with the requirements of ESA/SCC Basic Specification No. 23500.

#### 4.4.3 Accessories

Nut : As per Figure 2, brass, silver-plated.

Lock-Washer : As per Figure 2, bronze, silver-plated.

### 4.5 MARKING

#### 4.5.1 General

The marking of components delivered to this specification shall be in accordance with the requirements of ESA/SCC Basic Specification No. 21700 and the following paragraphs. When the component is too small to accommodate all of the marking specified, as much as space permits shall be marked and the marking information, in full, shall accompany the component in its primary package.

The information to be marked and the order of precedence, shall be as follows:-

- (a) Lead Identification.
- (b) The SCC Component Number.
- (c) Electrical Characteristics and Ratings.
- (d) Traceability Information.

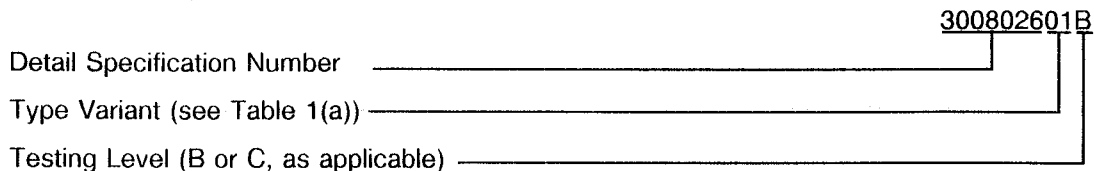


4.5.2 Lead Identification

Not applicable.

4.5.3 The SCC Component Number

The SCC Component Number shall be constituted and marked as follows:-

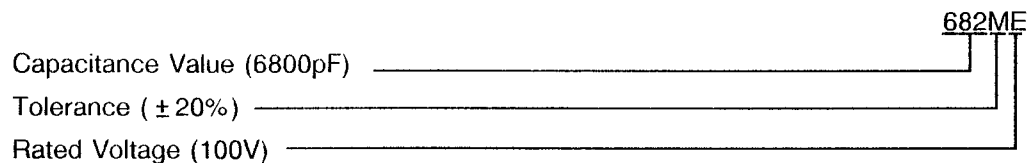


4.5.4 Electrical Characteristics and Ratings

The electrical characteristics and ratings to be marked in the following order of precedence are:-

- (a) Capacitance Value.
- (b) Tolerance.
- (c) Rated Voltage.

The information shall be constituted and marked as follows:-



4.5.4.1 Capacitance Values

The capacitance values shall be expressed by means of the following codes. The unit quantity for marking shall be picofarads (pF).

Capacitance Value (pF)	Code
XX10 <sup>1</sup>	XX1
XX10 <sup>2</sup>	XX2
XX10 <sup>3</sup>	XX3
XX10 <sup>4</sup>	XX4

4.5.4.2 Tolerance

The tolerance on capacitance values shall be indicated by the code letters specified hereafter.

Tolerance ( ± %)	Code Letter
20	M



#### 4.5.4.3 Rated Voltage

The rated voltage shall be indicated by the code letters specified hereafter.

Rated Voltage ( $U_R$ ) (V)	Code Letter
50	C
100	E
200	G

#### 4.5.5 Traceability Information

Each component shall be marked in respect of traceability information in accordance with the requirements of ESA/SCC Basic Specification No. 21700.

#### 4.6 ELECTRICAL MEASUREMENTS

##### 4.6.1 Electrical Measurements at Room Temperature

The parameters to be measured at room temperature are scheduled in Table 2. Unless otherwise specified, measurements shall be performed at  $T_{amb} = +22 \pm 3$  °C.

##### 4.6.2 Electrical Measurements at High and Low Temperatures

The parameters to be measured at high and low temperatures are scheduled in Table 3. Measurements shall be performed at  $T_{amb} = 125(+0 - 5)$  °C and  $-55(+5 - 0)$  °C respectively.

##### 4.6.3 Circuits for Electrical Measurements (Figure 4)

Not applicable.

#### 4.7 BURN-IN TESTS

##### 4.7.1 Parameter Drift Values

The parameter drift values applicable to burn-in are as specified in Table 4 of this specification. Unless otherwise stated, measurements shall be performed at  $T_{amb} = +22 \pm 3$  °C. The parameter drift values ( $\Delta$ ) applicable to the parameters scheduled shall not be exceeded. In addition to these drift value requirements for a given parameter, the appropriate limit values specified in Table 2 shall not be exceeded.

##### 4.7.2 Conditions for Burn-in

The requirements for burn-in are specified in Section 7 of ESA/SCC Generic Specification No. 3008. The conditions for burn-in shall be as specified in Table 5(a) of this specification.

##### 4.7.3 Electrical Circuit for Burn-in (Figure 5)

Not applicable.

**TABLE 2 - ELECTRICAL MEASUREMENTS AT ROOM TEMPERATURE - d.c. PARAMETERS**

No.	Characteristics	Symbol	ESA/SCC 3008 Test Method	Test Conditions	Limits		Unit
					Min	Max	
1	Voltage Drop	$V_{dr}$	Para. 9.4.1.5	$I_R = 10A$	-	0.1	V
2	Voltage Proof	$V_P$	Para. 9.4.1.2	$V = 2.5U_R$	Note 1	-	V
3	Insulation Resistance	$R_i$ $R_i \times C$	Para. 9.4.1.3	$C \leq 25nF$ $C > 25nF$	$10^4$ 250	- -	$M\Omega$ sec

**NOTES**

1. See Column 4 of Table 1(a).

**TABLE 2 - ELECTRICAL MEASUREMENTS AT ROOM TEMPERATURE - a.c. PARAMETERS**

No.	Characteristics	Symbol	ESA/SCC 3008 Test Method	Test Conditions	Limits		Unit
					Min	Max	
4	Insertion Loss	$I_{L1}$	Para. 9.4.1.4	$f = 1.0MHz$ Note 1	Note 2	-	dB
5	Insertion Loss	$I_{L2}$	Para. 9.4.1.4	$f = 10MHz$ Note 1	Note 2	-	dB
6	Insertion Loss	$I_{L3}$	Para. 9.4.1.4	$f = 100MHz$ Note 1	Note 2	-	dB
7	Insertion Loss	$I_{L4}$	Para. 9.4.1.4	$f = 1.0GHz$ Note 1	Note 2	-	dB
8	Insertion Loss	$I_{L5}$	Para. 9.4.1.4	$f = 10GHz$ Note 3	Note 2	-	dB
9	Capacitance	C	Para. 9.4.1.1	Para. 9.4.1.1	Note 4	-	pF

**NOTES**

1. Measurements at rated current to be made only during Chart IV testing in Subgroups II or III. Measurements without load current to be made during Charts II, III and V.
2. See Column 9 of Table 1(a).
3. Measurements at this frequency to be made only during Chart IV testing.
4. See Column 3 of Table 1(a).

**TABLE 3 - ELECTRICAL MEASUREMENTS AT HIGH AND LOW TEMPERATURES**

No.	Characteristics	Symbol	ESA/SCC 3008 Test Method	Test Conditions (Note 1)	Limits		Unit
					Min	Max	
3	Insulation Resistance	R <sub>i</sub> R <sub>i</sub> × C	Para. 9.4.1.3	C ≤ 25nF C > 25nF Note 2	10 <sup>3</sup> 25	- -	MΩ sec
9	Capacitance Change	$\frac{\Delta C}{C}$	Para. 9.4.1.1	Para. 9.4.1.1	- 20	+ 20	% (3)

**NOTES**

1. If more than 20 units have to be measured, the measurement shall be performed on a sample basis in accordance with Inspection Level I, Table IIA, AQL = 1.0% of IEC Publication No. 410.
2. Insulation resistance is to be performed only at high temperature.
3. Relative to the value measured in Table 2.



**FIGURE 4 - CIRCUITS FOR ELECTRICAL MEASUREMENTS**

Not applicable.

**TABLE 4 - PARAMETER DRIFT VALUES**

No.	Characteristics	Symbol	Spec. and/or Test Method	Test Conditions	Change Limits ( $\Delta$ )	Unit
9	Capacitance Change	$\frac{\Delta C}{C}$	As per Table 2	As per Table 2	$\pm 10$	%

**TABLE 5(a) - CONDITIONS FOR BURN-IN TESTS**

No.	Characteristic	Symbol	Condition	Unit
1	Ambient Temperature	$T_{amb}$	+ 125(+ 0 - 3)	$^{\circ}\text{C}$
2	Test Voltage	$V_T$	$2 \times U_R$ at + 125 $^{\circ}\text{C}$ Note 1	V

**NOTES**

1. Applied between one terminal and the case. See Column 2(b) of Table 1(a) for value of  $U_R$ .

**TABLE 5(b) - CONDITIONS FOR OPERATING LIFE TESTS**

No.	Characteristic	Symbol	Condition	Unit
1	Ambient Temperature	$T_{amb}$	+ 125(+ 0 - 3)	$^{\circ}\text{C}$
2	Test Voltage	$V_T$	$2 \times U_R$ at + 125 $^{\circ}\text{C}$ Note 1	V
3	Rated Current	$I_R$	10 Note 2	A

**NOTES**

1. Applied between one terminal and the case. See Column 2(b) of Table 1(a) for value of  $U_R$ .
2. To flow between the terminals.

**FIGURE 5 - ELECTRICAL CIRCUIT FOR BURN-IN AND OPERATING LIFE TESTS**

Not applicable.



- 4.8 ENVIRONMENTAL AND ENDURANCE TESTS (CHARTS IV AND V OF ESA/SCC GENERIC SPECIFICATION No. 3008)
- 4.8.1 Measurements and Inspections on Completion of Environmental Tests  
The parameters to be measured and inspections to be performed on completion of environmental tests are scheduled in Table 6. Unless otherwise stated, the measurements shall be performed at  $T_{amb} = +22 \pm 3$  °C.
- 4.8.2 Measurements and Inspections at Intermediate Points During Endurance Tests  
The parameters to be measured and inspections to be performed at intermediate points during endurance tests are scheduled in Table 6. Unless otherwise stated, the measurements shall be performed at  $T_{amb} = +22 \pm 3$  °C.
- 4.8.3 Measurements and Inspections on Completion of Endurance Tests  
The parameters to be measured and inspections to be performed on completion of endurance testing are as scheduled in Table 6. Unless otherwise stated, the measurements shall be performed at  $T_{amb} = +22 \pm 3$  °C.
- 4.8.4 Conditions for Operating Life Tests (Part of Endurance Testing)  
The requirements for operating life test are specified in Section 9 of ESA/SCC Generic Specification No. 3008. The conditions for operating life testing shall be as specified in Table 5(b) of this specification.
- 4.8.5 Electrical Circuit for Operating Life Tests (Figure 5)  
Not applicable.



**SCC**

ESA/SCC Detail Specification  
No. 3008/026

PAGE 17

ISSUE 1

**TABLE 6 - MEASUREMENTS AND INSPECTIONS ON COMPLETION OF ENVIRONMENTAL TESTS AND AT INTERMEDIATE POINTS AND ON COMPLETION OF ENDURANCE TESTING**

NO.	ESA/SCC GENERIC SPEC. NO. 3008		MEASUREMENTS AND INSPECTIONS		SYMBOL	LIMITS		UNIT
	ENVIRONMENTAL AND ENDURANCE TESTS (1)	TEST METHOD AND CONDITIONS	IDENTIFICATION	CONDITIONS		MIN.	MAX.	
01	Seal Test (Hermetically Sealed)	Para. 9.6 and Para. 4.3.5 of this spec.	Gross Leak Fine Leak	ESA/SCC No. 3008 Para. 9.6.1 ESA/SCC No. 3008 Para. 9.6.2	- -	- -	- -	
02	External Visual Inspection	Para. 9.7 and Paras 4.2.4 and 4.2.5 of this spec.	<b>Final Measurements</b> Visual Inspection	ESA/SCC No. 20500	-	-	-	
03	Temperature Rise	Para. 9.9	Temperature Rise	Rated Current (3)	-	-	25	°C
04	Shock	Para. 9.10	<b>Measurements during Tests</b>  <b>Final Measurements</b> Visual Examination Insertion Loss	100% U <sub>R</sub> (2) applied No Open or Short Circuits > 0.1ms  No Mechanical Damage Table 2 Items 4 to 8	- I <sub>L</sub>	- Table 2	- -	
05	Vibration	Para. 9.11	<b>Measurements during Tests</b> During Last Cycle  <b>Final Measurements</b> Visual Examination Insertion Loss	Rated Current (3) and 100% U <sub>R</sub> (2) applied No Open or Short Circuits > 0.1ms  No Mechanical Damage Table 2 Items 4 to 8	- I <sub>L</sub>	- Table 2	- -	
06	Accelerated Damp Heat	Before tests, 10 cycles of Para. 9.2 Para. 9.12	<b>Final Measurements</b> Visual Examination Voltage Proof Insulation Resistance Insertion Loss	After recovery of 4 to 24 hrs No corrosion or obliteration of marking Table 2 Item 2  Table 2 Item 3 Table 2 Items 4 to 8	- VP R <sub>i</sub> I <sub>L</sub>	- 90% U <sub>R</sub> (2) (4) Table 2	- - - -	
07	Low Air Pressure	Para. 9.13	<b>Measurements during Tests</b> Voltage Proof  Visual Examination  <b>Final Measurements</b> Visual Examination	During last 5 minutes Table 2 Item 2  No breakdown, flashover, deformation or seepage  No breakdown, flashover, deformation or seepage	VP - -	125% U <sub>R</sub> (2) -	- - -	
08	Robustness of Terminations	Para. 9.14 and Para. 4.3.3 of this spec.	<b>Final Measurements</b> Visual Examination Voltage Drop	No damage Table 2 Item 1	- V <sub>dr</sub>	- -	- Table 2	

**NOTES**

1. The tests in this Table refer to either Chart IV or V and shall be used as applicable.
2. For U<sub>R</sub>, see Column 2(a) of Table 1(a).
3. For I<sub>R</sub>, see Column 7 of Table 1(a).
4. Greater than 10% of the value given in Table 2.
5. Greater than 50% of the value given in Table 2.



**TABLE 6 - MEASUREMENTS AND INSPECTIONS ON COMPLETION OF ENVIRONMENTAL TESTS AND AT INTERMEDIATE POINTS AND ON COMPLETION OF ENDURANCE TESTING (CONT'D)**

NO.	ESA/SCC GENERIC SPEC. NO. 3008		MEASUREMENTS AND INSPECTIONS		SYMBOL	LIMITS		UNIT
	ENVIRONMENTAL AND ENDURANCE TESTS (1)	TEST METHOD AND CONDITIONS	IDENTIFICATION	CONDITIONS		MIN.	MAX.	
09	Immersion	Before tests, 10 cycles of Para. 9.2 Para. 9.15	<b>Final Measurements</b> Visual Examination  Voltage Proof  Insulation Resistance Insertion Loss	After recovery of 4 to 24 hrs No obliteration of marking and harmful corrosion Table 2 Item 2  Table 2 Item 3 Table 2 Items 4 to 8	-  VP  Ri I <sub>L</sub>	-  90% U <sub>R</sub> (2) (4) Table 2	-  -  -	
10	Overload	Para. 9.16	<b>Final Measurements</b> Insulation Resistance Voltage Drop Visual Examination	140% of Rated Current (3) for 15 mins min.  Table 2 Item 3 Table 2 Item 1 No damage	Ri V <sub>dr</sub> -	Table 2 - -	- Table 2 -	
11	Resistance to Soldering Heat	Para. 9.17	<b>Final Measurements</b> Visual Examination Insulation Resistance Insertion Loss	After recovery of 1 to 2 hrs No damage Table 2 Item 3 Table 2 Items 4 to 8	-  Ri I <sub>L</sub>	-  Table 2 Table 2	-  -  -	
12	Solderability	Para. 9.18 and Para. 4.3.4 of this spec.	<b>Final Measurements</b> Visual Examination	IEC No. 68-2-20 Para. 4.6.4, 4.7.4 or 4.9.3	-	-	-	
13	Operating Life	Para. 9.19	<b>Initial Measurements</b> Capacitance <b>During Tests</b>  <b>Intermediate Measurements</b> Insulation Resistance  Voltage Proof  Insulation Resistance Capacitance Change <b>Final Measurements</b> Insulation Resistance  Voltage Proof  Insulation Resistance Capacitance Change	Table 2 Item 9 No Open or Short Circuit   Table 3 Item 3 After 24 hrs recovery Table 2 Item 2  Table 2 Item 3 Table 2 Item 9  Table 3 Item 3 After 24 hrs recovery Table 2 Item 2  Table 2 Item 3 Table 2 Item 9	C -  Ri VP  Ri ΔC/C  Ri VP  Ri ΔC/C	Record values -  Table 3  90% U <sub>R</sub> (2) (5) - Table 4  90% U <sub>R</sub> (2) (5) - Table 4	-  -  -  -  -  -	
14	Corrosion	Para. 9.20	<b>Final Measurements</b> Visual Examination	No corrosion, damage or obliteration of marking	-	-	-	
15	Permanence of Marking	Para. 9.21	<b>Final Measurements</b> Visual Examination	No corrosion or obliteration of marking	-	-	-	
16	Damp Heat (Non-hermetically Sealed)	Para. 9.24	Not applicable.					

**NOTES:** See Page 17.

**SCC**ESA/SCC Detail Specification  
No. 3008/026

PAGE 19

ISSUE 1

**APPENDIX 'A'**Page 1 of 1**AGREED DEVIATIONS FOR EUROFARAD (F)**

ITEMS AFFECTED	DESCRIPTION OF DEVIATIONS
Paras. 4.2.2 and 4.2.3	(a) Para. 9.4.1.5, Voltage Drop: Voltage Drop may be performed as a d.c. Resistance measurement in accordance with MIL-STD-202, Method 303. In this case, the maximum value of d.c. Resistance (Rs) shall be as specified in Column 6 of Table 1(a).