



**CAPACITORS, FIXED, TUBULAR,  
POROUS TANTALUM CATHODE AND ANODE,  
GELLED ELECTROLYTE, HERMETICALLY SEALED**

**BASED ON TYPES ST79**

**ESCC Detail Specification No. 3003/006**

Issue 4	October 2020
---------	--------------



### **LEGAL DISCLAIMER AND COPYRIGHT**

European Space Agency, Copyright © 2020 All rights reserved.

The European Space Agency disclaims any liability or responsibility, to any person or entity, with respect to any loss or damage caused, or alleged to be caused, directly or indirectly by the use and application of this ESCC publication.

This publication, without the prior permission of the European Space Agency and provided that it is not used for a commercial purpose, may be:

- copied in whole, in any medium, without alteration or modification.
- copied in part, in any medium, provided that the ESCC document identification, comprising the ESCC symbol, document number and document issue, is removed.

**DOCUMENTATION CHANGE NOTICE**

(Refer to <https://escies.org> for ESCC DCR content)

DCR No.	CHANGE DESCRIPTION
1357	Specification updated to incorporate changes per DCR.

**TABLE OF CONTENTS**

1	GENERAL	5
1.1	SCOPE	5
1.2	APPLICABLE DOCUMENTS	5
1.3	TERMS, DEFINITIONS, ABBREVIATIONS, SYMBOLS AND UNITS	5
1.4	THE ESCC COMPONENT NUMBER AND COMPONENT TYPE VARIANTS	5
1.4.1	The ESCC Component Number	5
1.4.2	Component Type Variants and Range of Components	6
1.5	MAXIMUM RATINGS	8
1.6	PHYSICAL DIMENSIONS AND TERMINAL IDENTIFICATION	8
1.7	FUNCTIONAL DIAGRAM	9
1.8	MATERIALS AND FINISHES	9
1.8.1	Case	9
1.8.2	Terminal Material and Finish	9
1.8.3	Body Insulation Sleeving	9
2	REQUIREMENTS	9
2.1	GENERAL	9
2.1.1	Deviations from the Generic Specification	9
2.2	MARKING	9
2.3	ELECTRICAL MEASUREMENTS AT ROOM, HIGH AND LOW TEMPERATURES	10
2.3.1	Room Temperature Electrical Measurements	10
2.3.2	High and Low Temperatures Electrical Measurements	10
2.4	INTERMEDIATE AND END-POINT ELECTRICAL MEASUREMENTS	11

**1 GENERAL**

**1.1 SCOPE**

This specification details the ratings, physical and electrical characteristics, and test and inspection data for the component type variants and/or the range of components specified below. It supplements the requirements of, and shall be read in conjunction with, the ESCC Generic Specification listed under Applicable Documents.

**1.2 APPLICABLE DOCUMENTS**

The following documents form part of this specification and shall be read in conjunction with it:

- (a) ESCC Generic Specification No. [3003](#).

**1.3 TERMS, DEFINITIONS, ABBREVIATIONS, SYMBOLS AND UNITS**

For the purpose of this specification, the terms, definitions, abbreviations, symbols and units specified in ESCC Basic Specification No. [21300](#) shall apply.

**1.4 THE ESCC COMPONENT NUMBER AND COMPONENT TYPE VARIANTS**

**1.4.1 The ESCC Component Number**

The ESCC Component Number shall be constituted as follows:

Example: 300300605567KM

- Detail Specification Reference: 3003006
- Component Type Variant Number: 05 (as required)
- Characteristic code: Rated Capacitance (560µF): 567 (as required)
- Characteristic code: Capacitance Tolerance (±10%): K (as required)
- Rating code: DC Rated Voltage (60V): M (as required)

**1.4.1.1 Characteristics and Ratings Codes**

Characteristics and ratings to be codified as part of the ESCC Component Number shall be as follows:

- (a) Rated Capacitance,  $C_n$ , expressed by means of the following codes in accordance with ESCC Basic Specification No. [21700](#). The unit quantity shall be picofarad (pF).

Rated Capacitance $C_n$ (pF)	Code
XX 10 <sup>6</sup>	XX6
XX 10 <sup>7</sup>	XX7
XX 10 <sup>8</sup>	XX8

- (b) Capacitance Tolerance expressed by the following codes in accordance with ESCC Basic Specification No. [21700](#):

Tolerance (± %)	Code
10	K
20	M

(c) DC Rated Voltage,  $U_R$ , expressed by the following codes:

DC Rated Voltage $U_R$ (V)	Code
25	F
30	H
40	J
50	K
60	M
63	L
75	P
100	Q
125	R

1.4.2 Component Type Variants and Range of Components

The component type variants and range of components applicable to this specification are as follows:

Variant Number	Case Size (Notes 1, 2)	Capacitance Range $C_n$ ( $\mu F$ ) (Notes 2, 3)	DC Rated Voltage $U_R$ (V) (Note 2)	Weight Max (g)
02	A	10 to 120	25 to 125	2.6
03	B	47 to 560	25 to 125	6.2
04	C	100 to 1200	25 to 125	11.6
05	D	150 to 1800	25 to 125	17.7

**NOTES:**

- See Para. 1.6.
- The following DC Rated Voltage ( $U_R$ ), Rated Capacitance ( $C_n$ ) and case sizes are available. Electrical characteristics for each component type are as specified below:

$U_R$ (V)	$C_n$ ( $\mu F$ ) at 100Hz	Case Size	$I_L$ max ( $\mu A$ ) at $T_{amb} =$		DF max at 100Hz (%) at $T_{amb} =$	$\Delta C_n/C_n$ (%) at 100Hz at $T_{amb} =$			Z max ( $\Omega$ ) at 100Hz
			+22°C	+85 & +125°C		+22, +85 & +125°C	+85°C	+125°C	
25	120	A	1	5	14	+8	+12	-42	30
25	560	B	2	10	42	+10	+15	-65	12
25	1200	C	5	20	70	+12	+18	-70	7
25	1800	D	4	25	81	+12	+20	-75	6
30	100	A	1	5	11	+8	+12	-38	35
30	470	B	2	10	36	+10	+18	-65	15
30	1000	C	7	25	63	+10	+18	-70	7
30	1500	D	5	30	81	+10	+20	-72	7
40	1000	D	8	65	40	+10	+20	-60	8

U <sub>R</sub> (V)	C <sub>n</sub> (μF) at 100Hz	Case Size	I <sub>L</sub> max (μA) at T <sub>amb</sub> =		DF max at 100Hz (%) at T <sub>amb</sub> =	ΔC <sub>n</sub> /C <sub>n</sub> (%) at 100Hz at T <sub>amb</sub> =			Z max (Ω) at 100Hz
			+22°C	+85 & +125°C		+85°C	+125°C	-55°C	
50	68	A	1	5	9	+8	+15	-25	40
50	220	B	2	10	18	+8	+15	-50	20
50	470	C	3	25	31	+8	+15	-50	10
50	680	D	5	40	43	+10	+20	-60	8
50	750	D	6	55	40	+10	+20	-60	8
60	47	A	1	5	9	+8	+12	-25	60
60	150	B	2	10	15	+8	+15	-40	25
60	390	C	3	25	31	+8	+15	-50	13
60	560	D	5	40	40	+8	+15	-60	8
60	700	D	7	60	42	+10	+20	-60	8
63	500	D	5	40	40	+8	+15	-60	8
75	33	A	1	5	8	+5	+9	-25	85
75	330	C	3	30	29	+10	+20	-50	12
75	470	D	5	50	38	+10	+20	-60	10
100	15	A	1	5	5	+3	+10	-18	165
100	68	B	2	10	12	+4	+12	-30	45
100	150	C	3	25	21	+6	+12	-38	22
100	220	D	5	50	23	+6	+12	-50	18
125	10	A	1	5	5	+3	+10	-15	240
125	47	B	2	10	10	+5	+12	-25	60
125	100	C	3	25	16	+5	+10	-25	35
125	150	D	5	50	21	+6	+12	-35	22

3. The following capacitance tolerances are available:
- ±10% (K)
  - ±20% (M)

1.5 MAXIMUM RATINGS

The maximum ratings shall not be exceeded at any time during use or storage.

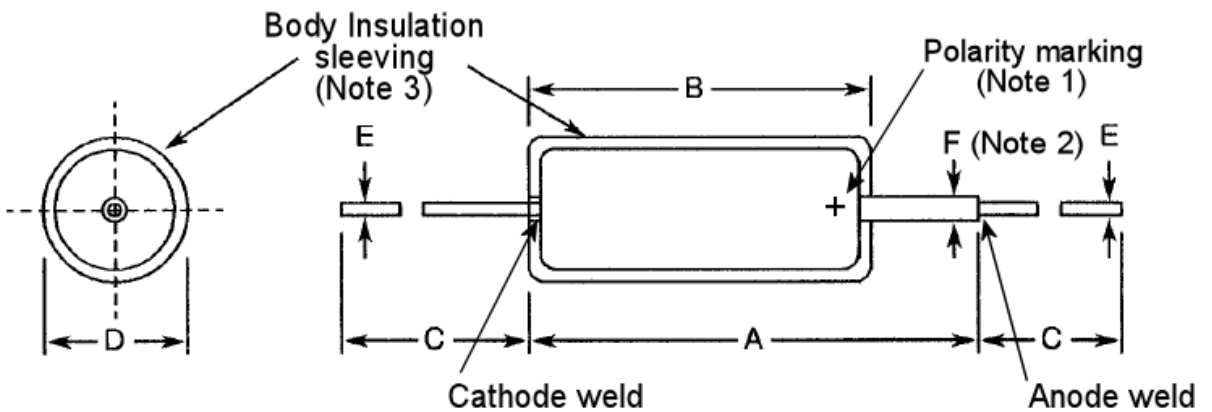
Maximum ratings shall only be exceeded during testing to the extent specified in this specification and when stipulated in Test Methods and Procedures of the ESCC Generic Specification.

Characteristics	Symbols	Maximum Ratings	Units	Remarks
DC Rated Voltage	$U_R$	See Para. 1.4.2	V	Note 1
DC Surge Voltage	$U_S$	$1.15 \times U_R$	V	$T_{amb} \leq +85^\circ\text{C}$
DC Category Voltage	$U_C$	$0.67 \times U_R$	V	
Operating Temperature Range	$T_{op}$	-55 to +125	$^\circ\text{C}$	$T_{amb}$
Rated Temperature	$T_R$	+85	$^\circ\text{C}$	
Upper Category Temperature	$T_C$	+125	$^\circ\text{C}$	
Storage Temperature Range	$T_{stg}$	-55 to +125	$^\circ\text{C}$	
Soldering Temperature	$T_{sol}$	+260	$^\circ\text{C}$	Note 2

**NOTES:**

- At  $T_{amb} \leq +85^\circ\text{C}$ . For  $T_{amb} > +85^\circ\text{C}$ , derate linearly to  $U_C$  at  $T_{amb} = +125^\circ\text{C}$ .
- Duration 5 seconds maximum  $\geq 3\text{mm}$  from body on the cathode side and  $\geq 3\text{mm}$  from weld on the anode side.

1.6 PHYSICAL DIMENSIONS AND TERMINAL IDENTIFICATION



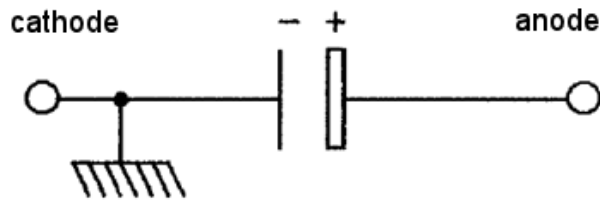
Variant Number	Case Size	Dimensions (mm)						
		A Max	B Max	C Min	D Max	E		F Max
						Min	Max	
02	A	18	12.43	30	5.6	0.59	0.7	1.6
03	B	23	17.2	30	7.6	0.59	0.7	1.6
04	C	26	20.4	30	10	0.59	0.7	1.6
05	D	34	27.9	30	10	0.59	0.7	1.6

**NOTES:**

- Terminal identification: a '+' symbol shall be marked on the body at the anode end.
- The anode lead-out stub must not be bent.
- See Para. 1.8.3.



## 1.7 FUNCTIONAL DIAGRAM



## 1.8 MATERIALS AND FINISHES

### 1.8.1 Case

Tantalum, hermetically sealed.

### 1.8.2 Terminal Material and Finish

Terminal material and finish shall be type E3 in accordance with the requirements of ESCC Basic Specification No. [23500](#). Leads shall be electrically welded to the case.

### 1.8.3 Body Insulation Sleeving

Body insulation sleeving shall be of a non-fungus nutrient material (cardboard shall not be used). The material shall not soften, creep or shrink to the extent that it causes any part of the cylindrical case to become uncovered at any test temperature specified herein. At any cross-section, the maximum thickness of the sleeving shall not exceed twice the minimum thickness.

## 2 REQUIREMENTS

### 2.1 GENERAL

The complete requirements for procurement of the components specified herein are as stated in this specification and the ESCC Generic Specification. Permitted deviations from the Generic Specification, applicable to this specification only, are listed below.

Permitted deviations from the Generic Specification and this Detail Specification, formally agreed with specific Manufacturers on the basis that the alternative requirements are equivalent to the ESCC requirement and do not affect the component's reliability, are listed in the appendices attached to this specification.

#### 2.1.1 Deviations from the Generic Specification

None.

### 2.2 MARKING

The marking shall be in accordance with the requirements of ESCC Basic Specification No. [21700](#) and as follows.

The information to be marked on the component or its primary package shall be:

- (a) Terminal identification (polarity) (see Para. 1.6).
- (b) The ESCC qualified components symbol (for ESCC qualified components only).
- (c) The ESCC Component Number (see Para. 1.4.1).
- (d) Traceability information.

2.3 ELECTRICAL MEASUREMENTS AT ROOM, HIGH AND LOW TEMPERATURES

Electrical measurements shall be performed at room, high and low temperatures.

2.3.1 Room Temperature Electrical Measurements

The measurements shall be performed at  $T_{amb} = +22 \pm 3^{\circ}\text{C}$ .

Test Step	Characteristics	Symbols	Test Method and Conditions (Note 1)	Tolerance	Limits		Units
					Min	Max	
1	DC Leakage Current	$I_L$	ESCC No. 3003 $V = U_R$	All	-	Note 2	$\mu\text{A}$
2	Capacitance	$C_A$	ESCC No. 3003 $f = 100\text{Hz}$	$\pm 10\%$ $\pm 20\%$	$0.9C_n$ $0.8C_n$	$1.1C_n$ $1.2C_n$	$\mu\text{F}$
3	Dissipation Factor	DF	ESCC No. 3003 $f = 100\text{Hz}$	All	-	Note 2	%

**NOTES:**

- Measurements shall be made in the order shown. On completion of electrical measurements, all capacitors shall be discharged through  $470\Omega$  resistors for 5s followed by short circuit for 2 minutes.
- See Para. 1.4.2 Note 2 for characteristic limits.

2.3.2 High and Low Temperatures Electrical Measurements

Test Step	Characteristics	Symbols	Test Method and Conditions (Notes 1, 2)	Tolerance	Limits		Units
					Min	Max	
1	Impedance	Z	IEC 60384-1 Para. 4.10 $T_{amb} = -55 (+5 -0)^{\circ}\text{C}$ $f = 100\text{Hz}$	All	-	Note 3	$\Omega$
2	Capacitance	$C_A$	ESCC No. 3003 $T_{amb} = -55 (+5 -0)^{\circ}\text{C}$ $f = 100\text{Hz}$	$\pm 10\%$ $\pm 20\%$	Note 4 Note 4	Note 4 Note 4	$\mu\text{F}$
3	DC Leakage Current	$I_L$	ESCC No. 3003 $T_{amb} = +85 \pm 3^{\circ}\text{C}$ $V = U_R$	All	-	Note 3	$\mu\text{A}$
4	Capacitance	$C_A$	ESCC No. 3003 $T_{amb} = +85 \pm 3^{\circ}\text{C}$ $f = 100\text{Hz}$	$\pm 10\%$ $\pm 20\%$	Note 4 Note 4	Note 4 Note 4	$\mu\text{F}$
5	Dissipation Factor	DF	ESCC No. 3003 $T_{amb} = +85 \pm 3^{\circ}\text{C}$ $f = 100\text{Hz}$	All	-	Note 3	%
6	DC Leakage Current	$I_L$	ESCC No. 3003 $T_{amb} = +125 (+0 -5)^{\circ}\text{C}$ $V = U_c$	All	-	Note 3	$\mu\text{A}$
7	Capacitance	$C_A$	ESCC No. 3003 $T_{amb} = +125 (+0 -5)^{\circ}\text{C}$ $f = 100\text{Hz}$	$\pm 10\%$ $\pm 20\%$	Note 4 Note 4	Note 4 Note 4	$\mu\text{F}$
8	Dissipation Factor	DF	ESCC No. 3003 $T_{amb} = +125 (+0 -5)^{\circ}\text{C}$ $f = 100\text{Hz}$	All	-	Note 3	%

**NOTES:**

1. Measurements shall be made in the order shown. On completion of electrical measurements, all capacitors shall be discharged through 470Ω resistors for 5 seconds followed by short circuit for 2 minutes.
2. The measurements shall be performed on a sample of 5 components from each manufacturing lot with 0 failures allowed. In the event of any failure a 100% inspection may be performed. Measurements shall be made in the order shown.
3. See Para.1.4.2 Note 2 for characteristic limits at the applicable test temperature.
4. Capacitance limits shall be as specified in Para. 2.3.1 with  $\Delta C_n/C_n$  adjustment as specified in Para. 1.4.2 Note 2 at the applicable test temperature.

2.4 **INTERMEDIATE AND END-POINT ELECTRICAL MEASUREMENTS**

Unless otherwise specified, the measurements shall be performed at  $T_{amb} = +22 \pm 3^\circ C$ .

Unless otherwise specified the test methods and test conditions shall be as per the corresponding test defined in Para. 2.3.1 Room Temperature electrical Measurements.

Test Reference per ESCC No. 3003	Characteristics	Symbols	Limits		Units
			Min	Max	
Rapid Change of Temperature Initial Measurements	Capacitance	$C_A$	Note 1		$\mu F$
Final Measurements	DC Leakage Current	$I_L$	-	Note 2	$\mu A$
	Capacitance	$C_A$	Record Value		$\mu F$
	Capacitance Change	$\Delta C/C$	-15	+15	%
	Dissipation Factor	DF	-	Note 3	%
Vibration During last 30 mins in each axis	No intermittent contact or open/short circuits $\geq 0.5ms$	-	-	-	-
Mechanical Shock During testing	No intermittent contact or open/short circuits $\geq 0.5ms$	-	-	-	-
Climatic Sequence Initial Measurements	DC Leakage Current	$I_L$	Record Value		$\mu A$
	Capacitance	$C_A$	Record Value		$\mu F$
	Dissipation Factor	DF	Record Value		%
Final Measurements	DC Leakage Current	$I_L$	-	Note 2	$\mu A$
	Capacitance	$C_A$	Record Value		$\mu F$
	Capacitance Change	$\Delta C/C$	-15	+15	%
	Dissipation Factor	DF	-	Note 3	%
Damp Heat, Steady State Initial Measurements	Capacitance	$C_A$	Record Value		$\mu F$
	Final Measurements	DC Leakage Current	-	Note 4	$\mu A$
Final Measurements	Capacitance	$C_A$	Record Value		$\mu F$
	Capacitance Change	$\Delta C/C$	-10	+10	%
	Dissipation Factor	DF	-	Note 3	%
	Voltage Proof	VP	1000		Vdc
	Insulation Resistance	RI	100	-	$M\Omega$

Test Reference per ESCC No. 3003	Characteristics	Symbols	Limits		Units
			Min	Max	
Cold Final Measurements	DC Leakage Current	I <sub>L</sub>	-	Note 4	μA
	Capacitance	C <sub>A</sub>	Record Value		μF
	Capacitance Change	ΔC/C	-5	+5	% (5)
	Dissipation Factor	DF	-	Note 3	%
Reverse Voltage Initial Measurements	Capacitance	C <sub>A</sub>	Record Value		μF
Final Measurements	DC Leakage Current	I <sub>L</sub>	-	Note 4	μA
	Capacitance	C <sub>A</sub>	Record Value		μF
	Capacitance Change	ΔC/C	-10	+10	%
	Dissipation Factor	DF	-	Note 3	%
Operating Life Initial Measurements	Capacitance	C <sub>A</sub>	Note 1		μF
Intermediate Measurements (500h and 1000h (Note 6))	DC Leakage Current	I <sub>L</sub>	-	Note 4	μA
	Capacitance	C <sub>A</sub>	Record Value		μF
	Capacitance Change	ΔC/C	-10	+10	%
	Dissipation Factor	DF	-	Note 3	%
Final Measurements (1000h or 2000h) (Note 7)	DC Leakage Current	I <sub>L</sub>	-	Note 2	μA
	Capacitance	C <sub>A</sub>	Record Value		μF
	Capacitance Change	ΔC/C	-10	+10	%
	Dissipation Factor	DF	-	Note 3	%
	Voltage Proof	VP	1000		Vdc
	Insulation Resistance	R <sub>I</sub>	100	-	MΩ

**NOTES:**

- As specified in Para. 2.3.1.
- 2.5 times the limit specified in Para. 2.3.1.
- 1.5 times the limit specified in Para. 2.3.1.
- 2 times the limit specified in Para. 2.3.1.
- Related to final Capacitance measurements from Damp Heat, Steady State.
- 1000 hour intermediate measurements are applicable when a 2000 hour test is being performed.
- 1000 hours is applicable to Periodic Testing for extension of qualification. 2000 hours is applicable to Qualification Testing, and to Periodic Testing for renewal of qualification after lapse.