



**CAPACITORS, LEADLESS SURFACE MOUNTED,  
TANTALUM, SOLID ELECTROLYTE**

**BASED ON TYPE CTC21E**

**ESCC Detail Specification No. 3012/003**

Issue 4	July 2016
---------	-----------



### **LEGAL DISCLAIMER AND COPYRIGHT**

European Space Agency, Copyright © 2016. All rights reserved.

The European Space Agency disclaims any liability or responsibility, to any person or entity, with respect to any loss or damage caused, or alleged to be caused, directly or indirectly by the use and application of this ESCC publication.

This publication, without the prior permission of the European Space Agency and provided that it is not used for a commercial purpose, may be:

- copied in whole, in any medium, without alteration or modification.
- copied in part, in any medium, provided that the ESCC document identification, comprising the ESCC symbol, document number and document issue, is removed.

**DOCUMENTATION CHANGE NOTICE**

(Refer to <https://escies.org> for ESCC DCR content)

DCR No.	CHANGE DESCRIPTION
1004	Specification upissued to incorporate editorial changes per DCR.

**TABLE OF CONTENTS**

1	GENERAL	6
1.1	SCOPE	6
1.2	RANGE OF COMPONENTS AND TYPE VARIANTS	6
1.3	MAXIMUM RATINGS	6
1.4	PARAMETER DERATING INFORMATION	6
1.5	PHYSICAL DIMENSIONS	6
1.6	FUNCTIONAL DIAGRAM	6
2	APPLICABLE DOCUMENTS	6
3	TERMS, DEFINITIONS, ABBREVIATIONS, SYMBOLS AND UNITS	6
4	REQUIREMENTS	11
4.1	GENERAL	11
4.2	DEVIATIONS FROM GENERIC SPECIFICATION	11
4.2.1	Deviations from Special In-process Controls	11
4.2.2	Deviations from Final Production Tests (Chart II)	11
4.2.3	Deviations from Burn-in and Electrical Measurements (Chart III)	11
4.2.4	Deviations from Qualification Tests (Chart IV)	11
4.2.5	Deviations from Lot Acceptance Tests (Chart V)	11
4.3	MECHANICAL REQUIREMENTS	12
4.3.1	Dimension Check	12
4.3.2	Weight	12
4.3.3	Adhesion	12
4.4	MATERIALS AND FINISHES	12
4.4.1	Case	12
4.4.2	Termination Material and Finish	12
4.5	MARKING	12
4.5.1	General	12
4.5.2	Polarity	12
4.5.3	The ESCC Component Number	13
4.5.4	Electrical Characteristics and Ratings	13
4.5.4.1	CAPACITANCE VALUES	13
4.5.4.2	TOLERANCE	13
4.5.4.3	RATED VOLTAGE	14
4.5.5	Traceability Information	14
4.6	ELECTRICAL MEASUREMENTS	14
4.6.1	Electrical Measurements at Room Temperature	14
4.6.2	Electrical Measurements at High and Low Temperatures	14
4.6.3	Circuits for Electrical Measurements (Figure 4)	14

4.7	BURN-IN TESTS	14
4.7.1	Parameter Drift Values	14
4.7.2	Conditions for Burn-in	14
4.7.3	Electrical Circuit for Burn-in (Figure 5)	14
4.8	ENVIRONMENTAL AND ENDURANCE TESTS (CHARTS IV AND V OF ESCC GENERIC SPECIFICATION NO. 3012)	17
4.8.1	Measurements and Inspections on Completion of Environmental Tests	17
4.8.2	Measurements and Inspections at Intermediate Points during Endurance Tests	17
4.8.3	Measurements and Inspections on Completion of Endurance Tests	17
4.8.4	Conditions for Operating Life Tests (Part of Endurance Testing)	17
4.8.5	Electrical Circuit for Operating Life Tests (Figure 5)	17
	Table 2 – Electrical Measurements at Room Temperature	15
	Table 3 – Electrical Measurements at High and Low Measurement	15
	Table 4 – Parameter Drift Values	16
	Table 5 – Conditions for Burn-in and Operating Life Tests	16
	Table 6 – Measurements and Inspections On Completion of Environmental Tests And at Intermediate Points and on Completion of Endurance Testing	17
	Figure 1 – Parameter Derating Information	9
	Figure 2 – Physical Dimensions	10
	Figure 3 – Functional Diagram	10
	Figure 4 – Circuits for electrical Measurements	16
	Figure 5 – Electrical Circuit for Burn-in and Operating Life Tests	16

## 1 **GENERAL**

### 1.1 **SCOPE**

This specification details the ratings, physical and electrical characteristics, test and inspection data for Capacitors, Leadless Surface Mounted, Tantalum, Solid Electrolyte, based on Type CTC21E. It shall be read in conjunction with ESCC Generic Specification No. 3012, the requirements of which are supplemented herein.

### 1.2 **RANGE OF COMPONENTS AND TYPE VARIANTS**

The range of capacitors covered by this specification is given in Table 1(a) and the Type Variants are given in Para. 4.4.2.

### 1.3 **MAXIMUM RATINGS**

The maximum ratings, which shall not be exceeded at any time during use or storage, applicable to the capacitors specified herein, are as scheduled in Table 1(b).

### 1.4 **PARAMETER DERATING INFORMATION**

The parameter derating information applicable to the capacitors specified herein is shown in Figure 1.

### 1.5 **PHYSICAL DIMENSIONS**

The physical dimensions of the capacitors specified herein are shown in Figure 2.

### 1.6 **FUNCTIONAL DIAGRAM**

The functional diagram of the capacitors specified herein is shown in Figure 3.

## 2 **APPLICABLE DOCUMENTS**

The following documents form part of this specification and shall be read in conjunction with it:

- (a) ESCC Generic Specification No. 3012 for Capacitors, Leadless Surface Mounted, Tantalum, Solid Electrolyte, Enclosed Anode Connection.

## 3 **TERMS, DEFINITIONS, ABBREVIATIONS, SYMBOLS AND UNITS**

For the purpose of this specification, the terms, definitions, abbreviations, symbols and units specified in ESCC Basic Specification No. 21300 shall apply. In addition, the following symbols are used:

$V_T$  = Test Voltage.



**TABLE 1(a) - RANGE OF COMPONENTS**

(1) Rated Voltage (U <sub>R</sub> ) (V)	(2) Capacitance Value (C) (μF)	(3) Tolerance  (± %)	DC Leakage Current (I <sub>L</sub> )			Dissipation Factor (DF)			(10) ESR max 500kHz +25°C (mΩ)	(11) Ripple Current 500kHz +25°C (max) (1) (A)	(12) Ripple Current 1.0kHz +25°C (max) (1) (A)	(13) Case Size	(14) Max. Weight (g)
			(4) +25°C (μA)	(5) +85°C (μA)	(6) +125°C (μA)	(7) -55°C (%)	(8) +25°C (%)	(9) +85°C and +125°C (%)					
6.3	270	10, 20	17	170	212	32	16	24	45	2.9	2	C	2
6.3	330	10, 20	20.8	208	260	40	20	30	45	2.9	2	C	2
6.3	560	10, 20	35.3	353	441	48	24	36	35	3.6	2.5	D	3.6
6.3	680	10, 20	42.8	428	535	60	30	45	35	3.6	2.5	D	3.6
10	180	10, 20	18	180	225	24	12	18	50	2.7	1.9	C	2
10	220	10, 20	22	220	275	24	12	18	45	2.9	2	C	2
10	390	10, 20	39	390	487	40	20	30	35	3.6	2.5	D	3.6
10	470	10, 20	47	470	587	44	22	33	35	3.6	2.5	D	3.6
16	120	10, 20	19.2	192	240	20	10	15	55	2.6	1.8	C	2
16	150	10, 20	24	240	300	24	12	18	50	2.9	2	C	2
16	270	10, 20	43.2	432	540	32	16	24	45	3.5	2.3	D	3.6
16	330	10, 20	52.8	528	660	40	20	30	45	3.6	2.5	D	3.6
20	82	10, 20	16.4	164	205	12	6	9	65	2.4	1.7	C	2
20	100	10, 20	20	200	250	16	8	12	60	2.5	1.7	C	2
20	180	10, 20	36	360	450	24	12	18	50	3	2.1	D	3.6
20	220	10, 20	44	440	550	24	12	18	45	3.1	2.2	D	3.6



(1) Rated Voltage ( $U_R$ ) (V)	(2) Capacitance Value (C) ( $\mu$ F)	(3) Tolerance  ( $\pm$ %)	DC Leakage Current ( $I_L$ )			Dissipation Factor (DF)			(10) ESR max 500kHz +25°C (m $\Omega$ )	(11) Ripple Current 500kHz +25°C (max) (1) (A)	(12) Ripple Current 1.0kHz +25°C (max) (1) (A)	(13) Case Size	(14) Max. Weight (g)
			(4) +25°C ( $\mu$ A)	(5) +85°C ( $\mu$ A)	(6) +125°C ( $\mu$ A)	(7) -55°C (%)	(8) +25°C (%)	(9) +85°C and +125°C (%)					
25	39	10, 20	9.7	97	121	10	5	7.5	95	2	1.4	C	2
25	47	10, 20	11.7	117	146	12	6	9	85	2.1	1.5	C	2
25	82	10, 20	20.5	205	256	12	6	9	65	2.6	1.8	D	3.6
25	100	10, 20	25	250	312	16	8	12	60	2.7	1.9	D	3.6
40	33	10, 20	13.2	132	165	10	5	7.5	100	1.9	1.3	C	2
40	56	10, 20	22.4	224	280	12	6	9	80	2.3	1.6	D	3.6
40	68	10, 20	27.2	272	340	12	6	9	75	2.4	1.7	D	3.6
50	22	10, 20	11	110	137	10	5	7.5	125	1.7	1.2	C	2
50	47	10, 20	23.5	235	293	12	6	9	85	2.3	1.6	D	3.6
63	12	10, 20	7.5	75	93	10	5	7.5	160	1.5	1.1	C	2
63	15	10, 20	9.4	94	118	10	5	7.5	145	1.6	1.1	C	2
63	33	10, 20	20.8	208	260	10	5	7.5	100	2.1	1.5	D	3.6

**NOTES:**

1. At  $T_{amb} \leq +25^\circ\text{C}$ . For derating at  $T_{amb} > +25^\circ\text{C}$ , see Figure 1(a).



**TABLE 1(b) - MAXIMUM RATINGS**

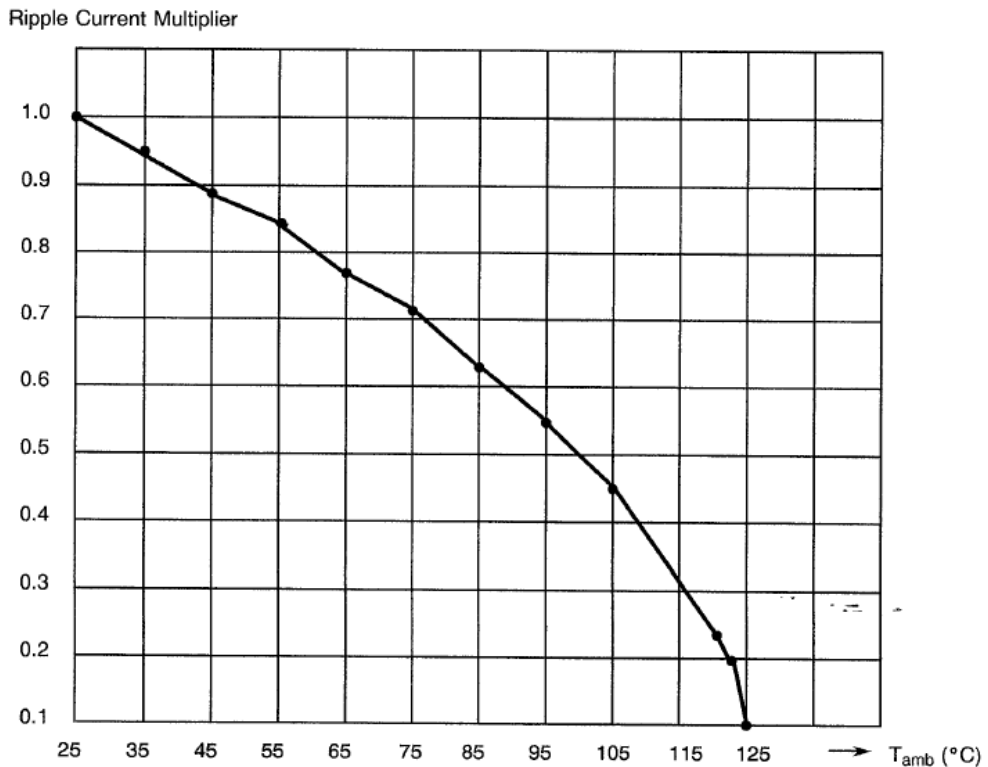
No.	Characteristics	Symbol	Maximum Ratings	Units	Remarks
1	Rated Voltage	$U_R$	See Table 1(a), Column 1	Vdc	
2	Surge Voltage	$U_S$	$1.3 \times U_R$	Vdc	$\leq 85^\circ\text{C}$
3	Category Voltage	$U_C$	$0.66 \times U_R$	Vdc	
4	Operating Temperature Range	$T_{op}$	-55 to +125	$^\circ\text{C}$	$T_{amb}$
5	Rated Temperature	$T_r$	+85	$^\circ\text{C}$	
6	Category Temperature	$T_c$	+125	$^\circ\text{C}$	
7	Storage Temperature Range	$T_{stg}$	-55 to +125	$^\circ\text{C}$	
8	Soldering Temperature	$T_{sol}$	+260	$^\circ\text{C}$	Note 2

**NOTES:**

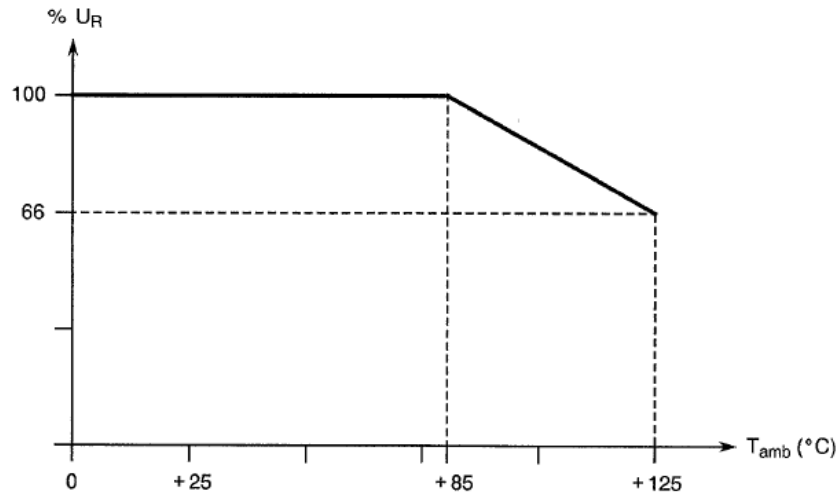
1. At  $T_{amb} \leq +25^\circ\text{C}$ . For derating at  $T_{amb} > +25^\circ\text{C}$ , see Figure 1(b).
2. Soldering time 10 seconds maximum for reflow soldering.

**FIGURE 1 – PARAMETER DERATING INFORMATION**

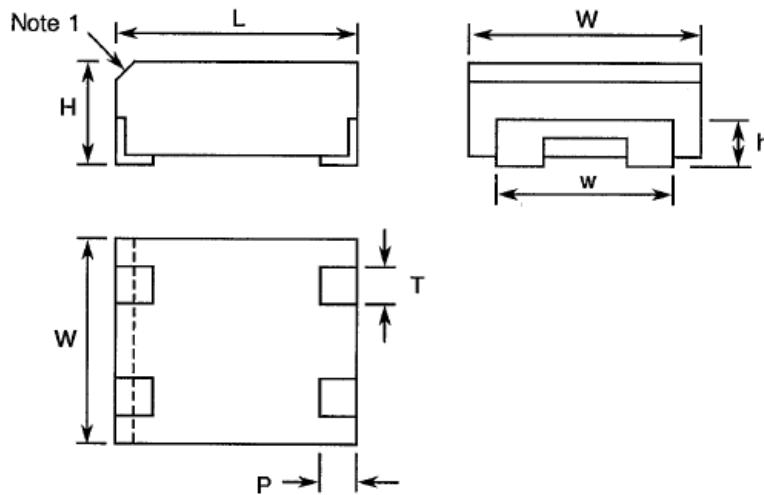
**FIGURE 1(a) - RIPPLE CURRENT VERSUS TEMPERATURE**



**FIGURE 1(b) - RATED VOLTAGE VERSUS TEMPERATURE**



**FIGURE 2 – PHYSICAL DIMENSIONS**

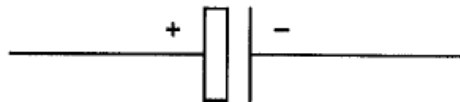


CASE SIZE	DIMENSIONS (mm)												
	L		W		H		w		P		T		h
	Min	Max	Min	Max	Min	Max	Min	Max	Min	Max	Min	Max	Min
C	10.9	11.9	8.9	9.5	4.4	5.4	6.7	7.3	1.2	1.8	1.7	2.3	2
D	10.9	11.9	12.4	13	5.4	6.4	10.2	10.8	1.2	1.8	2.7	3.3	2

**NOTES:**

1. Chamfer is 0.8mm at 45° and indicates the positive end.

**FIGURE 3 – FUNCTIONAL DIAGRAM**



## 4 REQUIREMENTS

### 4.1 GENERAL

The complete requirements for procurement of the capacitors specified herein are stated in this specification and ESCC Generic Specification No. 3012 for Capacitors, Leadless Surface Mounted, Tantalum, Solid Electrolyte, Enclosed Anode Connection. Deviations from the Generic Specification, applicable to this specification only, are listed in Para. 4.2.

Deviations from the applicable Generic Specification and this Detail Specification, formally agreed with specific Manufacturers on the basis that the alternative requirements are equivalent to the ESCC requirements and do not affect the components' reliability, are listed in the appendices attached to this specification.

### 4.2 DEVIATIONS FROM GENERIC SPECIFICATION

#### 4.2.1 Deviations from Special In-process Controls

None.

#### 4.2.2 Deviations from Final Production Tests (Chart II)

- (a) Para. 9.4.4, Electrical Measurements at Room Temperature:
- Capacitance and Dissipation factor shall be measured at 1kHz  $\pm$ 50Hz.
  - ESR shall be measured as specified in Table 2.

#### 4.2.3 Deviations from Burn-in and Electrical Measurements (Chart III)

- (a) Para. 9.4.4, Electrical Measurements at Room Temperature:
- Capacitance and Dissipation factor shall be measured at 1kHz  $\pm$ 50Hz.
  - ESR shall be measured as specified in Table 2.

#### 4.2.4 Deviations from Qualification Tests (Chart IV)

- (a) An additional subgroup of 12 components shall be added to Chart IV (total 104 components). This subgroup shall be submitted to a ripple current test as follows:
- The capacitors shall be mounted and placed in a still air enclosure at room temperature. A sinusoidal AC voltage (100kHz  $\pm$ 2kHz) shall be superimposed on 50% of rated DC voltage so that the peak voltages do not exceed the value of the rated DC voltage of the capacitor. Rated ripple current (see Column 11 of Table 1(a)) shall be applied continuously, except for measurement periods, for a duration of 240 hours.
  - The DC voltage shall be supplied by a regulated power supply, free from surges, having a low internal resistance, and shall be applied to each capacitor through a separate resistor. DC power supply regulation shall remain within  $\pm$ 2% or less. AC power supply shall be within  $\pm$ 5% of current with less than 10% distortion.
  - After testing, the capacitors shall be examined for evidence of mechanical damage and shall be measured in accordance with Table 2 of this specification.
  - 1 failure is allowed for this subgroup.
- (b) Para. 9.19, Solderability: The solderable area is the termination 'pad' and up to 1/3 the height of the tab.

#### 4.2.5 Deviations from Lot Acceptance Tests (Chart V)

- (a) An additional subgroup of 12 components shall be added to Level 1 (total of 34 components). This subgroup shall be submitted to a ripple current test as specified in Para. 4.2.4.
- (b) Para. 9.19, Solderability: The solderable area is the termination 'pad' and up to 1/3 the height of the tab.

#### 4.3 MECHANICAL REQUIREMENTS

##### 4.3.1 Dimension Check

The dimensions of the capacitors specified herein shall be verified in accordance with the requirements set out in Para. 9.6 of ESCC Generic Specification No. 3012 and they shall conform to those shown in Figure 2 of this specification.

##### 4.3.2 Weight

The maximum weight of the capacitors specified herein shall be as specified in Table 1(a) - Range of Components

##### 4.3.3 Adhesion

The requirements for adhesion are specified in Para. 9.10 of ESCC Generic Specification No. 3012.

#### 4.4 MATERIALS AND FINISHES

The materials and finishes shall be as specified herein. Where a definite material is not specified, a material which will enable the capacitors specified herein to meet the performance requirements of this specification shall be used. Acceptance or approval of any constituent material does not guarantee acceptance of the finished product.

##### 4.4.1 Case

The case shall be epoxy moulding.

##### 4.4.2 Termination Material and Finish

The terminations shall be brass.

The termination finishes shall be Type 9 (Variant 01), Type 10 (Variant 03) and Type 18 (Variant 04), in accordance with the requirements of ESCC Basic Specification No. 23500.

#### 4.5 MARKING

##### 4.5.1 General

The marking of all components delivered to this specification shall be in accordance with the requirements of ESCC Basic Specification No. 21700 and the following paragraphs. When the component is too small to accommodate all of the marking specified, as much as space permits shall be marked and the marking information, in full, shall accompany each component in its primary package.

The information to be marked and the order of precedence, shall be as follows:

- (a) Polarity.
- (b) The ESCC Component Number.
- (c) Electrical Characteristics and Ratings.
- (d) Traceability Information.

##### 4.5.2 Polarity

Polarity shall be defined by a chamfer on the positive end of the body of the capacitor.

#### 4.5.3 The ESCC Component Number

Each component shall bear the ESCC Component Number which shall be constituted and marked as follows:

Example: 301200301B

- Detail Specification Number: 3012003
- Type Variant (see Note): 01
- Testing Level (B or C, as applicable): B

**NOTE:**

For Type Variants see Para. 4.4.2.

#### 4.5.4 Electrical Characteristics and Ratings

The electrical characteristics and ratings to be marked, in the following order of precedence, are:

- (a) Capacitance Value.
- (b) Tolerance.
- (c) Rated voltage.

The information shall be constituted and marked as follows:

Example: 127KB

- Capacitance value (120000000pF): 127
- Tolerance ( $\pm 10\%$ ): K
- Rated Voltage (6.3V): B

##### 4.5.4.1 *Capacitance Values*

The capacitance values shall be expressed by means of the following codes. The unit quantity for marking shall be picofarads (pF).

Capacitance Value (pF)	Code
XX10 <sup>5</sup>	XX5
XX10 <sup>6</sup>	XX6
XX10 <sup>7</sup>	XX7

##### 4.5.4.2 *Tolerance*

The tolerance on capacitance values shall be indicated by the code letters specified hereafter.

Tolerance ( $\pm$ %)	Code Letter
10	K
20	M

#### 4.5.4.3 *Rated Voltage*

The rated voltage shall be indicated by the code letters specified hereafter.

Rated Voltage ( $U_R$ ) (V)	Code Letter
6.3	B
10	D
16	E
20	F
25	G
40	K
50	L
63	N

#### 4.5.5 Traceability Information

Each component shall be marked in respect of traceability information in accordance with the requirements of ESCC Basic Specification No. 21700.

#### 4.6 ELECTRICAL MEASUREMENTS

##### 4.6.1 Electrical Measurements at Room Temperature

The parameters to be measured at room temperature are scheduled in Table 2. Unless otherwise specified, the measurements shall be performed at  $T_{amb} = +22 \pm 3^\circ\text{C}$ .

##### 4.6.2 Electrical Measurements at High and Low Temperatures

The parameters to be measured at high and low temperatures are scheduled in Table 3.

##### 4.6.3 Circuits for Electrical Measurements (Figure 4)

Not applicable.

#### 4.7 BURN-IN TESTS

##### 4.7.1 Parameter Drift Values

The parameter drift values applicable to burn-in are specified in Table 4 of this specification. Unless otherwise stated, measurements shall be performed at  $T_{amb} = +22 \pm 3^\circ\text{C}$ . The parameter drift values ( $\Delta$ ) applicable to the scheduled parameters shall not be exceeded. In addition to these drift value requirements for a given parameter, the appropriate limit value specified in Table 2 shall not be exceeded.

##### 4.7.2 Conditions for Burn-in

The requirements for burn-in are specified in Section 7 of ESCC Generic Specification No. 3012. The conditions for burn-in shall be as specified in Table 5(a) of this specification.

##### 4.7.3 Electrical Circuit for Burn-in (Figure 5)

Not applicable.

**TABLE 1 – ELECTRICAL MEASUREMENTS AT ROOM TEMPERATURE**

No.	Characteristics	Symbol	ESCC 3012 Test Method	Test Conditions	Limits		Unit
					Min.	Max.	
1	Capacitance	C	Para. 9.4.1.1	f = 1000 ±50Hz V <sub>p</sub> ≤ 2.2V V <sub>m</sub> ≤ 1Vrms	Note 1		μF
2	DC Leakage Current	I <sub>L</sub>	Para. 9.4.1.2	V <sub>m</sub> = U <sub>R</sub> ±2% R <sub>S</sub> = 1.0kΩ	-	Note 2	μA
3	Dissipation Factor	DF	Para. 9.4.1.3	f = 1000 ±50Hz	-	Note 3	%
4	Equivalent Series Resistance	ESR	-	f = 500 ±5kHz V <sub>p</sub> ≤ 2.2V V <sub>aCmax</sub> : 0.5Vrms	-	Note 4	mΩ

**NOTES:**

1. See Columns 2 and 3 of Table 1(a).
2. See Column 4 of Table 1(a).
3. See Column 8 of Table 1(a).
4. See Column 10 of Table 1(a).

**TABLE 2 – ELECTRICAL MEASUREMENTS AT HIGH AND LOW MEASUREMENT**

No.	Characteristics	Symbol	ESCC 3012 Test Method	Test Conditions (Note 1)	Limits		Unit
					Min.	Max.	
1	Capacitance Change	ΔC/C	Para. 9.4.1.1	f = 1000 ±50Hz V <sub>p</sub> ≤ 2.2V V <sub>m</sub> ≤ 1Vrms T <sub>amb</sub> = -55°C T <sub>amb</sub> = +85°C T <sub>amb</sub> = +125°C	-10 -8 -12	+10 +8 +12	% (2)
2	DC Leakage Current	I <sub>L</sub>	Para. 9.4.1.2	R <sub>S</sub> = 1.0kΩ T <sub>amb</sub> = +85°C, V <sub>m</sub> = U <sub>R</sub> ±2% T <sub>amb</sub> = +125°C, V <sub>m</sub> = 0.67U <sub>R</sub>	- -	Note 3 Note 4	μA
3	Dissipation Factor	DF	Para. 9.4.1.3	f = 1000 ±50Hz T <sub>amb</sub> = -55°C T <sub>amb</sub> = +85°C T <sub>amb</sub> = +125°C	- - -	Note 5 Note 6 Note 6	%

**NOTES:**

1. Inspection Level II, Single Sampling, AQL 0.65% of IEC Publication No. 410 for each capacitance value. Each capacitance value shall be considered as constituting a complete lot.
2. With respect to the values measured in Table 2.
3. See Column 5 of Table 1(a).
4. See Column 6 of Table 1(a).
5. See Column 7 of Table 1(a).
6. See Column 9 of Table 1(a).

**FIGURE 4 – CIRCUITS FOR ELECTRICAL MEASUREMENTS**

Not applicable.

**TABLE 3 – PARAMETER DRIFT VALUES**

No.	Characteristics	Symbol	Spec. and/or Test Method	Test Conditions	Change Limits ( $\Delta$ )	Unit
1	Capacitance Change	$\Delta C/C$	As per Table 2	As per Table 2	$\pm 5$	%
2	DC Leakage Current Change	$\Delta I/L$	As per Table 2	As per Table 2	Notes 1 and 2	$\mu A$

**NOTES:**

1. Leakage currents  $< 0.1\mu A$  are considered as a  $0.1\mu A$  value.
2.  $2x$  initial value measured or  $(0.25x \text{ Table 2 Item 2}) + 0.05\mu A$ , whichever is smaller.

**TABLE 4 – CONDITIONS FOR BURN-IN AND OPERATING LIFE TESTS**

**TABLE 5(a) - CONDITIONS FOR BURN-IN**

No.	Characteristic	Symbol	Condition	Unit
1	Ambient Temperature	$T_{amb}$	+85 (+0 -3)	$^{\circ}C$
2	Test Voltage	$V_T$	$U_R$	V

**TABLE 5(b) - CONDITIONS FOR OPERATING LIFE TESTS**

No.	Characteristics	Symbol	Condition	Unit
1	Ambient Temperature 1	$T_{amb1}$	+85 (+0 -3)	$^{\circ}C$
2	Test Voltage 1	$V_{T1}$	$U_R$	V
3	Ambient Temperature 2	$T_{amb2}$	+125 (+0 -3)	$^{\circ}C$
4	Test Voltage 2	$V_{T2}$	$U_C$	V

**FIGURE 5 – ELECTRICAL CIRCUIT FOR BURN-IN AND OPERATING LIFE TESTS**

Not applicable.



- 4.8 ENVIRONMENTAL AND ENDURANCE TESTS (CHARTS IV AND V OF ESCC GENERIC SPECIFICATION NO. 3012)
- 4.8.1 Measurements and Inspections on Completion of Environmental Tests  
The parameters to be measured and inspections to be performed on completion of environmental tests are scheduled in Table 6. Unless otherwise stated, the measurements shall be performed at  $T_{amb} = +22 \pm 3^{\circ}\text{C}$ .
- 4.8.2 Measurements and Inspections at Intermediate Points during Endurance Tests  
The parameters to be measured and inspections to be performed at intermediate points during endurance tests are scheduled in Table 6. Unless otherwise stated, the measurements shall be performed at  $T_{amb} = +22 \pm 3^{\circ}\text{C}$ .
- 4.8.3 Measurements and Inspections on Completion of Endurance Tests  
The parameters to be measured and inspections to be performed on completion of endurance tests are scheduled in Table 6. Unless otherwise stated, the measurements shall be performed at  $T_{amb} = +22 \pm 3^{\circ}\text{C}$ .
- 4.8.4 Conditions for Operating Life Tests (Part of Endurance Testing)  
The requirements for operating life testing are specified in Section 9 of ESCC Generic Specification No. 3012. The conditions for operating life testing shall be as specified in Table 5(b) of this specification.
- 4.8.5 Electrical Circuit for Operating Life Tests (Figure 5)  
Not applicable.

**TABLE 5 – MEASUREMENTS AND INSPECTIONS ON COMPLETION OF ENVIRONMENTAL TESTS AND AT INTERMEDIATE POINTS AND ON COMPLETION OF ENDURANCE TESTING**

No.	ESCC Generic Spec. No. 3012		Measurements and Inspections		Symbols	Limits		Units
	Environmental and Endurance Tests (Note 1)	Test Methods and Conditions	Identification	Conditions		Min	Max	
01	Mounting	Para. 9.9	<b>Final Examination</b> Terminals	Good tinning	-	-	-	
			<b>Final Measurements</b> Capacitance	Table 2 Item 1	C	Record Values		
			DC Leakage Current	Table 2 Item 2	I <sub>L</sub>	-	Table 2	
			Dissipation Factor	Table 2 Item 3	DF	-	Table 2	
02	Rapid Change of Temperature	Para. 9.3.2	<b>Initial Measurements</b> Capacitance	Value recorded in 01	C	Table 2 Item 1		
			<b>Final Measurements</b> Visual Examination	Recovery period of 4 hours min.	-	-	-	
			Capacitance Change	Table 2 Item 1	$\Delta C/C$	-5	+5	%
			DC Leakage Current	Table 2 Item 2	I <sub>L</sub>	-	Table 2	
			Dissipation Factor	Table 2 Item 3	DF	-	Table 2	

No.	ESCC Generic Spec. No. 3012		Measurements and Inspections		Symbols	Limits		Units
	Environmental and Endurance Tests (Note 1)	Test Methods and Conditions	Identification	Conditions		Min	Max	
03	External Visual Inspection	Para. 9.5	<b>Final Inspection</b> Visual Inspection	ESCC No. 20500	-	-	-	
04	Adhesion	Para. 9.10 and Para. 4.3.3 of this spec.	<b>Initial Measurements</b> Capacitance  <b>Final Measurements</b> Visual Examination  Capacitance Change	Value recorded in 01  No damage or loosening from the substrate  Table 2 Item 1	C  -  $\Delta C/C$	Table 2 Item 1  -  -5		     %
05	Vibration	Para. 9.11	<b>Measurements during test</b>   <b>Final Examination</b> Visual Examination	During Last Cycle  No Intermittent Contact > 0.5ms, arcing or open or shorts  No damage	-  -  -	-  -  -	-  -  -	
06	Shock or Bump	Para. 9.12	<b>Final Examination</b> Visual Examination	-	-	-	-	
07	Climatic Sequence	Para. 9.13	<b>Initial Measurements</b> Capacitance  DC Leakage Current  <b>Final Measurements</b> Visual Inspection Capacitance Change DC Leakage Current Dissipation Factor	Value recorded in 01 After Dry Heat (2) Table 3 Item 2  After recovery of 1 to 24 hours ESCC No. 20500 Table 2 Item 1 Table 2 Item 2 Table 2 Item 3	C  $I_L$  -  $\Delta C/C$  $I_L$  DF	Table 2 Item 1  -  Table 3  -  -10  -  -  Table 2  (3)		        %
08	High and Low Temperature Stability	Para. 9.14	<b>Measurements during test</b> Electrical Measurements	Tables 2 & 3	-	Tables 2 & 3		
09	Surge Voltage	Para. 9.15	<b>Final Measurements</b> Capacitance DC Leakage Current Dissipation Factor	Table 2 Item 1 Table 2 Item 2 Table 2 Item 3	$\Delta C/C$ $I_L$ DF	-10 - -	+10 Table 2 Table 2	% (4)

No.	ESCC Generic Spec. No. 3012		Measurements and Inspections		Symbols	Limits		Units
	Environmental and Endurance Tests (Note 1)	Test Methods and Conditions	Identification	Conditions		Min	Max	
10	Damp Heat Steady State	Para. 9.16	<b>Initial Measurements</b> Capacitance	Table 2 Item 1	C	Table 2		%
			<b>Final Measurements</b> Visual Examination	After recovery of 1 to 2 hours -	-	-	-	
			Capacitance Change	Table 2 Item 1	$\Delta C/C$	-10	+10	
			DC Leakage Current	Table 2 Item 2	I <sub>L</sub>	-	Table 2	
			Dissipation Factor	Table 2 Item 3	DF	-	(3)	
11	Operating Life	Para. 9.17	<b>Initial Measurements</b> Capacitance	Value recorded in 01	C	Table 2 Item 1		%
			<b>Intermediate Measurements At 250 and 1000 hrs</b> DC Leakage Current (2)	Table 3 Item 2	I <sub>L</sub>	-	(5)	
			<b>Final Measurements at 1000 and 2000 hrs</b> Capacitance Change	After recovery of 1 to 2 hours Table 2 Item 1	$\Delta C/C$	-10	+10	
			DC Leakage Current	Table 2 Item 2	I <sub>L</sub>	-	(6)	
			Dissipation Factor	Table 2 Item 3	DF	-	(7)	
			Visual Examination	No damage	-	-	-	
12	Permanence of Marking	Para. 9.18	<b>Final Examination</b> Visual Examination	No corrosion or obliteration of marking	-	-	-	
13	Solderability	Para. 9.19 and 4.2.4 of this spec.	<b>Final Examination</b> Visual Examination	No damage	-	-	-	

**NOTES:**

1. The tests in this Table refer to either Chart IV or V and shall be used as applicable.
2. While still at the high temperature.
3. 1.2x the value specified in Table 2 of this specification.
4. Compared to the values measured in Table 2 of this specification.
5. 1.25x the value specified in Table 3 of this specification.
6. 2x the value specified in Table 2 of this specification.
7. 1.5x the value specified in Table 2 of this specification.