



ISOLATORS, MINIATURE DROP-IN

4 - 18 GHz

BASED ON SERIES F9*XXXX AND H9*XXXX

ESCC Detail Specification No. 3202/025

Issue 2	November 2013
---------	---------------



LEGAL DISCLAIMER AND COPYRIGHT

European Space Agency, Copyright © 2013. All rights reserved.

The European Space Agency disclaims any liability or responsibility, to any person or entity, with respect to any loss or damage caused, or alleged to be caused, directly or indirectly by the use and application of this ESCC publication.

This publication, without the prior permission of the European Space Agency and provided that it is not used for a commercial purpose, may be:

- copied in whole, in any medium, without alteration or modification.
- copied in part, in any medium, provided that the ESCC document identification, comprising the ESCC symbol, document number and document issue, is removed.

DOCUMENTATION CHANGE NOTICE

(Refer to <https://escies.org> for ESCC DCR content)

DCR No.	CHANGE DESCRIPTION
799	Specification upissued to incorporate editorial changes per DCR.

TABLE OF CONTENTS

1	GENERAL	6
1.1	SCOPE	6
1.2	COMPONENT TYPE VARIANTS	6
1.3	MAXIMUM RATINGS	6
1.4	PHYSICAL DIMENSIONS	6
1.5	FUNCTIONAL DIAGRAM	6
2	APPLICABLE DOCUMENTS	6
3	TERMS, DEFINITIONS, ABBREVIATIONS, SYMBOLS AND UNITS	6
4	REQUIREMENTS	12
4.1	GENERAL	12
4.2	DEVIATIONS FROM GENERIC SPECIFICATION	12
4.2.1	Deviations from Special In-process Controls	12
4.2.2	Deviations from Final Production Tests (Chart II)	12
4.2.3	Deviations from Burn-in and Electrical Measurements (Chart III)	12
4.2.4	Deviations from Qualification Tests (Chart IV)	13
4.2.5	Deviations from Lot Acceptance Tests (Chart V)	13
4.3	MECHANICAL REQUIREMENTS	13
4.3.1	Contact Engagement and Separation Forces	13
4.3.2	Voltage Proof	13
4.3.3	Weight	13
4.3.4	Coupling Proof Torque	13
4.3.5	Mating and Unmating Forces	13
4.3.6	Centre Contact Retention	13
4.3.7	Dimension Check	13
4.3.8	Endurance	13
4.4	MATERIALS AND FINISHES	13
4.4.1	General	13
4.4.2	Body	14
4.4.3	Connector Receptacle	14
4.4.4	Tab Material and Finish	14
4.5	MARKING	14
4.5.1	General	14
4.5.2	Input and Output Port Identification	14
4.5.3	The ESCC Component Number	14
4.5.4	Traceability Information	14
4.6	ELECTRICAL MEASUREMENTS	14

4.6.1	Electrical Measurements at Room Temperature	14
4.6.2	Electrical Measurements at High and Low Temperatures	14
4.6.3	Circuits for Electrical Measurements	14
4.7	BURN-IN TESTS	15
4.8	ENVIRONMENTAL AND ENDURANCE TESTS (CHARTS IV AND V OF ESCC GENERIC SPECIFICATION NO. 3202)	16
4.8.1	Measurements and Inspections on Completion of Environmental Tests	16
4.8.2	Measurements and Inspections at Intermediate Points and on Completion of Endurance Tests	16
4.8.3	Conditions for Operating Life Tests (Part of Endurance Testing)	16
4.8.4	Electrical Circuits for Operating Life Tests	16

1 GENERAL

1.1 SCOPE

This specification details the ratings, physical and electrical characteristics, test and inspection data for an Isolator, Miniature Drop-in, 4 - 18 GHz, based on Series F9*XXXX and H9*XXXX. It shall be read in conjunction with ESCC Generic Specification No. 3202, the requirements of which are supplemented herein.

1.2 COMPONENT TYPE VARIANTS

Variants of the basic type isolators specified herein, which are also covered by this specification, are given in Table 1(a).

1.3 MAXIMUM RATINGS

The maximum ratings, which shall not be exceeded at any time during use or storage, applicable to the isolators specified herein, are as scheduled in Table 1(b).

1.4 PHYSICAL DIMENSIONS

The physical dimensions of the isolators specified herein, are shown in Figure 2.

1.5 FUNCTIONAL DIAGRAM

The functional diagram, showing port identification of the isolators specified herein, is shown in Figure 3.

2 APPLICABLE DOCUMENTS

The following documents form part of this specification and shall be read in conjunction with it:

- (a) ESCC Generic Specification No. 3202, Ferrite Microwave Components, Isolators and Circulators.

3 TERMS, DEFINITIONS, ABBREVIATIONS, SYMBOLS AND UNITS

For the purpose of this specification, the terms, definitions, abbreviations, symbols and units specified in ESCC Basic Specification No. 21300 shall apply.

TABLE 1(a) – TYPE VARIANTS

(1) Variant	(2) Based On Type	(3) Centre Freq. (f _c) (GHz)	(4) Min. Bandwidth (B) (GHz)	(5) Minimum Isolation (ISO) (dB)	(6) Maximum Insertion Loss (IL) (dB)	(7) Minimum Return Loss		(8) Operating Temp. Range		(9) Figure	(10) Config. and Funct. Diag.	(11) Tab Material and Finish
						Input (RL _{IN}) (dB)	Output (RL _{OUT}) (dB)	Min. (°C)	Max. (°C)			
01	F9*2001	14	4	17	0.7	14	14	-54	+95	2(a)	3(a)	M7
02	F9*9001	8.153	0.1	20	0.4	19.1	19.1	-20	+80	2(a)	3(a)	M7
03	F9*9001	8.153	0.1	20	0.4	19.1	19.1	-20	+80	2(c)	3(b)	M7
04	F9*2001	14	4	17	0.7	14	14	-54	+95	2(a)	3(b)	M4
05	F9*9001	8.153	0.1	20	0.4	19.1	19.1	-20	+80	2(a)	3(a)	M4
06	H9*2001	14	4	17	0.7	14	14	-54	+95	2(b)	3(b)	M4
07	H9*2001	14	4	17	0.7	14	14	-54	+95	2(b)	3(a)	M7
08	H9*9001	8.153	0.1	20	0.4	19.1	19.1	-20	+80	2(d)	3(a)	M7
09	H9*9001	8.153	0.1	20	0.4	19.1	19.1	-20	+80	2(d)	3(b)	M4

TABLE 1(b) - MAXIMUM RATINGS

No.	Characteristics	Symbol	Maximum Ratings	Unit	Remarks
1	Frequency Range	-	8 to 18 4 to 12	GHz	Note 1 Note 2
2	Peak RF Power Peak RF Power Duration Peak RF Power Duty Cycle	P _P - -	50 50 1	W µs %	-
3	Rated RF Power (Continuous Reflected)	P	0.5	W	-
4	Load RF Power (Peak Reflected) Load RF Power Duration Load RF Power Duty Cycle	P _L - -	5 50 1	W µs %	-
5	Operating Temperature Range	T _{op}	Note 3	°C	T _{amb}
6	Storage Temperature Range	T _{stg}	-60 to +125	°C	-
7	Maximum Tab Soldering Temperature	T _{sol}	+240	°C	Note 4

NOTES

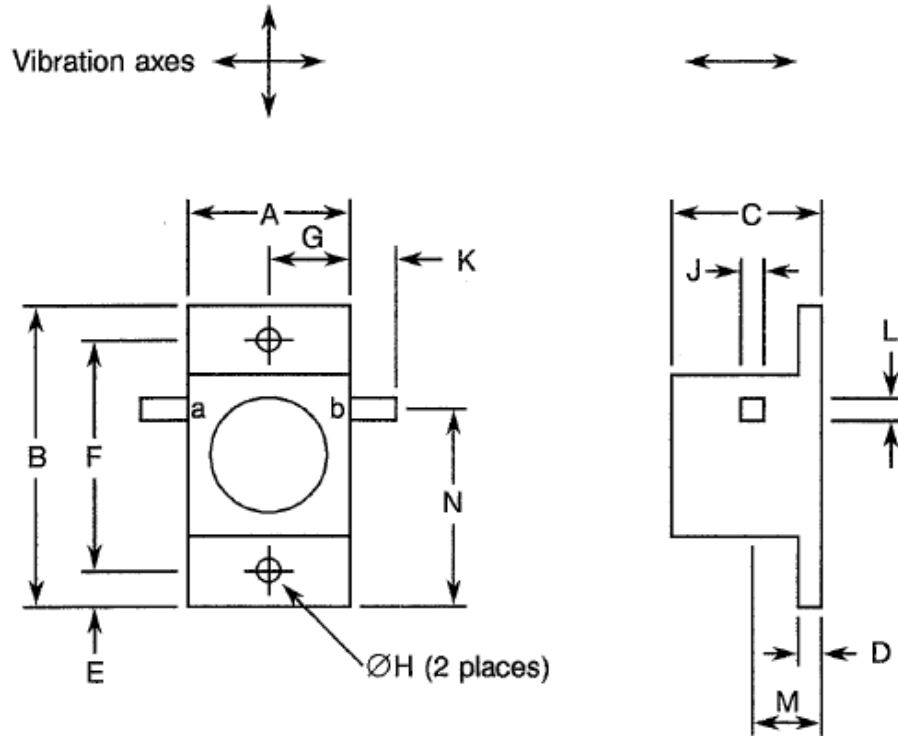
1. Figures 2(a) and 2(b).
2. Figures 2(c) and 2(d).
3. The Operating Temperature Range for a Type Variant shall be as specified in Column 8 of Table 1(a). The Operating Temperature Range shall not exceed the Storage Temperature Range.
4. Duration 5 seconds maximum at a distance of not less than 1.5mm from the body and the same termination shall not be resoldered until 3 minutes have elapsed.

FIGURE 1 - PARAMETER DERATING INFORMATION

Not applicable.

FIGURE 2 - PHYSICAL DIMENSIONS

FIGURE 2(a) - 1/4" FLANGED

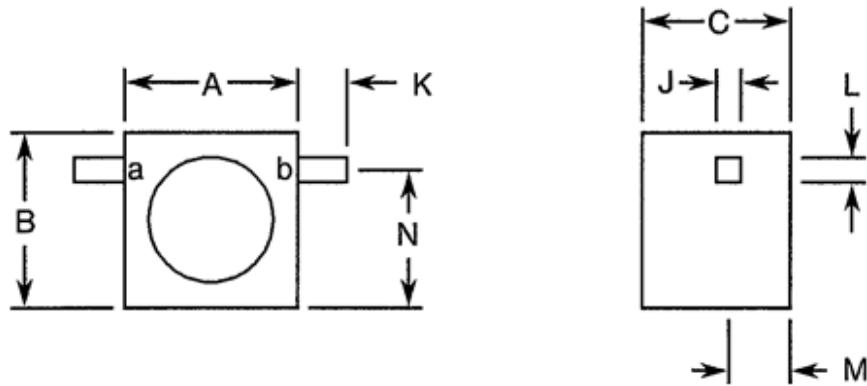


Symbol	Millimetres	
	Min.	Max.
A	-	6.4
B	-	12.82
C	-	4.82
D	-	1.27
E	1.39	1.65
F	9.52	9.78
G	3.05	3.3
ØH	2	2.4
J	0.1	0.15
K	1.27	2.29
L	0.51	0.76
M	1.27	1.52
N	7.62	8.13

NOTES

1. The input and output ports shall be marked as specified in Figure 3.

FIGURE 2(b) - 1/4" FLANGELESS

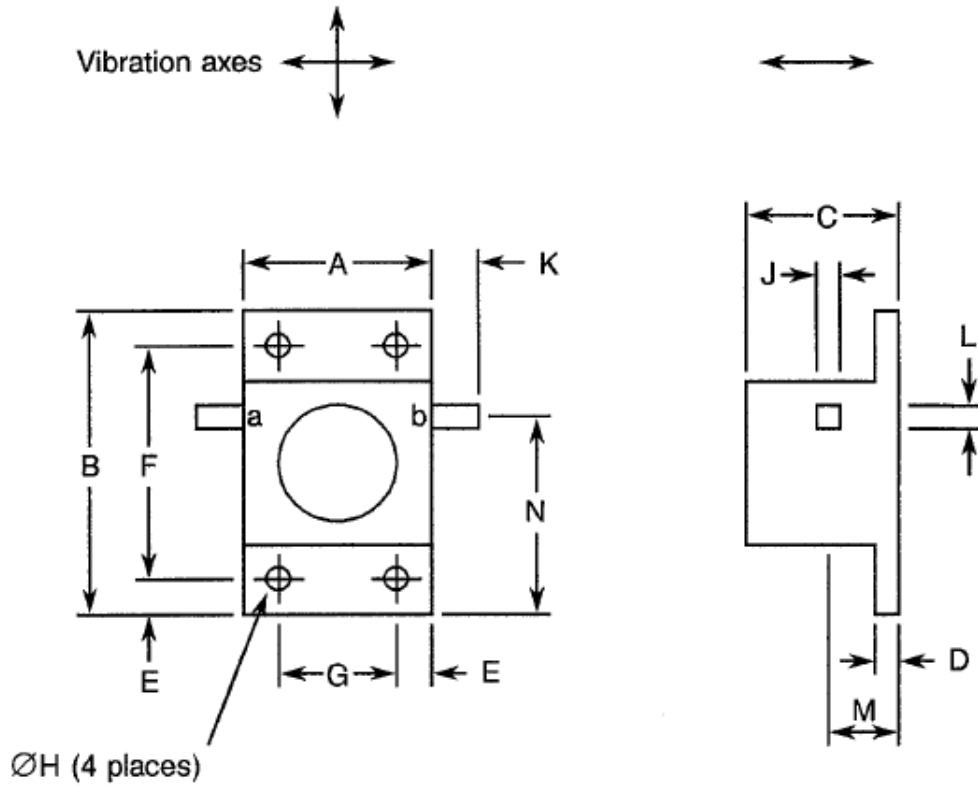


Symbol	Millimetres	
	Min.	Max.
A	-	6.48
B	-	6.48
C	-	3.81
J	0.1	0.15
K	1.27	2.29
L	0.51	0.76
M	1.65	1.91
M	4.44	4.7

NOTES

1. The input and output ports shall be marked as specified in Figure 3.

FIGURE 2(c) - 3/8" FLANGED

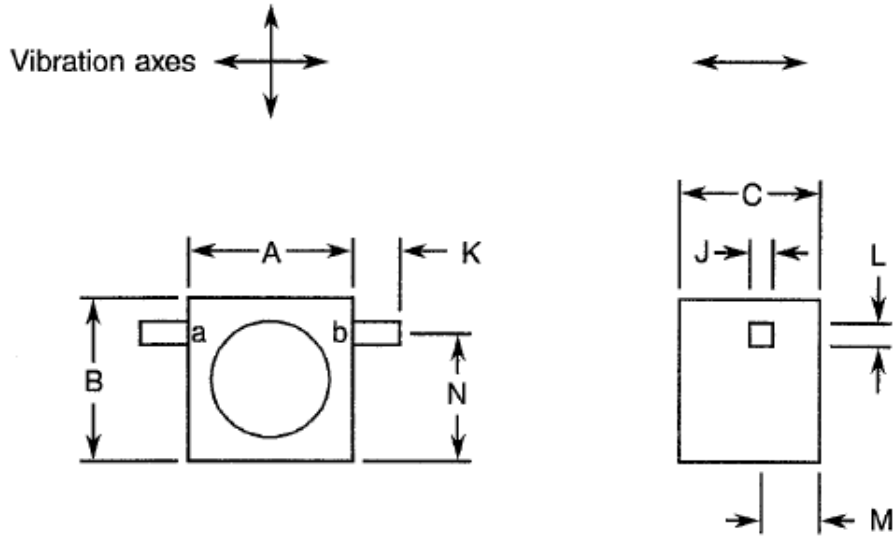


Symbol	Millimetres	
	Min.	Max.
A	-	9.65
B	-	16
C	-	5.59
D	-	1.27
E	1.39	1.65
F	12.7	12.95
G	6.35	6.6
ØH	2	2.4
J	0.1	0.15
K	1.27	2.29
L	0.51	0.76
M	1.27	1.52
N	10.16	10.41

NOTES

1. The input and output ports shall be marked as specified in Figure 3.

FIGURE 2(d) - 3/8" FLANGELESS



Symbol	Millimetres	
	Min.	Max.
A	-	9.65
B	-	9.78
C	-	5.59
J	0.1	0.15
K	1.27	2.29
L	0.51	0.76
M	1.65	1.91
N	6.98	7.24

NOTES

1. The input and output ports shall be marked as specified in Figure 3.

FIGURE 3 - FUNCTIONAL DIAGRAM

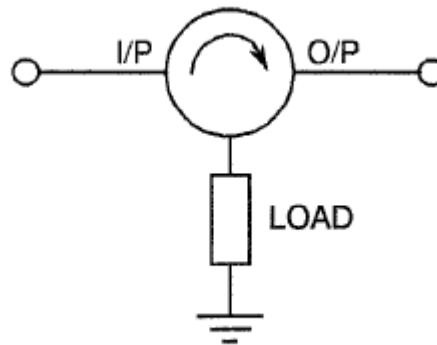


Figure	Port	
	a	b
3(a)	I/P	O/P
3(b)	O/P	I/P

4 REQUIREMENTS

4.1 GENERAL

The complete requirements for procurement of the isolators specified herein shall be as stated in this specification and ESCC Generic Specification No. 3202. Deviations from the Generic Specification applicable to this specification only, are detailed in Para. 4.2.

Deviations from the applicable Generic Specification and this Detail Specification, formally agreed with specific Manufacturers on the basis that the alternative requirements are equivalent to the ESCC requirements and do not affect the components' reliability, are listed in the appendices attached to this specification.

4.2 DEVIATIONS FROM GENERIC SPECIFICATION

4.2.1 Deviations from Special In-process Controls

None.

4.2.2 Deviations from Final Production Tests (Chart II)

- (a) Para. 9.7.1.6, Voltage Proof: Shall not be performed.
- (b) Para. 9.6, Seal Test: Shall not be performed.
- (c) Para. 9.8, Coupling Proof Torque: Shall not be performed.
- (d) Para. 9.9, Mating and Unmating Forces: Shall not be performed.
- (e) Para. 9.10, Centre Contact Retention: Shall not be performed.
- (f) Para. 9.11, RF Leakage: Shall not be performed.
- (g) Para. 9.12, Multipaction: Shall not be performed.
- (h) Para. 9.13, Contact Engagement and Separation Forces: Shall not be performed.

4.2.3 Deviations from Burn-in and Electrical Measurements (Chart III)

None.

4.2.4 Deviations from Qualification Tests (Chart IV)

- (a) Para. 9.8, Coupling Proof Torque: Shall not be performed.
- (b) Para. 9.20, Endurance: Shall not be performed.
- (c) Para. 9.6, Seal Test: Shall not be performed.

4.2.5 Deviations from Lot Acceptance Tests (Chart V)

- (a) Para. 9.8, Coupling Proof Torque: Shall not be performed.
- (b) Para. 9.20, Endurance: Shall not be performed.
- (c) Para. 9.6, Seal Test: Shall not be performed.
- (d) Para. 9.9, Mating and Unmating Forces: Shall not be performed.
- (e) Para. 9.13, Contact Engagement and Separation Forces: Shall not be performed..

4.3 MECHANICAL REQUIREMENTS

4.3.1 Contact Engagement and Separation Forces

Not applicable.

4.3.2 Voltage Proof

Not applicable.

4.3.3 Weight

The maximum weight of the components specified herein shall be as follows:

- Figure 2(a): 3g.
- Figure 2(b): 2g.
- Figure 2(c): 5g.
- Figure 2(d): 4g.

4.3.4 Coupling Proof Torque

Not applicable.

4.3.5 Mating and Unmating Forces

Not applicable.

4.3.6 Centre Contact Retention

Not applicable.

4.3.7 Dimension Check

The dimensions of the components specified herein shall be verified in accordance with the requirements set out in Para. 9 of ESCC Generic Specification No. 3202 and shall conform to those shown in Figure 2.

4.3.8 Endurance

Not applicable.

4.4 MATERIALS AND FINISHES

4.4.1 General

The materials and finishes shall be as specified herein. Where a definite material is not specified, a material which will enable the components specified herein to meet the performance requirements of this specification shall be used. Acceptance or approval of any constituent material does not guarantee acceptance of the finished product.

- 4.4.2 Body
Stainless Steel, plated 3µm (min) nickel.
- 4.4.3 Connector Receptacle
Not applicable.
- 4.4.4 Tab Material and Finish
The tab material shall be Type 'M' with either Type '4' or Type '7' finish in accordance with the requirements of ESCC Basic Specification No. 23500. (See Table 1(a) for Type Variants).
- 4.5 MARKING
- 4.5.1 General
The marking of all components delivered to this specification shall be in accordance with the requirements of ESCC Basic Specification No. 21700. Each component shall be marked in respect of:
- (a) Input and Output Port Identification.
 - (b) The ESCC Component Number.
 - (c) Traceability Information.
- 4.5.2 Input and Output Port Identification
Input and Output Port identification shall be as shown in Table 1(a) and Figure 3.
- 4.5.3 The ESCC Component Number
Each component shall bear the ESCC Component Number which shall be constituted and marked as follows:
- Example: 320202501B
- Detail Specification Number: 3202025
 - Type Variant (See Table 1(a)): 01
 - Testing Level: B
- 4.5.4 Traceability Information
Each component shall be marked in respect of traceability information in accordance with the requirements of ESCC Basic Specification No. 21700.
- 4.6 ELECTRICAL MEASUREMENTS
- 4.6.1 Electrical Measurements at Room Temperature
The parameters to be measured at room temperature are scheduled in Table 2. Unless otherwise specified, the measurements shall be performed at $T_{amb} = +22 \pm 3 \text{ }^\circ\text{C}$.
- 4.6.2 Electrical Measurements at High and Low Temperatures
The parameters to be measured at high and low temperatures are scheduled in Table 3. Measurements shall be performed at the temperature extremes as defined in Column 8 of Table 1(a).
- 4.6.3 Circuits for Electrical Measurements
Circuits for use in performing electrical measurements are given in ESCC Generic Specification No. 3202.

4.7 BURN-IN TESTS

Not applicable.

TABLE 2 – ELECTRICAL MEASUREMENTS AT ROOM TEMPERATURE

No.	Characteristics	Symbol	ESCC 3202 Test Method and Condition	Limits	
				Min.	Max.
1	Isolation	ISO	Para. 9.7.1.2	Table 1(a) Column 5	
2	Insertion Loss	IL	Para. 9.7.1.3	Table 1(a) Column 6	
3	Return Loss Input Output	RL _{IN} RL _{OUT}	Para. 9.7.1.4	Table 1(a) Column 7	

TABLE 3 - ELECTRICAL MEASUREMENTS AT HIGH AND LOW TEMPERATURES

No.	Characteristics	Symbol	ESCC 3202 Test Method and Condition	Limits	
				Min.	Max.
1	Isolation	ISO	Para. 9.7.1.2	Table 1(a) Column 5	
2	Insertion Loss	IL	Para. 9.7.1.3	Table 1(a) Column 6	
3	Return Loss Input Output	RL _{IN} RL _{OUT}	Para. 9.7.1.4	Table 1(a) Column 7	

FIGURE 4 - CIRCUITS FOR ELECTRICAL MEASUREMENTS

Not applicable.

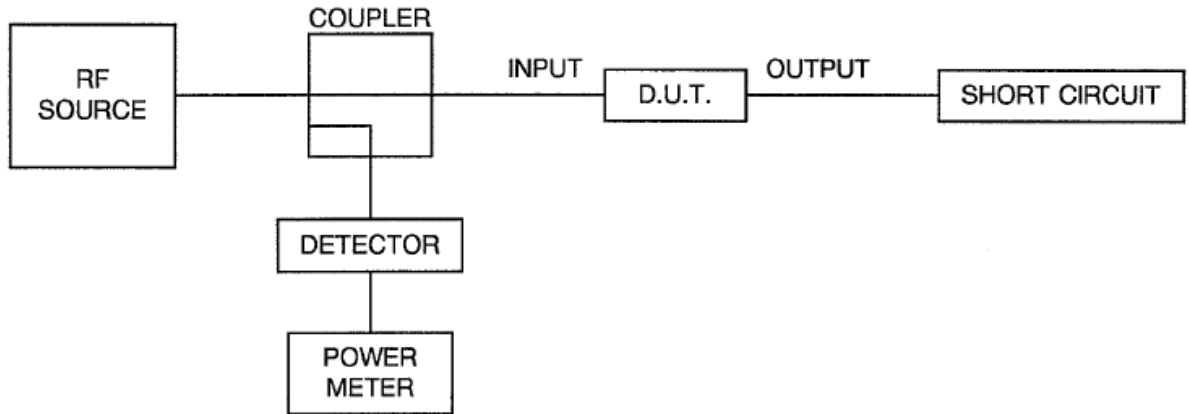
TABLE 4 - PARAMETER DRIFT VALUES

Not applicable.

TABLE 5 - CONDITIONS FOR OPERATING LIFE TEST

No.	Characteristics	Symbol	Condition	Unit
1	Centre Frequency	f _c	Table 1(a) Column 3	GHz
2	Input Power	P	0.5	W
3	Ambient Temperature	T _{amb}	Higher Temperature of Table 1(a) Column 8	°C

FIGURE 5 - ELECTRICAL CIRCUIT FOR OPERATING LIFE TEST



4.8 ENVIRONMENTAL AND ENDURANCE TESTS (CHARTS IV AND V OF ESCC GENERIC SPECIFICATION NO. 3202)

4.8.1 Measurements and Inspections on Completion of Environmental Tests

The parameters to be measured and inspections to be performed on completion of environmental tests are scheduled in Table 6. Unless otherwise stated, the measurements shall be performed at $T_{amb} = +22 \pm 3 \text{ }^\circ\text{C}$.

4.8.2 Measurements and Inspections at Intermediate Points and on Completion of Endurance Tests

The parameters to be measured and inspections to be performed during endurance tests are scheduled in Table 6. Unless otherwise stated, the measurements shall be performed at $T_{amb} = +22 \pm 3 \text{ }^\circ\text{C}$.

4.8.3 Conditions for Operating Life Tests (Part of Endurance Testing)

The requirements for operating life testing are specified in Section 9 of ESCC Generic Specification No. 3404. The conditions for operating life testing shall be as specified in Table 5(b) of this specification.

4.8.4 Electrical Circuits for Operating Life Tests

Circuits for use in performing the operating life tests are shown in Figure 5 of this specification.

TABLE 6 - MEASUREMENTS AND INSPECTIONS ON COMPLETION OF ENVIRONMENTAL TESTS AND AT INTERMEDIATE POINTS AND ON COMPLETION OF ENDURANCE TESTING

No.	ESCC Generic Specification No. 3202		Measurements and Inspections		Symbol	Limits	Unit
	Environmental And Endurance Tests (1)	Test Method and Conditions	Identification	Conditions			
01	Rapid Change of Temperature	Para. 9.4	Electrical Measurements Visual Examination	Table 2 -		Table 1(a) -	
02	Vibration	Para. 9.5	Electrical Measurements Visual Examination	Table 2 -		Table 1(a) -	
03	Shock or Bump	Para. 9.16	Electrical Measurements Visual Examination	Table 2 -		Table 1(a) -	
04	Permanence of Marking	Para. 9.17	Visual Examination	-		-	
05	Climatic Sequence Dry Heat Cold Test Low Air Pressure Damp Heat	Para. 9.18 Para. 9.18.2 Para. 9.18.4 Para. 9.18.5 Para. 9.18.6	Electrical Measurements Electrical Measurements 3202, Para. 9.18.5 Electrical Measurements	Table 3 Table 3 - Table 2		Table 1(a) Table 1(a) 3202, Para. 9.18.5 Table 1(a)	
06	Corrosion	Para. 9.19	Visual Examination	-		-	
07	Coupling Proof Torque	Para. 9.8	Not applicable	-		-	
08	Endurance	Para. 9.20	Not applicable	-		-	
09	Solderability	Para. 9.21	Visual Examination	-		-	
10	Robustness of Terminations	Para. 9.22	Visual Examination	-		-	
11	Seal Test	Para. 9.6	Not applicable	-		-	
12	Damp Heat	Para. 9.23	Electrical Measurements Visual Examination	Table 2 -		Table 1(a) -	
13	Operating Life	Para. 9.24.1 Para. 9.24.4 Para. 9.24.5	Init. Elec. Measurements Inter. Elec. Measurements Final Elec. Measurements	Table 2 Table 2 Table 2		Table 1(a) Table 1(a) Table 1(a)	
14	Mating and Unmating Forces	Para. 9.9	Visual Examination	-		-	
15	Contact Engagement and Separation Forces	Para. 9.13	Visual Examination	-		-	

NOTES

1. The tests in this table refer to either Chart IV or V and shall be used as applicable.