

FIGURE 2 – PHYSICAL DIMENSIONS

FIGURE 2(a) - STRAIGHT INPUT TERMINAL

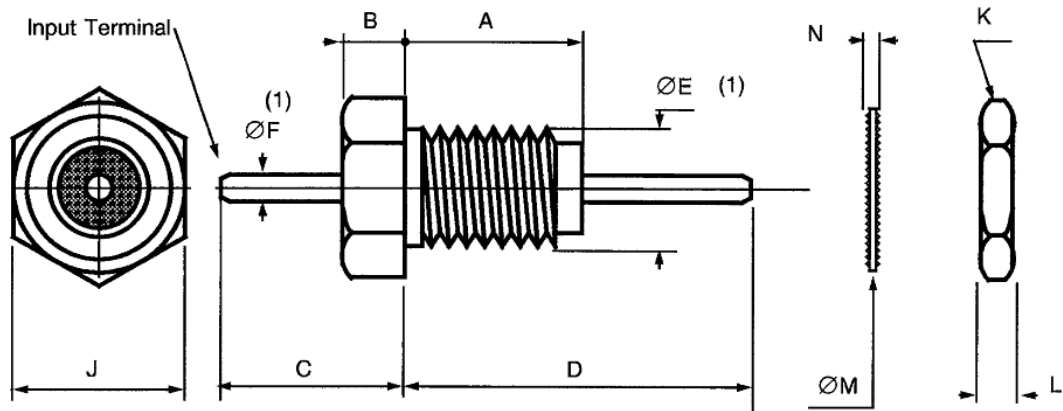
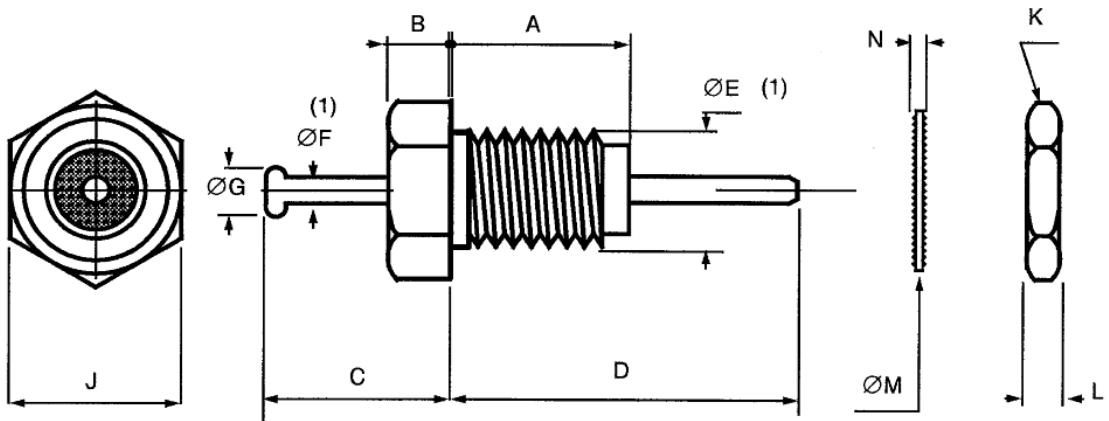


FIGURE 2(b) - BUTTON INPUT TERMINAL



Symbol	Case Size (mm)							
	1		2		3		4	
	Min	Max	Min	Max	Min	Max	Min	Max
A	6.9	7.1	3.4	3.6	7.8	8.4	3.4	3.6
B	2.4	2.6	1.5	1.7	3.5	4.1	1.5	1.7
C	7	12	3.5	4.5	8	9	8	13
D	17	19	5.5	6.5	13	14	8	13
ØE	See Table 1(a)		See Table 1(a)		See Table 1(a)		See Table 1(a)	
ØF	0.72	0.88	0.72	0.88	0.72	0.88	0.72	0.88
ØG	1	1.4	1	1.4	1	1.4	1	1.4
J	-	5	-	5	-	5	-	5
K	-	6	-	6	-	6	-	6
L	-	2.5	-	1.6	-	2.5	-	1.6
ØM	-	6.5	-	6.5	-	6.5	-	6.5
N (2)	-	0.7	-	0.7	-	0.7	-	0.7

NOTES:

1. Lead finish shall commence not more than 1.5mm from encapsulant.
2. The washer is an external fan lock washer.