

**TABLE OF CONTENTS**

1	GENERAL	5
1.1	SCOPE	5
1.2	TYPE VARIANTS	5
1.3	MAXIMUM RATINGS	5
1.4	PARAMETER DERATING INFORMATION	5
1.5	PHYSICAL DIMENSIONS	5
2	APPLICABLE DOCUMENTS	5
3	TERMS, DEFINITIONS, ABBREVIATIONS, SYMBOLS AND UNITS	5
4	REQUIREMENTS	29
4.1	GENERAL	29
4.2	DEVIATIONS FROM GENERIC SPECIFICATION	29
4.2.1	Deviations from Special In-Process Controls	29
4.2.2	Deviations from Final Production Tests (Chart II)	29
4.2.3	Deviations from Burn-in and Electrical Measurements (Chart III)	29
4.2.4	Deviations from Qualification, Environmental and Endurance Tests (Chart IV)	29
4.2.5	Deviations from Lot Acceptance Tests (Chart V)	29
4.3	MECHANICAL REQUIREMENTS	29
4.3.1	Dimension Check	29
4.3.2	Weight	29
4.3.3	Torque Value	29
4.4	MATERIALS AND FINISHES	30
4.4.1	Screw Lock Assemblies (Jackpost, Jackscrew)	30
4.4.2	Clips	30
4.4.3	Backshells	30
4.4.4	Dust Caps	30
4.5	MARKING	30
4.5.1	General	30
4.5.2	The ESCC Component Number	30
4.5.3	Traceability Information	30
4.6	ELECTRICAL MEASUREMENTS	30
4.7	SCREENING TESTS (TABLES 4 AND 5)	30
4.8	ENVIRONMENTAL AND ENDURANCE TESTS	31

Type Variants	Descriptions	Applicable Shell Sizes	Weight Max (g)	Torque Values (Nm)		Remarks
				Min	Max	
52	Straight backshell with male jackscrews and clips	J	11.5	-	-	See Note 6
53	Straight backshell with female jackposts and nuts	H	7.5	-	-	See Note 5
54	Straight backshell with female jackposts and nuts	J	11.5	-	-	See Note 7
55	Angled backshell with male jackscrews and clips	H	9.5	-	-	See Note 4
56	Angled backshell with male jackscrews and clips	J	15.2	-	-	See Note 6
57	Angled backshell with female jackposts and nuts	H	9.5	-	-	See Note 5
58	Angled backshell with female jackposts and nuts	J	15.2	-	-	See Note 7
59	90° backshell with male jackscrews and clips	H	9.5	-	-	See Note 4
60	90° backshell with male jackscrews and clips	J	15.2	-	-	See Note 6
61	90° backshell with female jackposts and nuts	H	9.5	-	-	See Note 5
62	90° backshell with female jackposts and nuts	J	15.2	-	-	See Note 7
63	Dust Cap (Male)	A	N/A	-	-	
64	Dust Cap (Female)	A	N/A	-	-	
65	Dust Cap (Male)	B	N/A	-	-	
66	Dust Cap (Female)	B	N/A	-	-	
67	Dust Cap (Male)	C	N/A	-	-	
68	Dust Cap (Female)	C	N/A	-	-	
69	Dust Cap (Male)	D	N/A	-	-	
70	Dust Cap (Female)	D	N/A	-	-	
71	Dust Cap (Male)	E	N/A	-	-	
72	Dust Cap (Female)	E	N/A	-	-	
73	Dust Cap (Male)	F	N/A	-	-	
74	Dust Cap (Female)	F	N/A	-	-	
75	Dust Cap (Male)	G	N/A	-	-	
76	Dust Cap (Female)	G	N/A	-	-	

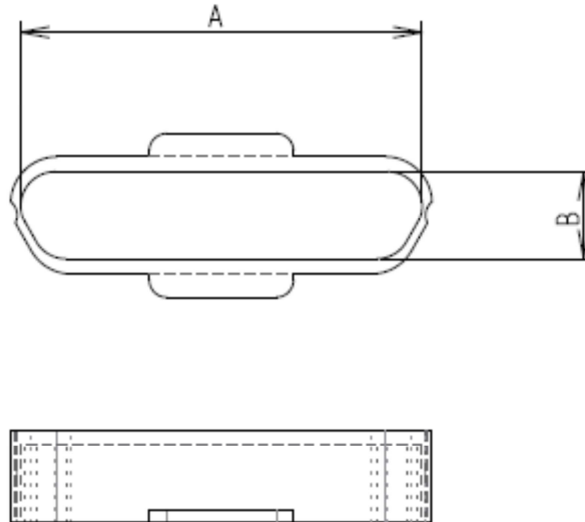
Type Variants	Descriptions	Applicable Shell Sizes	Weight Max (g)	Torque Values (Nm)		Remarks
				Min	Max	
77	Dust Cap (Male)	H	N/A	-	-	
78	Dust Cap (Female)	H	N/A	-	-	
79	Dust Cap (Male)	J	N/A	-	-	
80	Dust Cap (Female)	J	N/A	-	-	
81	Jackpost assembly for rear mounting on panel, Thickness Panel : 0.8 mm (screwlock, nut and lockwasher)	A, B, C, D, E, F, G and H	0.72	0.44 0.28 0.44	0.48 0.32 0.48	See Note 1 See Note 2 See Note 3
82	Jackpost assembly for rear mounting on panel, Thickness Panel : 1.2 mm (screwlock, nut and lockwasher)	A, B, C, D, E, F, G and H	0.71	0.44 0.28 0.44	0.48 0.32 0.48	See Note 1 See Note 2 See Note 3
83	Jackpost assembly for rear mounting on panel, Thickness Panel : 1.6 mm (screwlock, nut and lockwasher)	A, B, C, D, E, F, G and H	0.69	0.44 0.28 0.44	0.48 0.32 0.48	See Note 1 See Note 2 See Note 3
84	Jackpost assembly for rear mounting on panel, Thickness Panel : 2.4 mm (screwlock, nut and lockwasher)	A, B, C, D, E, F, G and H	0.66	0.44 0.28 0.44	0.48 0.32 0.48	See Note 1 See Note 2 See Note 3
85	Jackpost assembly for rear mounting on panel, Thickness Panel : 3.2 mm (screwlock, nut and lockwasher)	A, B, C, D, E, F, G and H	0.62	0.44 0.28 0.44	0.48 0.32 0.48	See Note 1 See Note 2 See Note 3
86	Jackpost assembly for rear mounting on panel, Thickness Panel : 0.8 mm (screwlock, nut and lockwasher)	J	1.08	0.6 0.4 0.4	0.66 0.44 0.66	See Note 1 See Note 2 See Note 3
87	Jackpost assembly for rear mounting on panel, Thickness Panel : 1.2 mm (screwlock, nut and lockwasher)	J	1.05	0.6 0.4 0.4	0.66 0.44 0.66	See Note 1 See Note 2 See Note 3
88	Jackpost assembly for rear mounting on panel, Thickness Panel : 1.6 mm (screwlock, nut and lockwasher)	J	1.03	0.6 0.4 0.4	0.66 0.44 0.66	See Note 1 See Note 2 See Note 3
89	Jackpost assembly for rear mounting on panel, Thickness Panel : 2.4 mm (screwlock, nut and lockwasher)	J	0.99	0.6 0.4 0.4	0.66 0.44 0.66	See Note 1 See Note 2 See Note 3
90	Jackpost assembly for rear mounting on panel, Thickness Panel : 3.2 mm (screwlock, nut and lockwasher)	J	0.95	0.6 0.4 0.4	0.66 0.44 0.66	See Note 1 See Note 2 See Note 3
91	Jackpost assembly for PCB mounting straight spills/PC tails, (screwlock, nut, lockwasher and spacer)	A, B, C, D, E, F, G and H	1.2	0.44 0.28 0.44	0.48 0.32 0.48	See Note 1 See Note 2 See Note 3

Type Variants	Descriptions	Applicable Shell Sizes	Weight Max (g)	Torque Values (Nm)		Remarks
				Min	Max	
92	Jackpost assembly for PCB mounting straight spills/PC tails, (screwlock, nut, lockwasher and spacer)	J	2.3	0.6 0.4 0.6	0.66 0.48 0.66	See Note 1 See Note 2 See Note 3
93	Jackpost assembly for Connector with Rear Grommet Version, (screwlock, nut and lockwasher)	A, B, C, D, E, F, G and H	0.9	0.44 0.28 0.44	0.48 0.32 0.48	See Note 1 See Note 2 See Note 3
94	Jackpost assembly for Connector with Rear Grommet Version, (screwlock, nut and lockwasher)	J	1.6	0.6 0.4 0.6	0.66 0.48 0.66	See Note 1 See Note 2 See Note 3
95	Jackpost assembly for Savers Connector (screwlock, and retaining ring)	A, B, C, D, E, F, G and H	0.9	0.44 0.28 0.44	0.48 0.32 0.48	See Note 1 See Note 2 See Note 3
96	Jackpost assembly for Savers Connector, (screwlock, and retaining ring)	J	1.8	0.6 0.4 0.6	0.66 0.48 0.66	See Note 1 See Note 2 See Note 3
97	Bracket for mouting on PCB with 90° bent contacts	A, B, C, D, E, F	085	0.44	0.48	
98	Bracket for mouting on PCB with 90° bent contacts	G and H	1	0.44	0.48	
99	Bracket for mouting on PCB with 90° bent contacts	J	2.45	0.6	0.66	

NOTES:

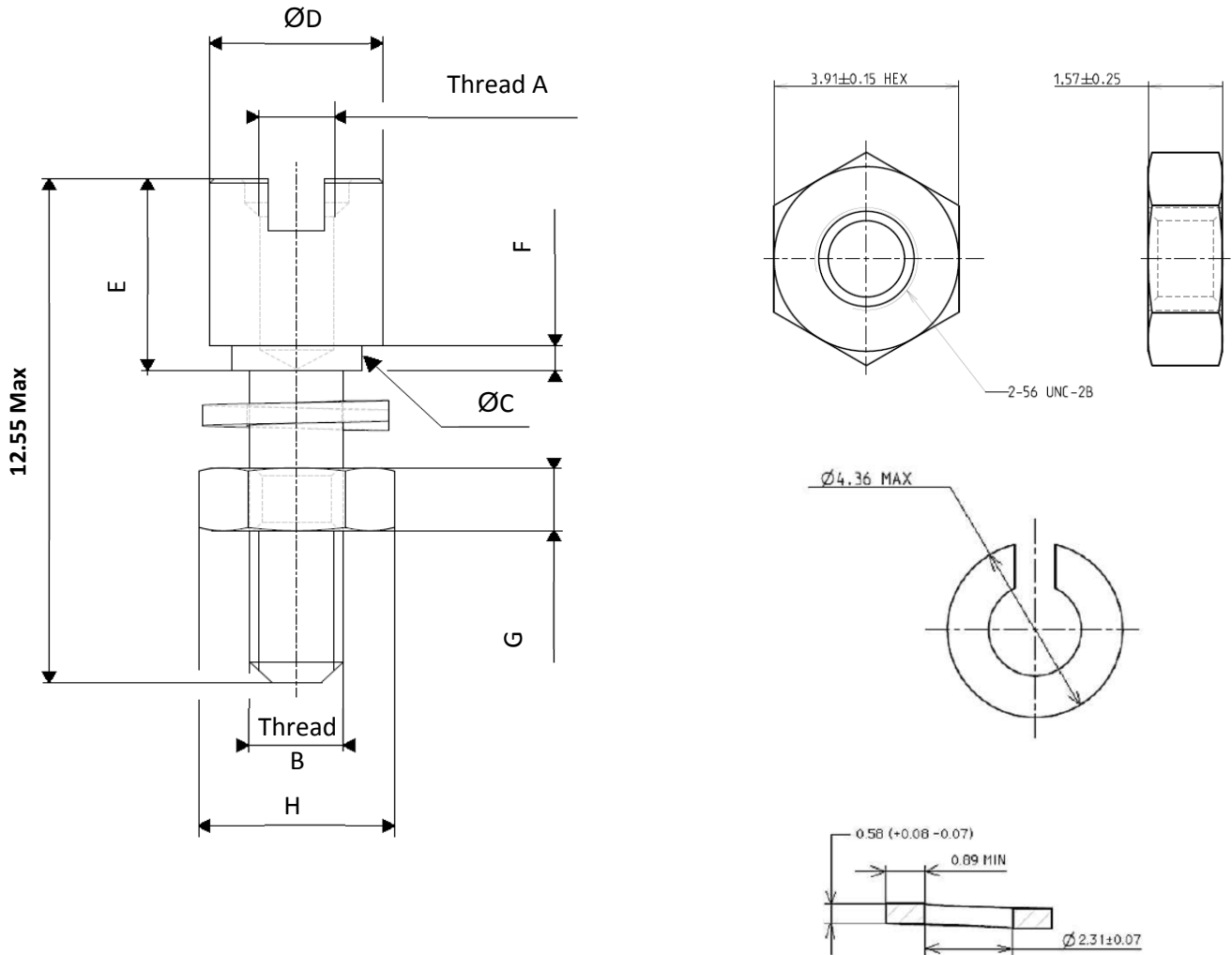
1. These torque values apply to the male side of the jackpost.
2. These torque values apply to the female side of the jackpost.
3. These torque values apply to the nut.
4. Weight of backshell without male jackscrews and clips. The maximum weight of one clip and one screw is 1.12g.
5. Weight of backshell without female jackposts and nuts. The maximum weight of jackpost and one nut is 0.65g.
6. Weight of backshell without male jackscrews and clips. The maximum weight of one clip and one screw is 1.75g.
7. Weight of backshell without female jackposts and nuts. The maximum weight of one jackpost and one nut is 0.95g.

FIGURE 2(m) - VARIANTS 63 TO 80



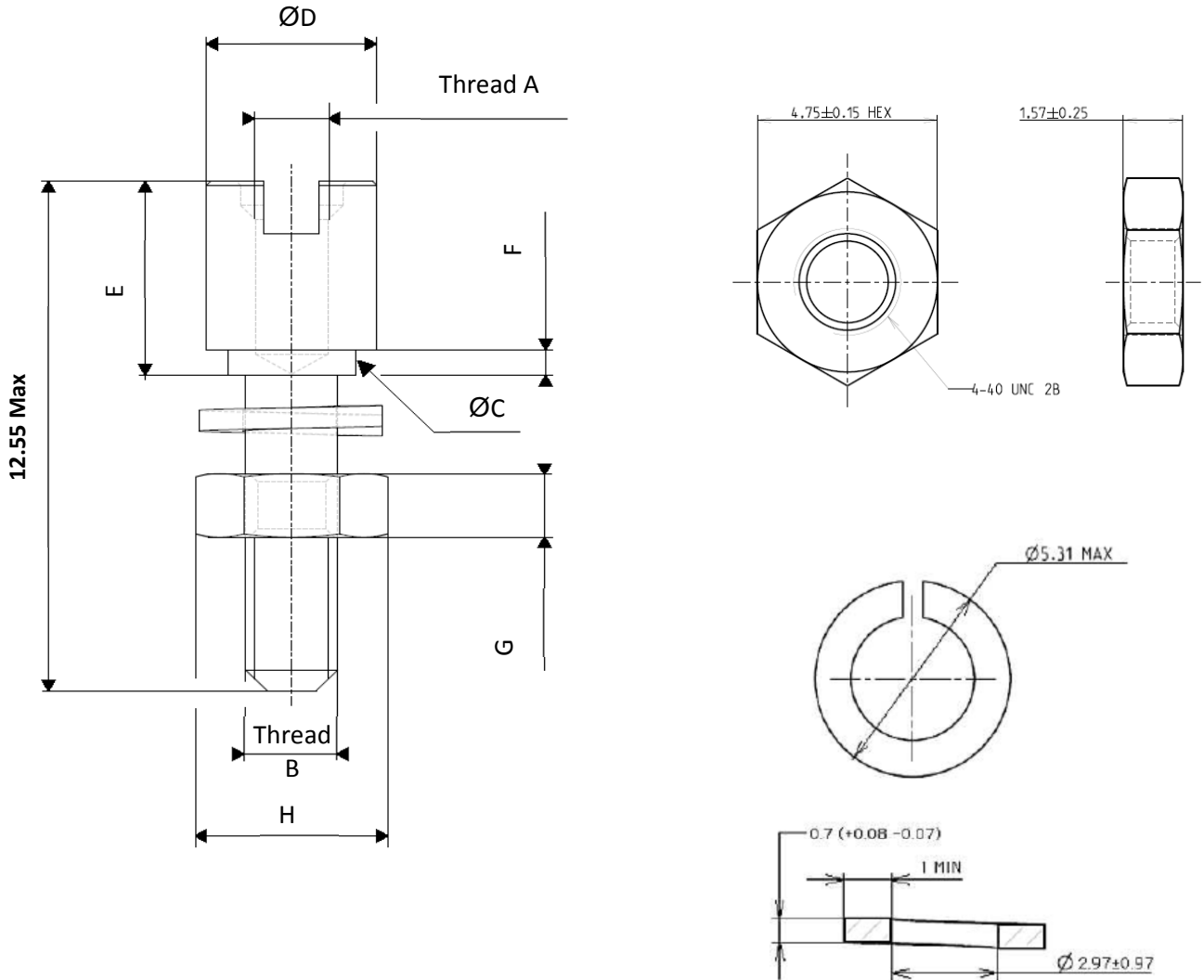
Variants	63	64	65	66	67	68	69	70	71	72	73	74	75	76	77	78	79	80
A±0.25	8	9.8	11.8	13.6	15.6	17.4	18.2	19.9	22	23.7	25.8	27.6	24.5	26.3	37.9	38.8	45.2	46.8
B±0.25	4.7	6.4	4.7	6.4	4.7	6.4	4.7	6.4	4.7	6.4	4.7	6.4	5.8	7.4	5.8	7.4	9.35	11

FIGURE 2(n) - VARIANTS 81 TO 85



Variant	A	B	ØC Max	ØD Max.	E	F Max	G Max.	H Max.
81	2-56 UNC-2B	2-56 UNC-2A	3	4.1	4.70/4.83	0.615	1.82	4.06
82	2-56 UNC-2B	2-56 UNC-2A	3	4.1	4.70/4.83	1.09	1.82	4.06
83	2-56 UNC-2B	2-56 UNC-2A	3	4.1	4.70/4.83	1.45	1.82	4.06
84	2-56 UNC-2B	2-56 UNC-2A	3	4.1	4.70/4.83	2.23	1.82	4.06
85	2-56 UNC-2B	2-56 UNC-2A	3	4.1	4.70/4.83	3.05	1.82	4.06

FIGURE 2(o) - VARIANTS 86 TO 90



Variant	A	B	ØC Max	ØD Max.	E	F Max	G Max.	H Max.
86	4-40 UNC-2B	4-40 UNC-2A	3.6	4.71	4.45/4.70	0.615	1.82	4.9
87	4-40 UNC-2B	4-40 UNC-2A	3.6	4.71	4.45/4.70	1.09	1.82	4.9
88	4-40 UNC-2B	4-40 UNC-2A	3.6	4.71	4.45/4.70	1.45	1.82	4.9
89	4-40 UNC-2B	4-40 UNC-2A	3.6	4.71	4.45/4.70	2.23	1.82	4.9
90	4-40 UNC-2B	4-40 UNC-2A	3.6	4.71	4.45/4.70	3.05	1.82	4.9

FIGURE 2(p) - VARIANTS 91

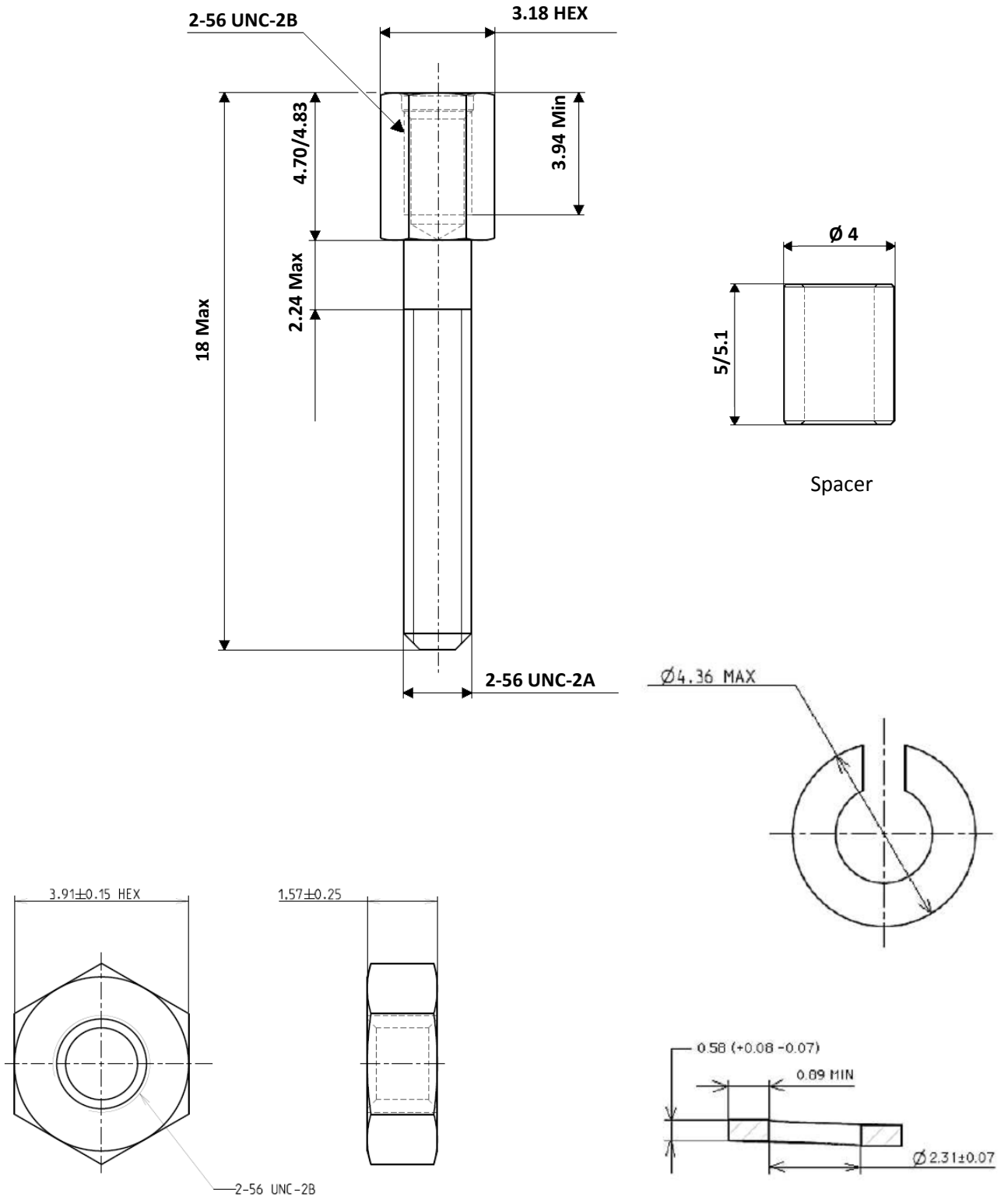


FIGURE 2(q) - VARIANT 92

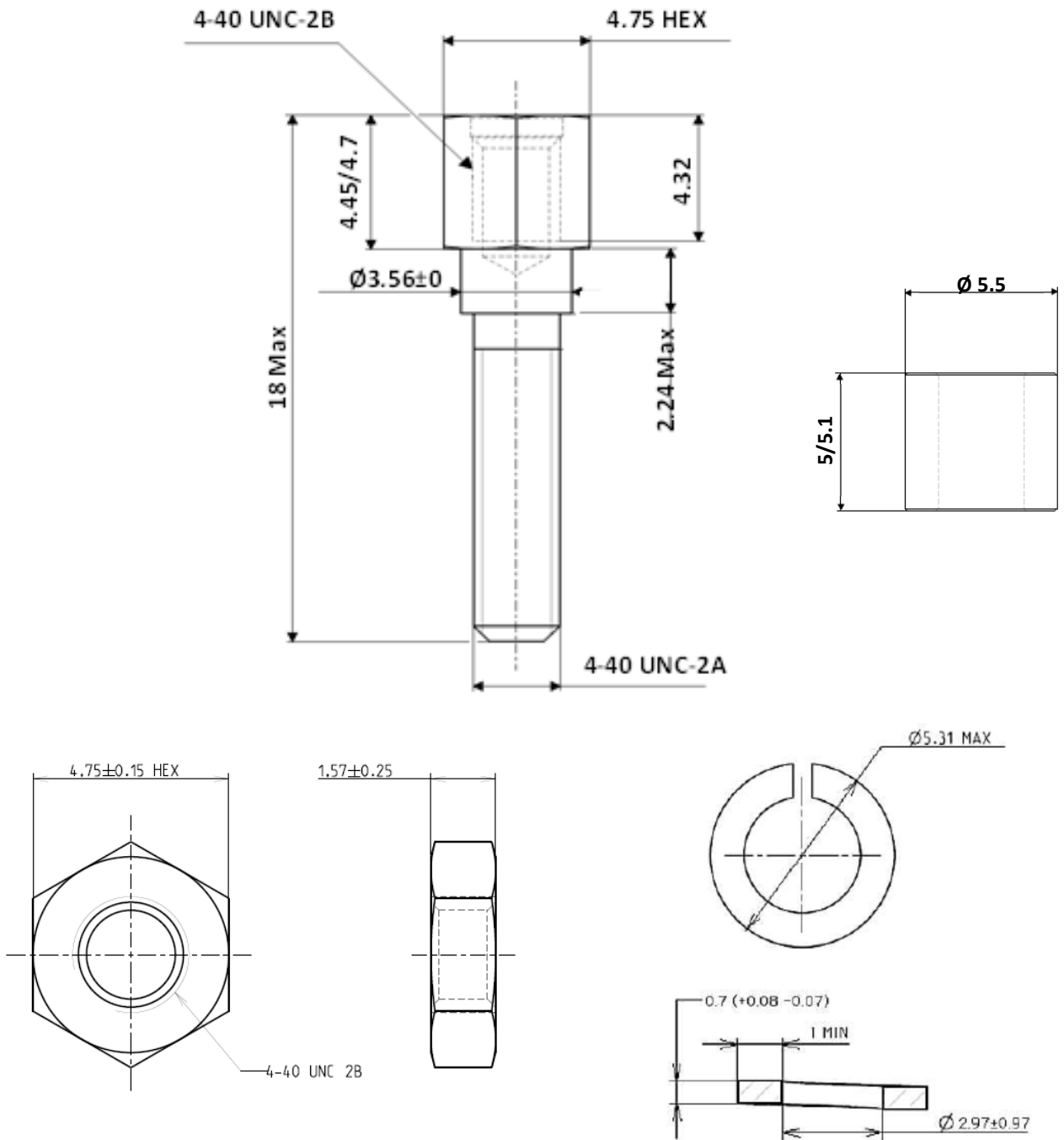


FIGURE 2(r) - VARIANTS 93 TO 94

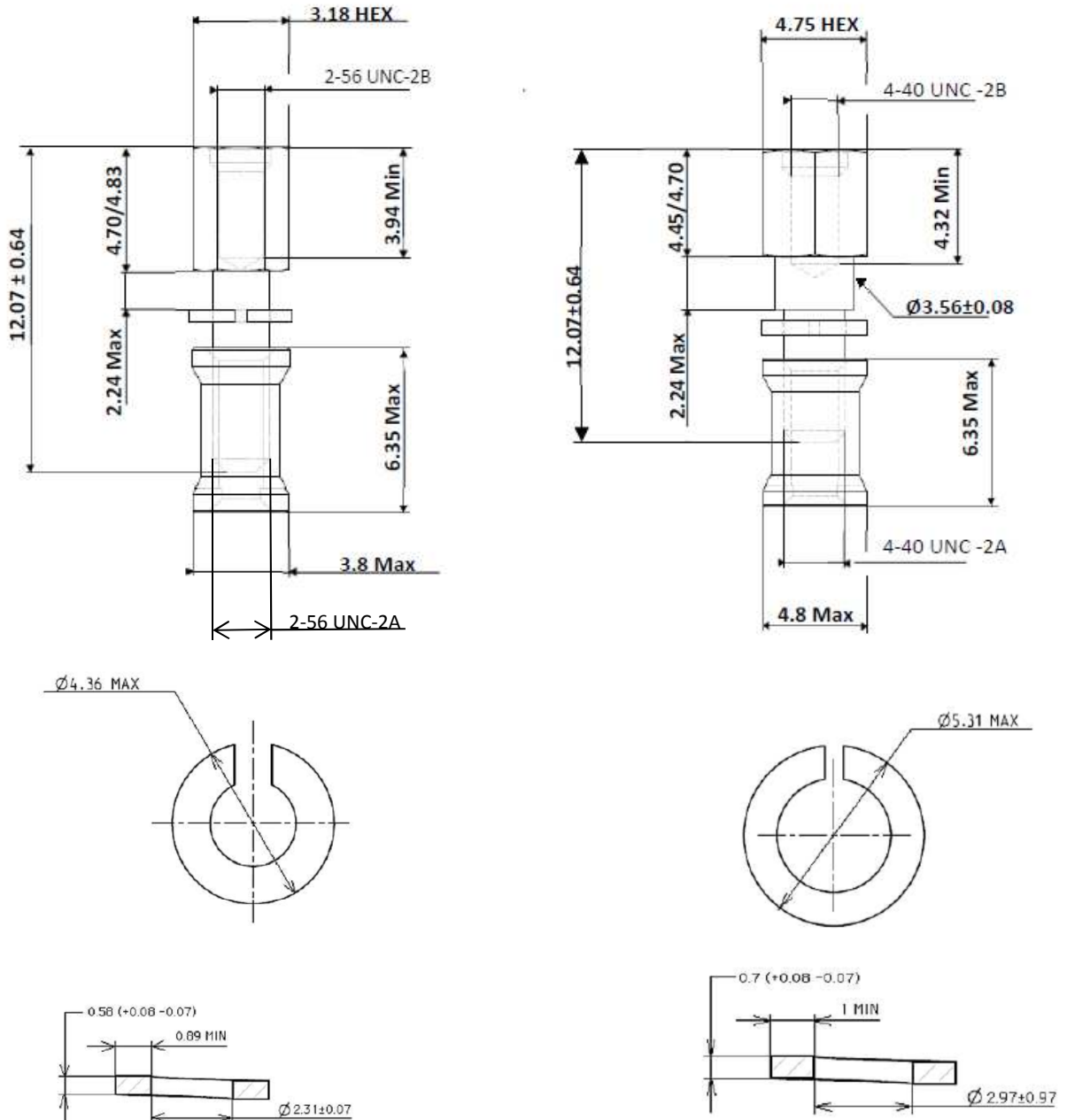


FIGURE 2(s) - VARIANTS 95 TO 96

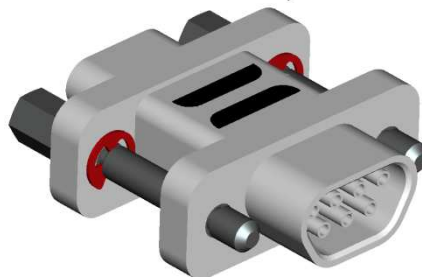
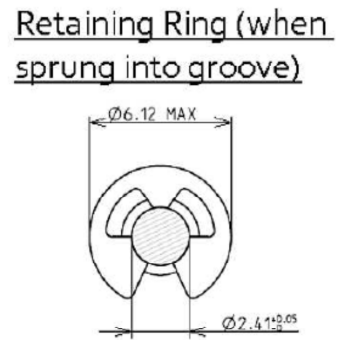
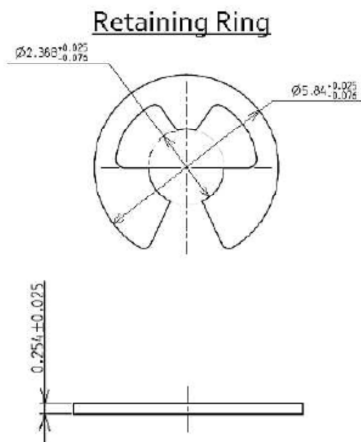
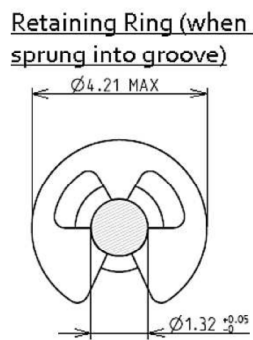
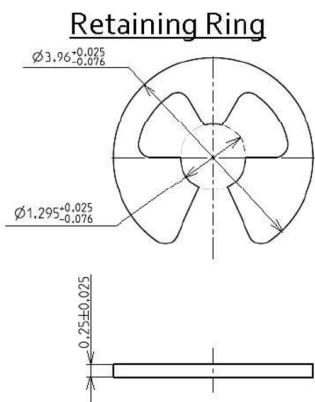
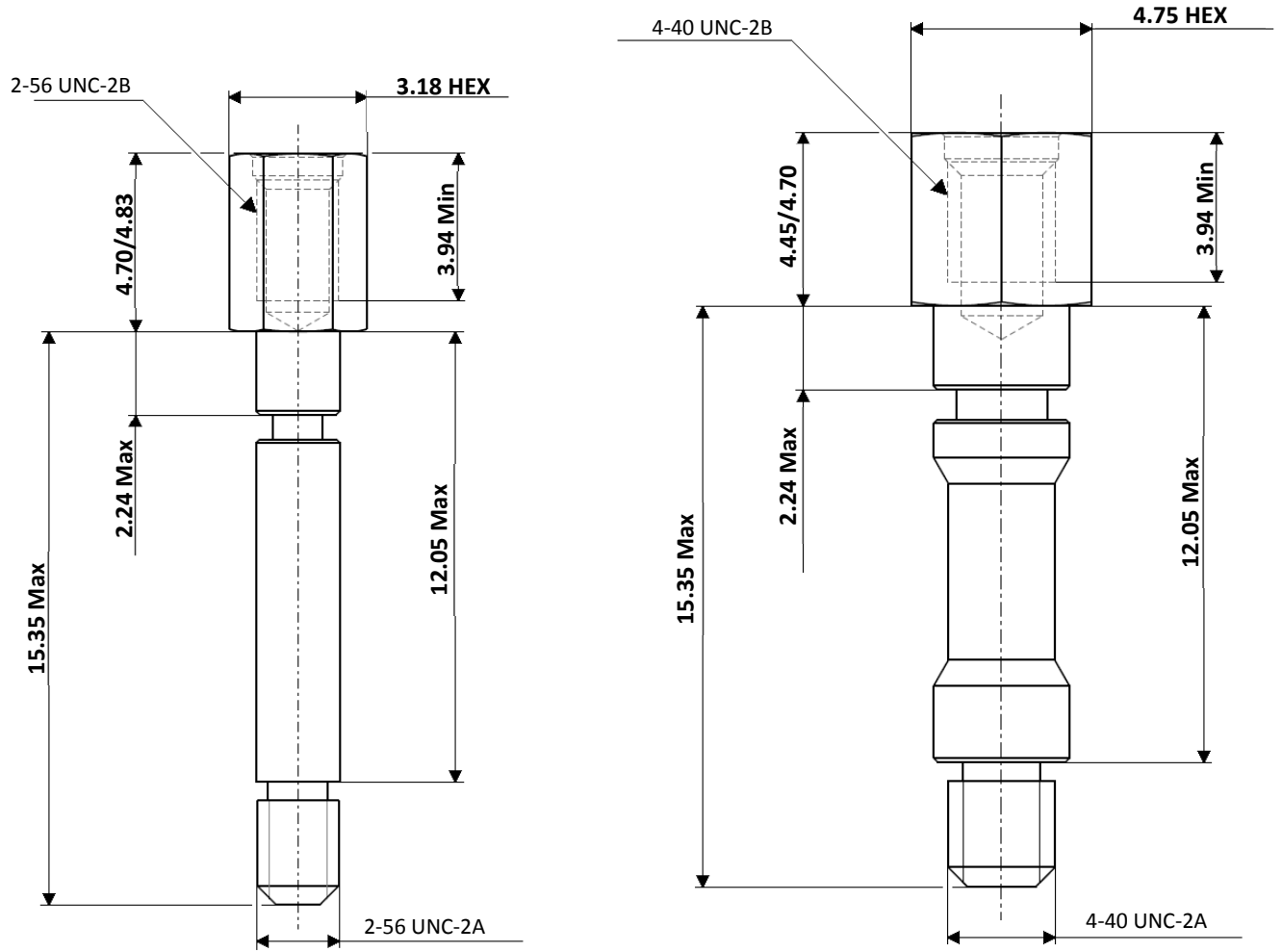
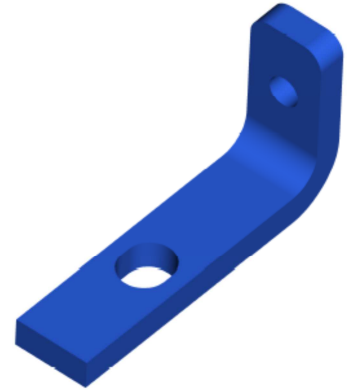
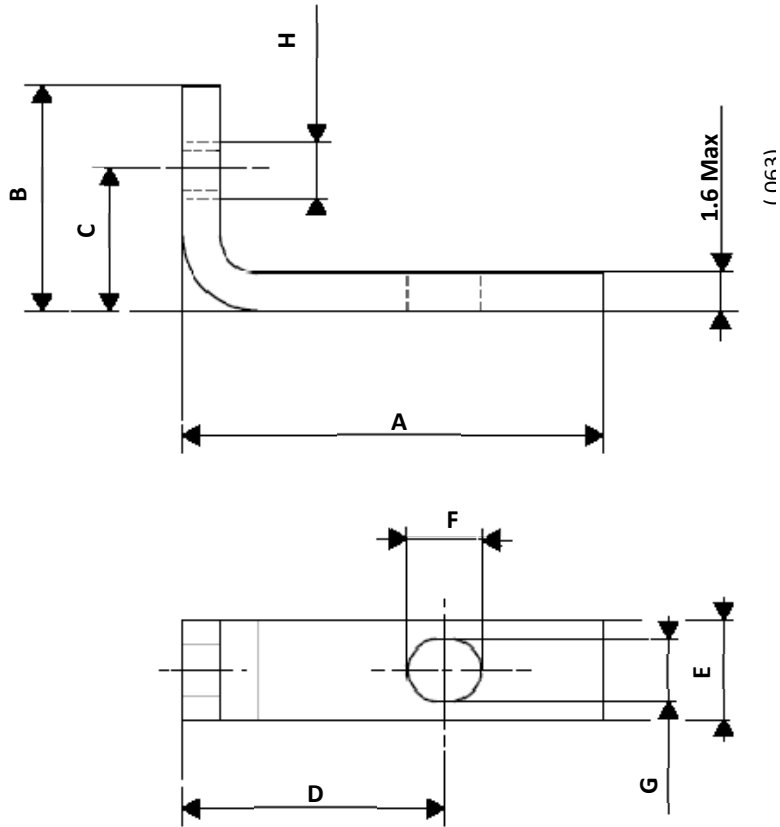


FIGURE 2(t) - VARIANTS 97 TO 99



Variant	A Max.	B Max.	C±0.10	D±0.10	E±0.10	F Max.	G	H
97	14.10	8.60	5.0	9.17	4.0	3.15	2.44 ±0.10	2-56 UNC-2B
98	16.90	9.10	5.6	10.44	4.0	3.15	2.44 ±0.10	2-56 UNC-2B
99	23.10	13.10	7.35	13.13	6.50	4.20	3.15 ±0.15	4-40 UNC-2B

4 REQUIREMENTS

4.1 GENERAL

The complete requirements for procurement of the accessories specified herein are stated in this specification and ESCC Generic Specification No. 3401. Deviations from the Generic Specification, applicable to this specification only, are listed in Para. 4.2.

Deviations from the applicable Generic Specification and this Detail Specification, formally agreed with specific Manufacturers on the basis that the alternative requirements are equivalent to the ESCC requirements and do not affect the components' reliability, are listed in the appendices attached to this specification.

4.2 DEVIATIONS FROM GENERIC SPECIFICATION

4.2.1 Deviations from Special In-Process Controls

None.

4.2.2 Deviations from Final Production Tests (Chart II)

Only the following tests shall be performed:

Para. 9.6, Dimension Check.

Para. 9.7, External Visual Inspection. The magnification shall be X3.

4.2.3 Deviations from Burn-in and Electrical Measurements (Chart III)

Chart III is not applicable.

4.2.4 Deviations from Qualification, Environmental and Endurance Tests (Chart IV)

Chart IV is not applicable.

4.2.5 Deviations from Lot Acceptance Tests (Chart V)

Chart V is not applicable.

4.3 MECHANICAL REQUIREMENTS

4.3.1 Dimension Check

The dimensions of the accessories specified herein shall be verified in accordance with the requirements set out in Para. 9.6 of ESCC Generic Specification No. 3401 and Para. 4.2.2 of this specification; they shall conform to those shown in Figure 2.

4.3.2 Weight

The maximum weight of the accessories specified herein shall be as specified in Figure 2.

4.3.3 Torque Value

The torque value to be used for tightening the screws of the accessories specified herein shall be as specified in Table 1(a).

4.4 MATERIALS AND FINISHES

The materials and finishes shall be as specified herein. Where a definite material is not specified, a material which will enable the components specified herein to meet the performance requirements of this specification shall be used. Acceptance or approval of any constituent material does not guarantee acceptance of the finished product.

4.4.1 Screw Lock Assemblies (Jackpost, Jackscrew)

These shall be made of passivated stainless steel except for the female jackposts for backshell shell size J: The material shall be brass and the finish shall be electroless nickel with a minimum thickness of 10µm.

4.4.2 Clips

These shall be made of passivated stainless steel.

4.4.3 Backshells

The material shall be aluminium alloy and the finish shall be 0.7µm minimum of gold over a copper or electroless nickel base layer with a minimum thickness of 10µm.

4.4.4 Dust Caps

Material: Red, Black or White polypropylene or polyethylene.

4.5 MARKING

4.5.1 General

The marking of components delivered to this specification shall be in accordance with the requirements of ESCC Basic Specification No. 21700 and the following paragraphs. Each component shall be marked in respect of:

(a) The ESCC Component Number. (b) Traceability Information.

These components being too small to accommodate the marking specified above, the ESCC marking information shall accompany the component in its primary package.

4.5.2 The ESCC Component Number

The ESCC Component Number shall be constituted and marked as follows: Example:

340108401B

Detail Specification Number: 3401084

Type Variant (See Figure 1(a)): 01

Testing Level: B

4.5.3 Traceability Information

Traceability information shall be marked in accordance with ESCC Basic Specification No. 21700.

4.6 ELECTRICAL MEASUREMENTS

Not applicable.

4.7 SCREENING TESTS (TABLES 4 AND 5)

Not applicable.

4.8 ENVIRONMENTAL AND ENDURANCE TESTS
Not applicable.