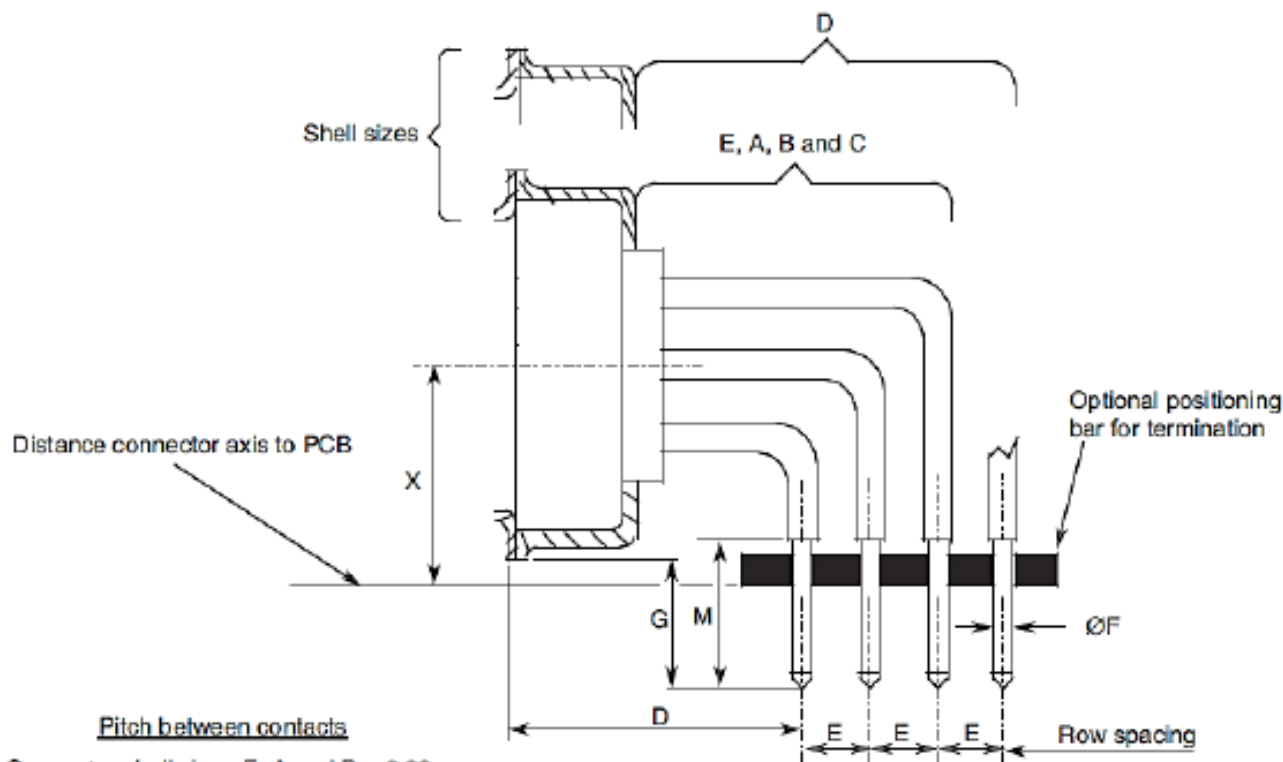


GAUGE 22 90° PCB SOLDER CONTACTS (FOR SIZES E, A, B, C CODE 1C0N AND SIZE D CODE 1D0N)



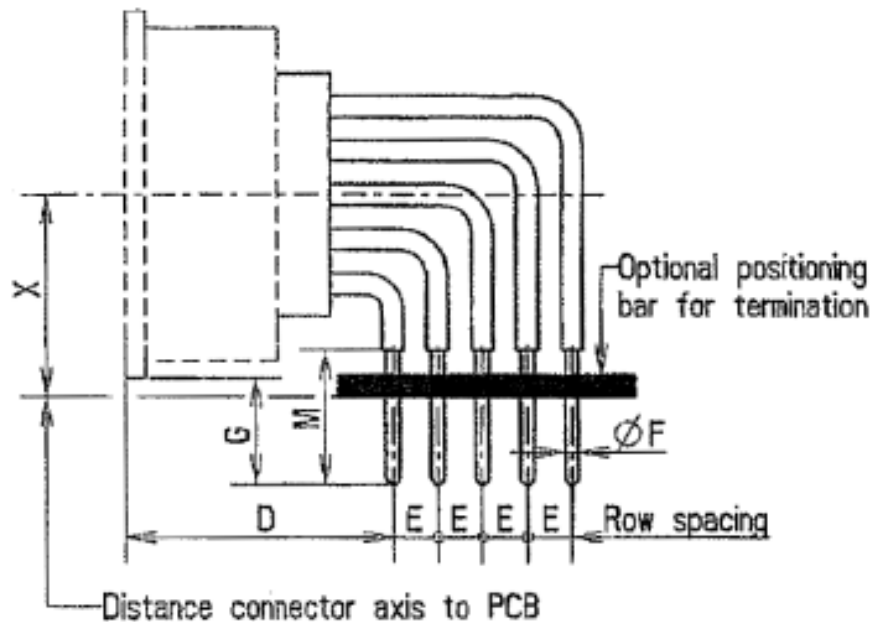
Pitch between contacts
 Connector shell sizes E, A and B = 2.29.
 Connector shell sizes C and D = 2.41.

Code	Symbol/Dim.	D		E		ØF	G	M	X (7) (8)
		(2) (3)	(4)	1C0N (5)	1D0N (6)				
1C0N	min.	11.98	12.18	1.93	-	0.5	4.7	5.3	7.2
	max.	12.48	12.68	2.03	-	0.65	5,7	5.4	7.5
1D0N	min.	11.98	12.18	-	2.03	0.5	4.7	5.3	8.6
	max.	12.48	12.68	-	2.13	0.65	5,7	5.4	8.8

NOTES:

1. All dimensions are in mm.
2. Connectors equipped with female contacts all sizes.
3. Connectors equipped with male contacts sizes E and A.
4. Connectors equipped with male contacts sizes B, C and D.
5. Typical = 1.98.
6. Typical = 2.08
7. For sizes E, A, B and C, Typical = 7.35.
8. For size D, Typical = 8.7.

GAUGE 22 90° PCB SOLDER CONTACTS (SIZE F CODE 1D0N)



Pitch between contacts

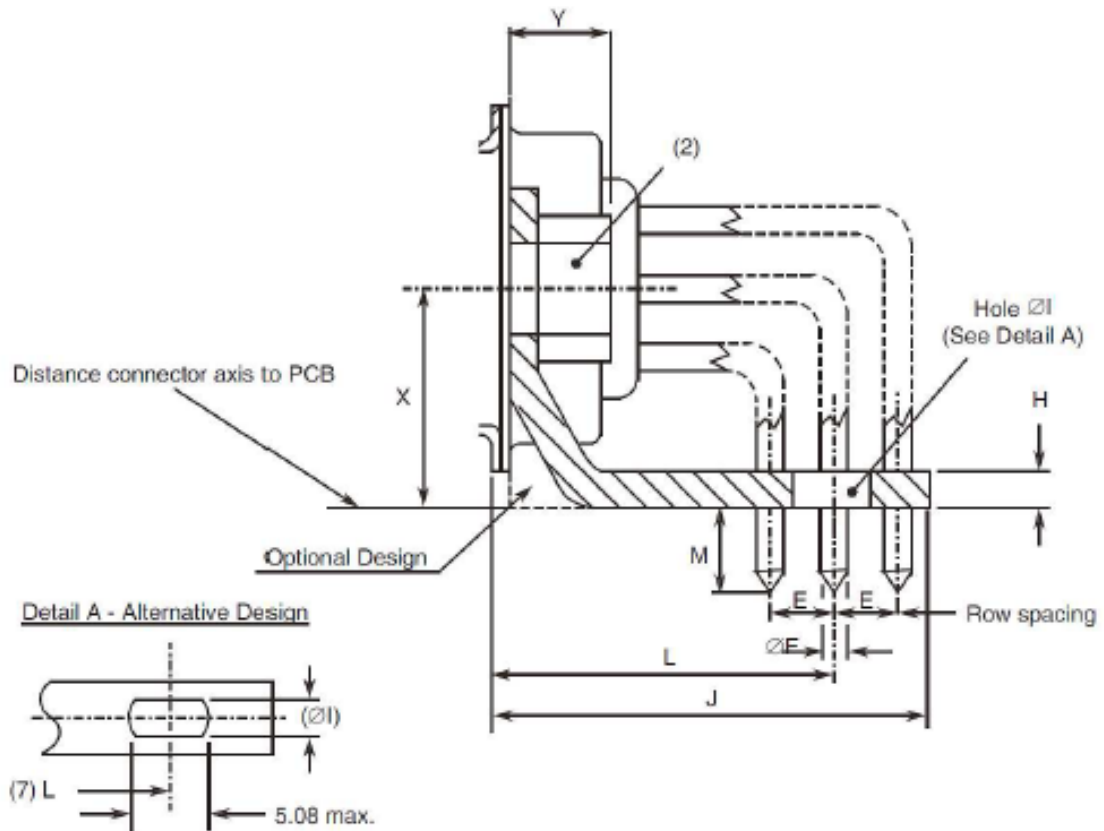
Connector shell size F = 2.41

Symbol/Dim.	<u>D</u>	E (2)	ØF	G	M	X (3)
min.	12.18	2.03	0.5	4.7	5.3	8.6
max.	12.68	2.13	0.65	5,7	5.4	8.8

NOTES:

1. All dimensions are in mm.
2. Typical = 2.08.
3. Typical = 8.7.

GAUGE 22 90° PCB SOLDER CONTACTS WITH 90° BRACKET AND SCREW LOCKS
(SIZES E, A, B AND C) (CODES 1C7N AND 1C9N)

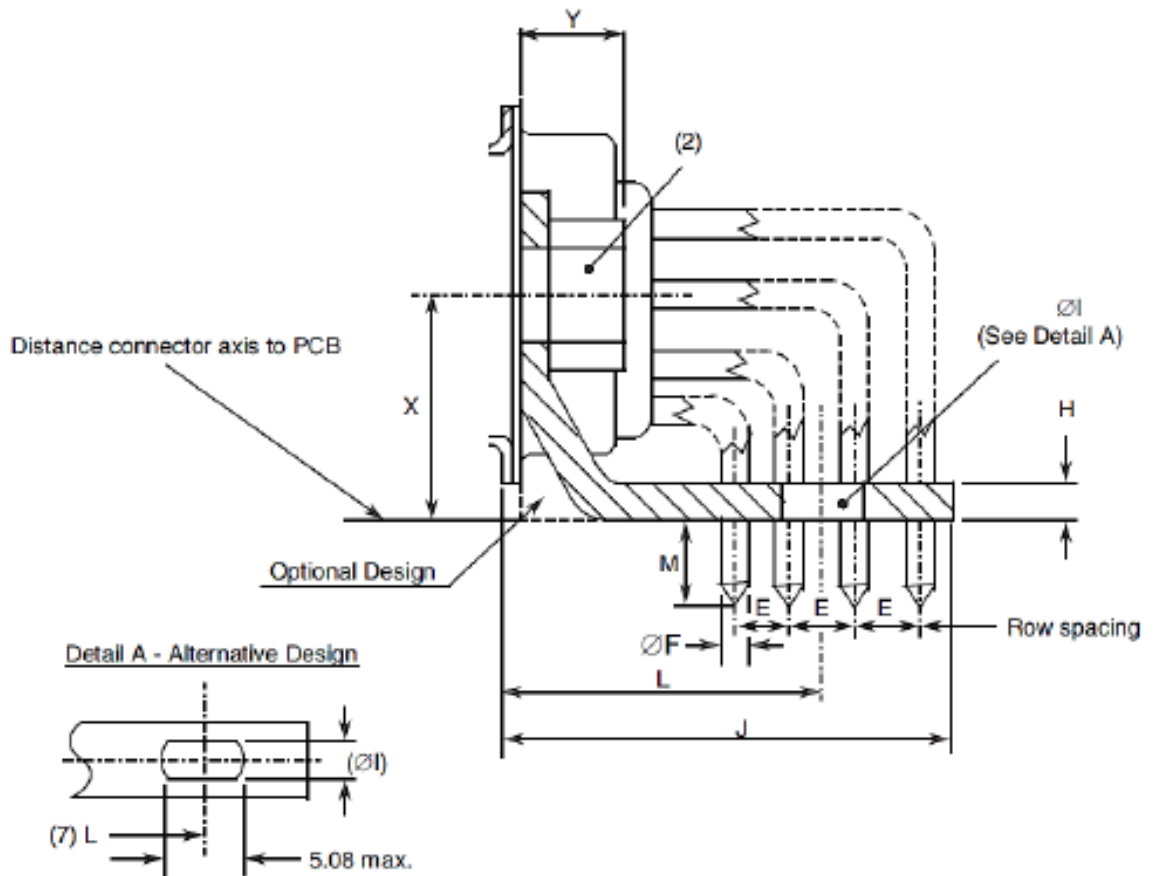


Symbol/ Dim.	E (3)	ØF	ØI	H	J		L		M	X (6)	Y
					(4)	(5)	1C7N 1C9N (4)	1C7N 1C9N (5)			
min.	1.93	0.5	3.12	1	-	-	14.11	14.31	3.6	7.2	-
max.	2.03	0.65	3.32	3.2	18.3	18.5	14.31	14.51	4,8	7.5	7

NOTES:

- All dimensions are in mm.
- Code 1C7N: Nut 4-40.
Code 1C9N: Nut M3.
- Typical = 1.98.
- Connectors equipped with female contacts all sizes and connectors equipped with male contacts sizes E and A.
- Connectors equipped with male contacts sizes B and C.
- Typical = 7.35.
- This alternative design takes into account the different possible values of L.

**GAUGE 22 90° PCB SOLDER CONTACTS WITH 90° BRACKET AND SCREW LOCKS
(SIZE D) (CODES 1D7N AND 1D9N)**

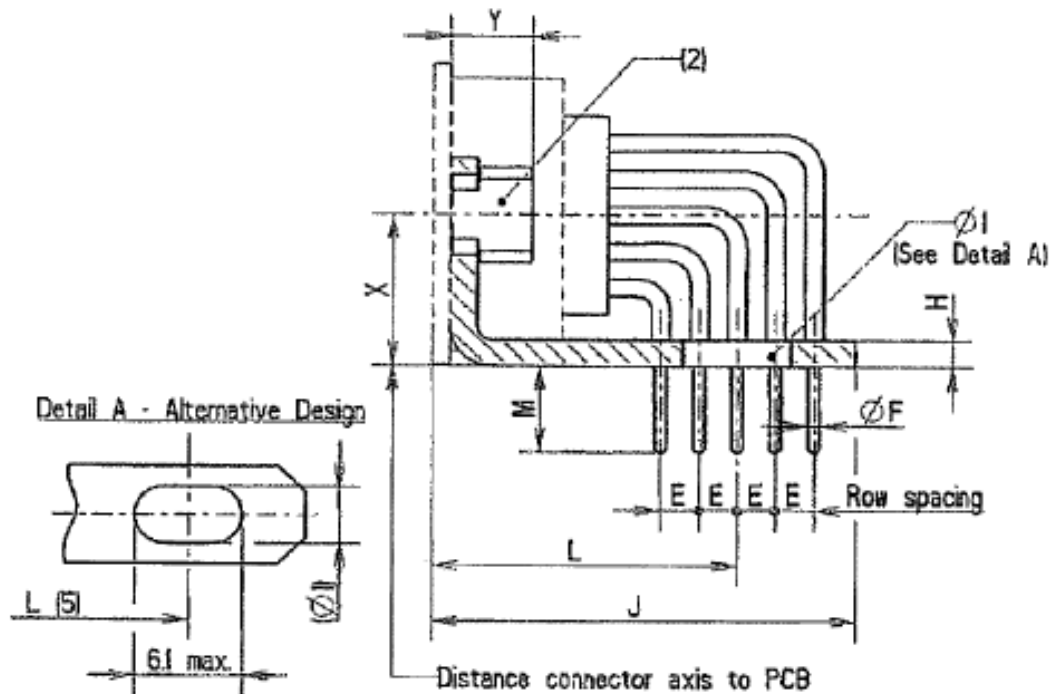


Symbol/ Dim.	E (3)	ØF	ØI	H	J		L		M	X (6)	Y
					(4)	(5)	1C7N 1C9N	1C7N 1C9N			
min.	2.03	0.5	3.12	1	-	-	15.25	15.45	3.6	8.6	-
max.	2.13	0.65	3.32	3.2	20.5	20.7	15.45	15.65	4,8	8.8	7

NOTES:

1. All dimensions are in mm.
2. Code 1D7N: Nut 4-40.
Code 1D9N: Nut M3.
3. Typical = 2.08.
4. Connectors equipped with female contacts.
5. Connectors equipped with male contacts.
6. Typical = 8.7.
7. This alternative design takes into account the different possible values of L.

**GAUGE 22 90° PCB SOLDER CONTACTS WITH 90° BRACKET AND SCREW LOCKS
(SIZE F) (CODE 1D7N AND 1D9N)**



Symbol/Dim.	E (3)	ØF	ØI	H	J	L	M	X (4)	Y
min.	2.03	0.5	3.12	1	-	16.15	4.6	8.6	-
max.	2.13	0.65	3.32	3.2	23.5	16.85	5,8	8.8	7

NOTES:

- All dimensions are in mm.
- Code 1D7N: Nut 4-40.
Code 1D9N: Nut M3.
- Typical = 2.08.
- Typical = 8.7.
- This alternative design takes into account the different possible values of L.
- Connectors equipped with female contacts all sizes and connectors equipped with male contacts sizes E and A.
- Connectors equipped with male contacts sizes B and C.
- Typical = 7.35.
- This alternative design takes into account the different possible values of L.