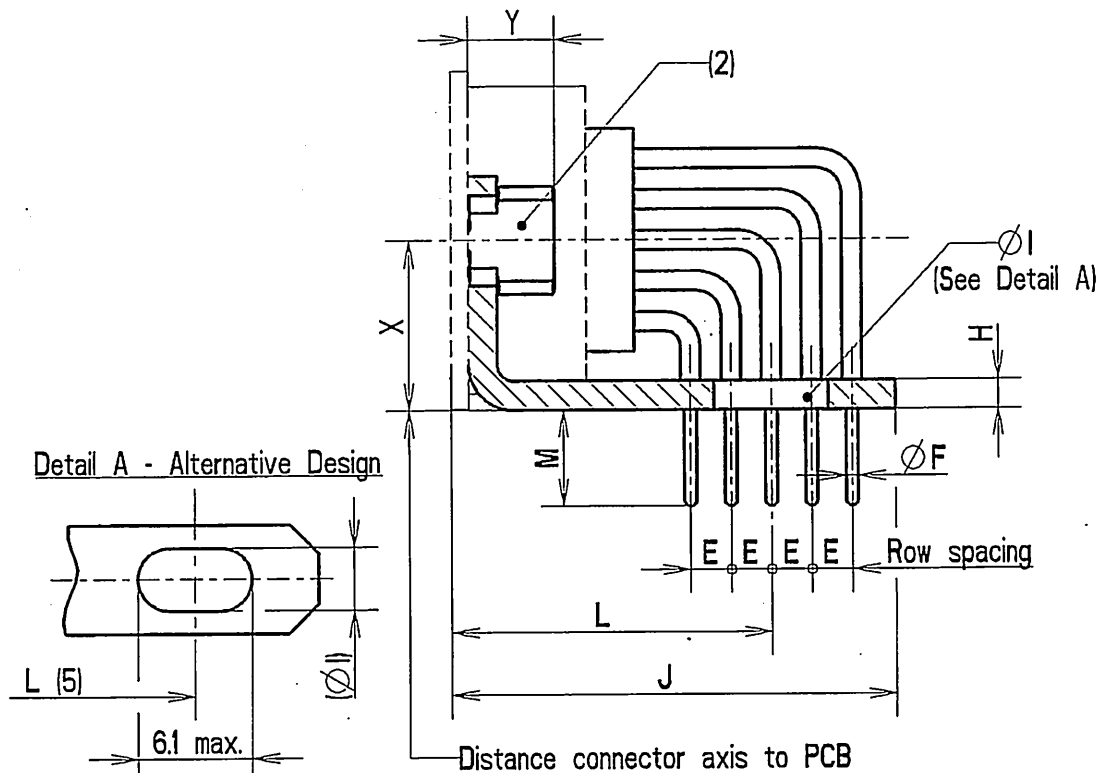


FIGURE 2 – PHYSICAL DIMENSIONS (CONTINUED)

FIGURE 2(c) – REAR END (CONTINUED)

Gauge 22 90° PCB Solder Contacts with 90° Brackets and Screw Locks (Size F)
(Code 1D7N and 1D9N)



Symbol/ Dim.	E (3)	ØF	ØI	H	J	L	M	X (4)	Y
min.	2.03	0.50	3.12	1	-	16.15	4.6	8.6	-
max.	2.13	0.65	3.32	3.2	23.5	16.85	5.4	8.8	7.0

NOTES

1. All dimensions are in mm.
2. Code 1D7N : Nut 4-40
Code 1D9N : Nut M3
3. Typical = 2.08
4. Typical = 8.70
5. This alternative design takes into account the different possible values of L.

DRAFT